

DATA SHEET

TOUCH 8 MAX

CONTROL PANEL FOR THE MAX CONNECT



The Touch 8 MAX is an 8-inch, PoE-powered touch panel designed specifically for the MAX Connect BYOM room solution. Using the touch panel, meeting participants can control room peripherals, as well as choose which content to display. Participants can also annotate on shared content and use the digital whiteboard — directly from the touch panel. PIR sensors conveniently turn the touch panel screen on automatically when a user approaches.

FEATURES

- 8-inch (203 mm) capacitive touch LCD interface
- Controls room AV peripherals and room display content
 - AV peripherals control and configuration
 - Content sharing moderation
 - Direct annotation on shared content and whiteboard
- Scratch-resistant glass
- Screen turns on automatically as someone approaches
- PoE powered (IEEE 802.3at Class 3, 15W) for simple, single CAT5e/CAT6 cable installation
- Covered by Biamp Systems' 5-year warranty

ARCHITECTS & ENGINEERS SPECIFICATIONS

The control panel shall include an 8-inch capacitive touch high-contrast LCD for function selection. The control panel shall connect to MAX Connect via an Ethernet connection using the local network. The control panel shall be made from PVC/ABS material with UV protection additive. The control panel shall be powered by PoE (IEEE 802.3at Class 3, 15W). The control panel shall be CE marked, UL listed, and compliant with the RoHS directive. Warranty shall be five years. The control panel shall be the Touch 8 MAX.

TOUCH 8 MAX SPECIFICATIONS

Display Type:	High-Contrast Capacitive Touch LCD	Overall Dimensions	
Display Size:	8" (203 mm) diagonal	Height:	5.1 inches (130 mm)
Display Resolution:	1280x800	Width:	7.7 inches (196 mm)
Maximum Display Brightness:	350 nits	Depth:	1.5 inches (38 mm)
Network Connection:	RJ-45 with Ethernet cable (Cat 5e and above)	Weight:	1.0 lb (0.45 kg)
Sensors:	Proximity	Environmental	
Power:	PoE (IEEE 802.3at Class 3, 15W)	Operating Temperature:	32-104° F (0-40° C)
		Relative Humidity:	10-90% (non-condensing)
		Altitude:	0-6,600 ft (0-2000m) MSL
		Compliance:	CE marked (Europe) RoHS Directive (Europe)

Biamp strives to improve its products on a continual basis. Specifications are therefore subject to change without notice.

TOUCH 8 MAX REAR PANEL



INCLUDED WITH THE SYSTEM:

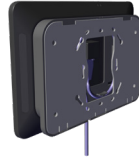
- RJ45 Cat cable 10 ft. (3 m.)

OPTIONAL ACCESSORIES:



Apprimo 8-WMA

Angled wall mount bracket
Mounting Type: To drywall or gang box



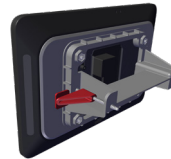
Apprimo 8-WMC

Concrete (surface) wall mount
Mounting Type: To a solid surface wall



Apprimo 8-WMF

Flat wall mount bracket
Mounting Type: To drywall or gang box



Apprimo 8-WML

Low profile wall mount bracket
Mounting Type: For drywall / sheet rock

Biamp, MAX Connect, Touch 8 MAX and Apprimo are either trademarks or registered trademarks of Biamp Systems, LLC in the United States and other countries. Other product names referenced may be trademarks or registered marks of their respective owners and Biamp Systems is not affiliated with or sponsored by these companies.