



Electro-Voice

EKX

PORTABLE Loudspeakers



SONICIMPACT

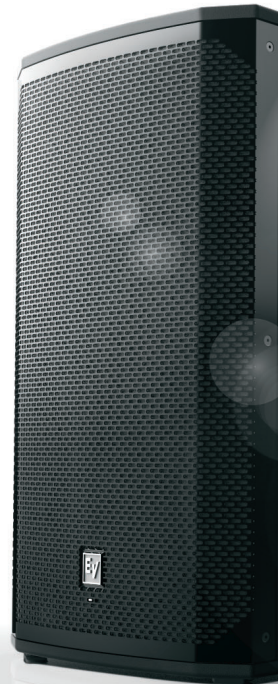
electrovoice.com/EKX

EKX

Electro-Voice **EKX Series** Portable Loudspeakers

The EKX series is the newest member of the Electro-Voice portable loudspeaker family, and combines legendary EV sound quality and reliability with the latest technology – all in a compact package suitable for a wide range of sound reinforcement scenarios, including musicians/DJs and live/club/installed sound applications. The EKX series features eight models (four powered and four passive), including 12" and 15" two-way models and 15" and 18" subwoofers.

EV-engineered components, Signal Synchronized Transducers™ (SST) waveguide design, and Class D amplifiers coupled with Quick**Smart**DSP all work together to provide precise coverage and superior sound quality. EV's award-winning industrial design – with robust wood enclosures and durable EVCoat finish – ensures that EKX speakers look as great as they sound.



EV Engineering and Innovation
Working Together for Maximum
Sonic Impact.



EKX

POWERED



SONICIMPACT

EKX POWERED Loudspeakers

Powered EKX models feature high-efficiency Class D power amplifiers (up to 1500 W) with integrated Quick**Smart**DSP, and deliver up to 134 dB peak SPL utilizing high-sensitivity transducers designed and engineered by EV (12" EVS-12M woofer/ 15" EVS-15M woofer, each coupled with a 1" DH-1M HF titanium compression driver; 15" EVS-15C subwoofer/ 18" EVS-18C subwoofer).

The EKX amplifier incorporates intelligent thermal management (with a variable-speed fan controlled by multiple onboard sensors) which ensures superior performance and reliability in demanding environmental conditions.

Powered models allow easy setup via four presets (Music, Live, Speech*, Club), sub/top system-match crossovers, three-band EQ*, five user-programmable presets (Store and Recall settings), visual monitoring of limiter status, input level control* and meters, and master volume control to ensure optimal gain structure.

Adapted from our touring systems, EV-exclusive Cardioid Control Technology allows output to be steered towards the audience with up to 35 dB reduction on stage when multiple subs are deployed.

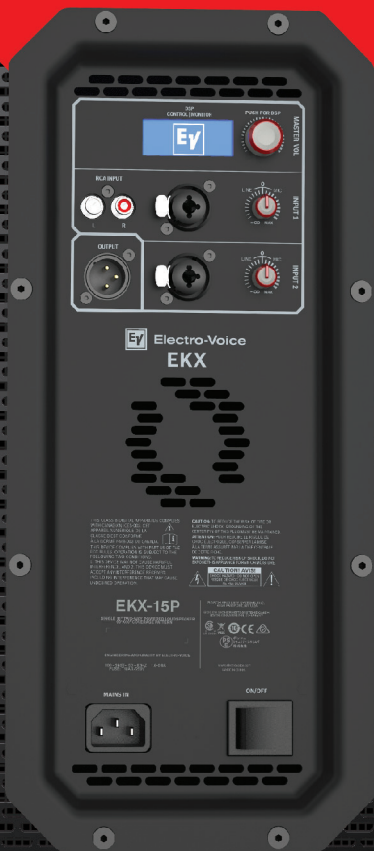
EKX powered models are ideal for portable and installed applications, with lightweight and compact 15-mm wood enclosures with internal bracing, durable EVCoat finish, eight M10 threaded mounting points (full-range only), aluminum pole-mounts, and all-metal handles.

*not available on subwoofers

Maximize the power of your performance with best-in-class features.

- Quick**SmartDSP** features best-in-class processing, EV's signature single-knob user interface, and intuitive menu navigation via LCD. Cardioid Control Technology feature for subwoofers allows output to be steered towards the audience with up to 35 dB reduction on stage when multiple subs are deployed.

- **High-efficiency Class D power amplifiers** (up to 1500 W) deliver up to 134 dB peak SPL via high-sensitivity transducers designed and engineered by EV.
- **Intelligent thermal management** with a variable-speed fan controlled by multiple onboard sensors, ensuring superior performance and reliability in demanding environmental conditions.





- **EV-patented Signal Synchronized Transducers™ (SST)** waveguide design on full-range models provides precise and consistent coverage.
- **Ideal for portable and installed applications.** Lightweight, compact 15-mm wood enclosures with internal bracing, durable EVCoat finish, eight M10 threaded mounting points (full-range models), aluminum pole mounts, and all-metal handles. Subs feature large slot ports for low distortion and excellent bass extension, and are equipped with a metal grille reinforcement bar.

12" AND 15" TWO-WAY POWERED LOUDSPEAKERS

Quick**Smart**DSP features best-in-class processing, EV's signature single-knob user interface, and intuitive menu navigation via LCD.

High-efficiency 1500 W Class D power amplifier delivers **up to 132 dB peak SPL on the EKX-12P** and **up to 134 dB peak SPL on the EKX-15P** via high-sensitivity transducers designed and engineered by EV.

Intelligent thermal management with a variable-speed fan controlled by multiple onboard sensors, ensuring superior performance and reliability in demanding environmental conditions.

EV-patented Signal Synchronized Transducers™ (SST) waveguide design provides precise and consistent coverage.

Lightweight, compact 15-mm wood enclosure with internal bracing, durable EVCoat finish, eight M10 threaded mounting points, aluminum pole mounts, and all-metal handles.

12
EKX-12P



15
EKX-15P



15" AND 18" POWERED SUBWOOFERS

Quick**Smart**DSP features best-in-class processing, EV's signature single-knob user interface, and intuitive menu navigation via LCD.

Cardioid Control Technology allows output to be steered towards the audience with up to 35 dB reduction on stage when multiple subs are deployed.

High-efficiency 1300 W Class D power amplifier delivers **up to 133 dB peak SPL on the EKX-15SP** and **up to 134 dB peak SPL on the EKX-18SP** utilizing high-sensitivity transducers designed and engineered by EV.

Intelligent thermal management with a variable-speed fan controlled by multiple onboard sensors, ensuring superior performance and reliability in demanding environmental conditions.

Two XLR outputs for easy system expansion to additional loudspeakers or subwoofers. Large slot ports for low distortion and excellent bass extension. Metal grille reinforcement bar (two on the 18SP). M20 threaded pole mount plate.

15^{SUB}
EKX-15SP



18^{SUB}
EKX-18SP



EKX

PASSIVE



SONICIMPACT

EKX **PASSIVE** Loudspeakers

Passive EKX models deliver up to 134 dB peak SPL utilizing high-sensitivity transducers designed and engineered by EV (12" EVS-12M woofer/15" EVS-15M woofer, each coupled with a 1" DH-1M HF titanium compression driver; 15" EVS-15C subwoofer/18" EVS-18C subwoofer).

EKX passive models are ideal for portable and installed applications, with lightweight and compact 15-mm wood enclosures with internal bracing, durable EVCoat finish, eight M10 threaded mounting points (full-range only), aluminum pole mounts, and all-metal handles.

12" AND 15" TWO-WAY PASSIVE LOUDSPEAKERS

EKX-12: 1400 W (peak), **131 dB peak SPL** utilizing high-sensitivity transducers designed and engineered by EV.

EKX-15: 1600 W (peak), **132 dB peak SPL** utilizing high-sensitivity transducers designed and engineered by EV.

EV-patented Signal Synchronized Transducers™ (SST) waveguide design provides precise and consistent coverage.

Lightweight, compact 15-mm wood enclosure with internal bracing, and durable EVCoat finish.

Eight M10 threaded mounting points, aluminum pole mounts, and all-metal handles.

90° x 60° pattern for best coverage on mid-size stages.
40° monitor angle with rubber feet.

12
EKX-12



15
EKX-15



15" AND 18" PASSIVE SUBWOOFERS

1600 W (peak), **133 dB peak SPL on the EKX-15S** and **134 dB peak SPL on the EKX-18S** utilizing high-sensitivity transducers designed and engineered by EV.

Lightweight, compact 15-mm wood enclosure with internal bracing, and durable EVCoat finish.

Large slot ports for low distortion and excellent bass extension.

Metal grille reinforcement bar (two bars on the EKX-18S).

M20 threaded pole mount plate.

15^{SUB}
EKX-15S



18^{SUB}
EKX-18S



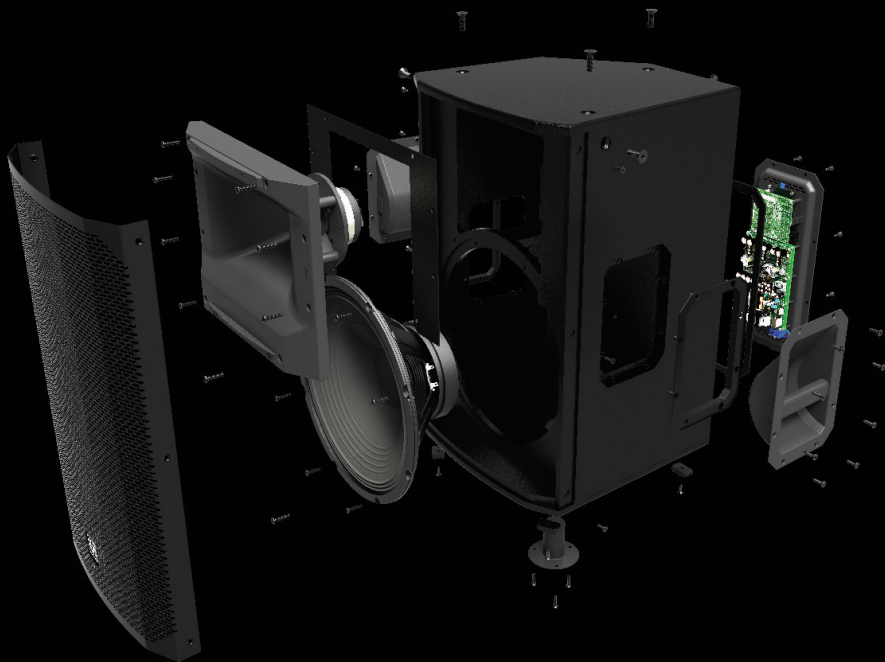
EKX

Make a sonic impact when you
take the stage with **EKX POWERED** and
PASSIVE Loudspeakers.

electrovoice.com/EKX







Headquarters Americas:
Bosch Security Systems, Inc.
12000 Portland Ave South | Burnsville, MN 55337 | USA
Ph: 1 800 289 0096 | Fax: 1 800 955 6831
buv.orders@us.bosch.com