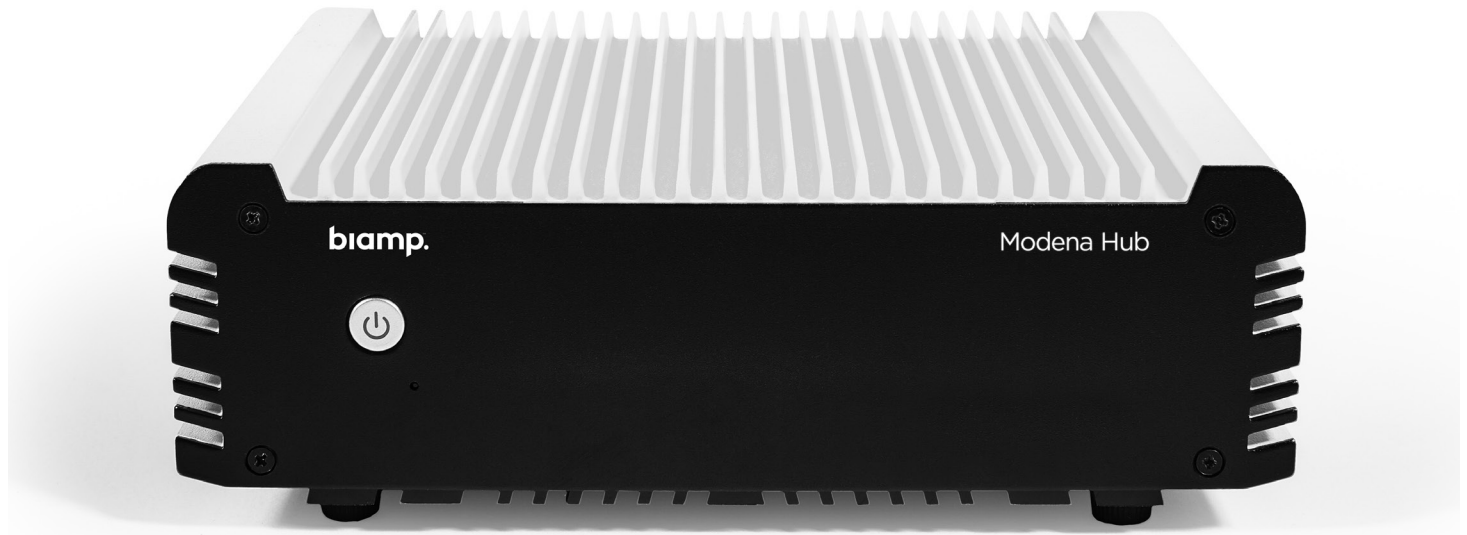


# DATA SHEET

## MODENA™ HUB

### WIRELESS PRESENTATION HUB



Modena™ Hub is a wireless presentation hub that supports the new ways in which people are increasingly accustomed to working. Ideal for BYOD and BYOC spaces, Modena Hub allows participants to connect to meeting room AV equipment and USB accessories wirelessly, as well as enabling any participant to wirelessly receive its AV streams during a video conferencing session. Modena Hub supports most UC software and hardware devices, while enabling the user to wirelessly share content with other meeting participants. Modena Hub also connects to AV peripherals via USB and HDMI, and can support multiple USB devices via a standard USB hub or by connecting a Devio® SCR-20 or SCR-25.

#### FEATURES

- Enjoy a client-free experience with your web browser
- Meet everywhere: with Modena Hub, any place is a meeting room
- Enable a display to receive content by connecting a computer running the web or software client, or an Android dongle; or run the Android TV app directly on a smart TV
- All personal devices can send and receive presentations directly to the screen of participants' laptops, tablets, or mobile devices
- Configure Modena Hub for large teaching spaces and give everyone a perfect view using Auditorium mode, for up to 150 users
- IT administrators have quick access to the configuration of all units installed in an enterprise via a powerful management web interface
- Covered by Biamp Systems' two-year warranty

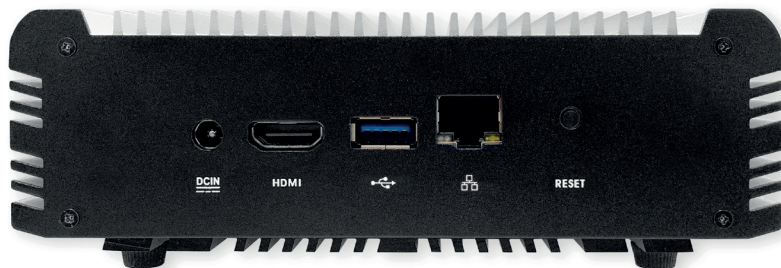
## ARCHITECTS & ENGINEERS SPECIFICATIONS

The wireless presentation hub shall be designed to connect web-based soft codec conferencing systems with in-room audio and video devices. It shall also allow multiple session participants to directly receive content from in-room audio/video devices on their compatible computing devices via the use of custom USB drivers. The wireless presentation hub shall connect to AV peripherals via a Universal Serial Bus (USB) connection using a standard USB 3.0 A-type connector. The wireless presentation hub shall be equipped with one High-Definition Multimedia Interface (HDMI) port on the rear panel. The wireless presentation hub shall connect to an Ethernet network via an RJ-45 connector to allow participants using client devices to join a shared session. The client devices shall operate using Windows, Mac OS X, iOS or Android operating systems and shall have installed the Modena Hub custom drivers and client software. The wireless presentation hub shall be CE marked, UL listed, and compliant with the RoHS directive. Warranty shall be 2 years. The wireless presentation hub shall be the Modena™ Hub.

## MODENA HUB SPECIFICATIONS

<b>Wireless presentation resolution:</b>	Up to HD 1080p@30fps	<b>Environmental</b> <b>Ambient Operating Temperature Range:</b> 32 - 104° F (0 - 40° C) <b>Ambient Storage Temperature Range:</b> -4 - 140° F (-20 - 60° C) <b>Humidity:</b> 0-95% relative humidity (non-condensing) <b>Altitude:</b> 0-6,600 ft (0-2000m) MSL
<b>Wireless webcam feed resolution:</b>	Up to HD 720p@30fps	
<b>Wired network connection:</b>	Ethernet RJ-45 port, 1000 Mbit/s	
<b>USB port:</b>	USB 2.0/3.0	
<b>Media port:</b>	HDMI	
<b>Power:</b>	External power adaptor 12V DC	
<b>CPU:</b>	Intel® i5 equivalent or faster	
<b>Web browser:</b>	Chrome™, Firefox™, Edge™	
<b>Windows® (presenter/viewer):</b>	Windows 10 .NET® Framework 4.5; Microsoft® Direct3D	
<b>Mac OSX® (presenter/viewer):</b>	Mac OSX 10.11 or higher	
<b>Android®:</b>	Android 8 or higher	
<b>iOS®:</b>	iOS 11 or higher	
<b>Overall Dimensions</b>		<b>Wireless Requirements:</b> <b>Wireless Connection:</b> 2.4Ghz 802.11n compatible Wifi interface 5Ghz 802.11ac compatible Wifi interface (recommended) Minimum distance between device(s) and access point: ~ 3 feet (~ 1 meter)
<b>Height:</b>	2 inches (51 mm)	
<b>Width:</b>	6.3 inches (160 mm)	
<b>Depth:</b>	5.2 inches (132 mm)	
<b>Weight:</b>	2.4 lbs (1.1 kg)	
		<b>Signal Strength:</b> RSSI on connected devices: stable above -65dBm (recommended > - 60dBm) SNR (RSSI - Noise) on connected devices: stable above 25dB (recommended > 35dB)
		<b>Minimum Bandwidth:</b> 4 Mbps average / 15 Mbps peak per connected client (upstream when presenting; downstream when receiving) Additional 4 Mbps average / 15 Mbps peak for the videoconference host when using the Wireless USB feature

## MODENA HUB REAR PANEL



Biamp, Devio, and Modena are either trademarks or registered trademarks of Biamp Systems, LLC in the United States and other countries. HDMI, HDMI High-Definition Multimedia Interface, and the HDMI logo are either trademarks or registered trademarks of HDMI Licensing LLC in the United States and other countries. Other product names referenced may be trademarks or registered marks of their respective owners and Biamp Systems is not affiliated with or sponsored by these companies.