



**RSL-6**

Installation Guide v3.0

**Cloud Electronics Limited**

140 Staniforth Road, Sheffield, S9 3HF England

Tel +44 (0) 114 244 7051

Fax +44 (0) 114 242 5462

E-mail [info@cloud.co.uk](mailto:info@cloud.co.uk)

Web site <http://www.cloud.co.uk>

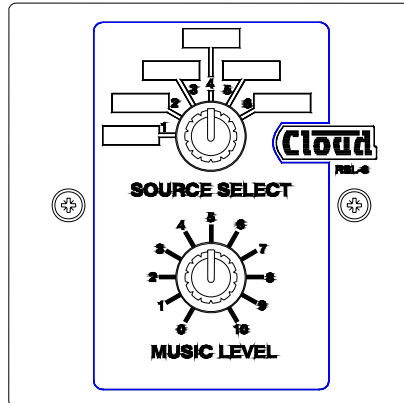


# RSL-6 Installation Guide

## 1 Introduction

The Remote Source and Level control module for 6 input mixers (RSL-6) can be wired to a wide range of Cloud products. This document will provide you with a wiring diagram to connect the RSL-6 to your host unit connector and detail any switches or jumpers that may need to be reconfigured to integrate the module with the host unit. The RSL-6 remote level control is compatible with the following units: 46/50, 36/50, Z4II, Z8II, CX462 and CX263

## 2 Hardware and Wiring Requirements



The Cloud RSL-6 remote control plate is the same physical size as a single UK electrical light switch and can be mounted in a standard 25mm deep housing. The RSL-6 should be connected to the remote connector of the host mixer using 2-Core cable with an overall screen. The RSL-6 terminations are conventional screw terminals while the remote connector on the host unit is a 3-Pin plug-in screw terminal type connector (connector is supplied with the mixer). **Note:** Maximum recommended cable length is 100m (328ft).

## 3 RSL-6A

The RSL-6A is available for the American market. This has identical operation to the RSL-6 but has been designed to fit a single gang US electrical outlet box. Front panel dimensions are 4.51"× 2.76"

## 4 Specific Product Information

Some Cloud products have external switches and internal jumpers that may require reconfiguring for an RSL-6 to work, this list contains the jumper settings, location and function for relevant products. Please take some time to read the applicable information here as these settings can be critical to the operation of the RSL. The wiring diagram can be found in section 5 of this document.

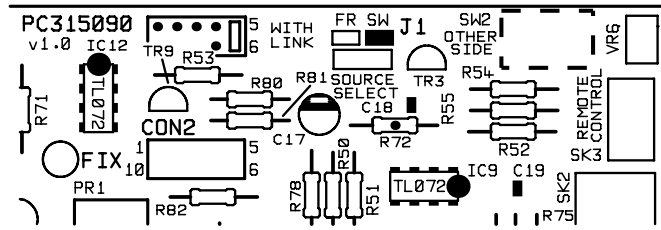
### 4a Z4 & Z8

Schematic can be found at the rear of this document.

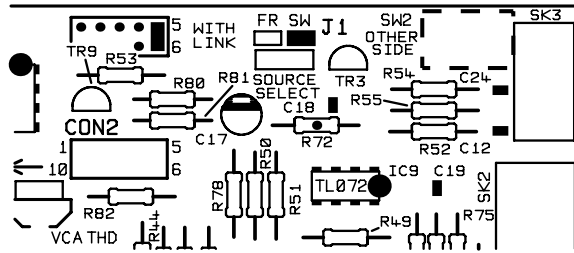
#### Jumper and Switch Settings to Integrate an RSL-6

On any zone where an RSL-6 is to be used, the rear panel 'music control' switch should be depressed. If the RSL-6 fails to change the music sources, check the jumper J1 which should be set to the 'SW' position.

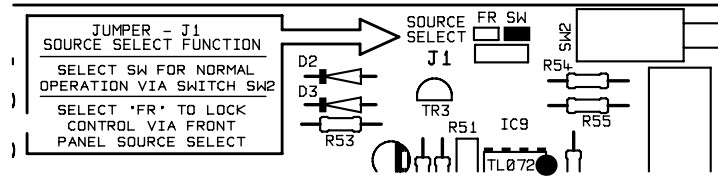
**J1 location on Z4II & Z8II Zone Board**



**J1 location on Z4 & Z8 (Old Model) Standard Zone Board**



**J1 location on Z4 & Z8 (Old Model) Enhanced Zone Board (w/facility)**



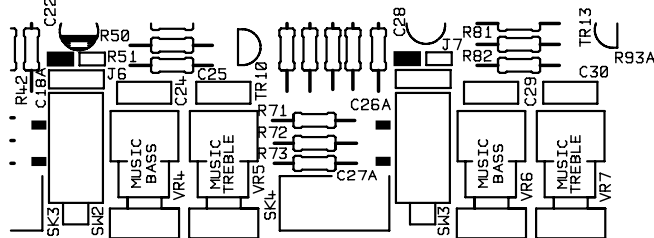
**4b 36/50**

Schematic can be found at the rear of this document.

**Jumper and Switch Settings to Integrate an RSL-6 to a Specific Zone**

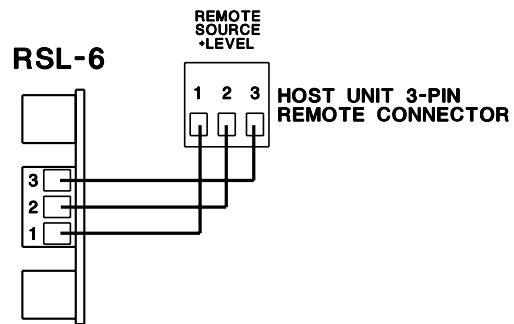
**Zone 1:** To use an RSL-6 depress the 'music control' switch. If the RSL-6 fails to change the music sources, check the jumper J6 which should be set to the 'SW' position.

**Zone 2:** To use an RSL-6 depress the 'music control' switch. If the RSL-6 fails to change the music sources, check the jumper J7 which should be set to the 'SW' position.



**Jumper locations on the 36/50 PCB**

## 5 Schematic for Wiring the RSL-6



**IMPORTANT:** If you need a single RSL panel to operate more than one Zone simultaneously it will need modification. Contact our technical department for further details.

Should you have any further questions please do not hesitate to contact our technical support staff (contact details on front cover)