

TIGER TOUCH II



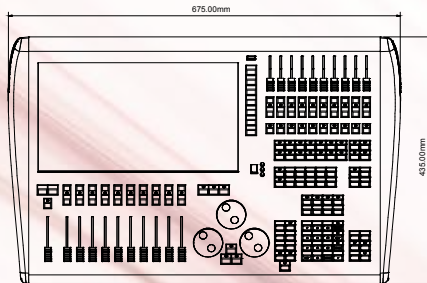
POWERED BY
titan

Expandable with Tiger Touch Fader Wing

The Most Specified Titan Console

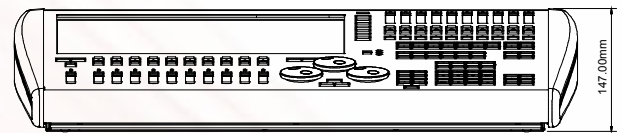
Now featuring a clear, 100% brighter touch screen, more powerful processor, and faster graphics engine, the Tiger Touch II is the most specified Titan console.

- Live 'hands on' and Cue List control
- 100% brighter, vibrant 15.6" touch screen
- 4 Physical DMX, up to 16 over ArtNet or streaming ACN – 8192 channels
- Supports Titan Network Processors for DMX expansion up to 64 universes



Top

- 20 submasters for Cues, Cue Lists and sequences
- Show file compatibility with Titan console range
- 10 direct Macro buttons and Macro library
- Support of ArtNet, CIP and streaming ACN
- Expandable Fixture library for over 14,000 devices
- Powerful processor, faster graphics, SSD drives and UPS fitted
- Conveniently located front panel mounted USB
- Direct SMPTE in
- Trigger input
- Compatible with Titan Remote (Wi-Fi access point required)
- 30kg in flight case

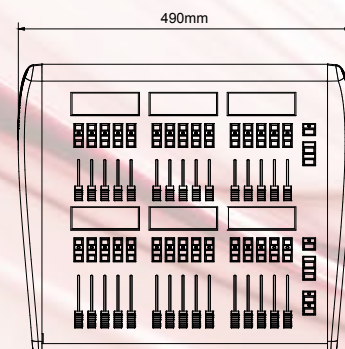


Front

Tiger Touch Fader Wing

Expand your control surface with 30 additional faders for instant access to all of your playbacks, fixtures and palettes. Programmable macro buttons and independent paging control make for intuitive operation of world-class shows. Each fader has an electronic legend on a back lit LCD.

- 30 precision playback faders
- Each fader electronically labelled with an LCD screen
- Independent paging control for each row of 15 faders
- 60 user configurable flash or solo buttons
- 2 programmable macro buttons
- Independent pages for each row of faders
- Also compatible with Expert Pro, Sapphire Touch and Arena



Top



Front

Side

TITAN FEATURES

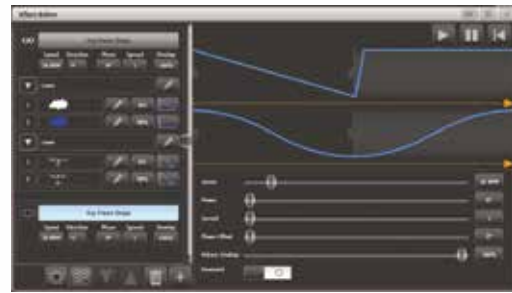
Key Frame Shapes

Introducing the amazing Key Frame Shapes, providing the capability to create spectacular effects from scratch. Using palettes or the programmer to define the frames, and powerful tools such as transition curves, phase and spatial direction, it is possible to create radically different looks for each channel in seconds. Synchronise these together for dramatic impact. Integrate Pixel Mapper effects with Key Frames using one simple interface.

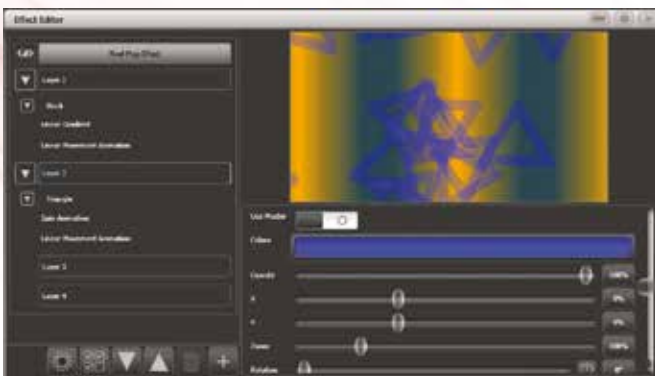
Multi User Networking

Connect multiple consoles together to work collaboratively or independently on the same show. A show can have multiple users, each with their own User Settings, Handle Worlds and Selected Key Profiles. With Multi User, consoles can still be used as backups.

Backstage techs can exchange, reset or fault find on fixtures, or even patch in floor packages, without interrupting programming. Palettes made or edited on one console automatically update to other connected consoles.



Networking of the outputs using the TNP increases system capabilities to up to 64 DMX universes, catering for even the largest world class spectacles. All of this can be used in conjunction with Titan Remote!



Unmatched Pixel Mapping Capabilities

The industry's best pixel mapper allows complex multi-layer effects made in record time, across all fixture groups, as if they were one entity. Create and animate pre-programmed or custom content using Avolites' unique Quicksketch tool and image import. Use Gradient Fill to create smooth, soft edge transitions and exciting layered effects, now even quicker using cross-layer copy and move functions.



Align

Effortlessly copy values across fixtures, either in a recurring pattern or a smooth fade.

V10



Pixel Mapper with Motion Blur

Avolites' industry-leading pixel mapper gets even more powerful with the new motion blur effect in Titan V10, allowing for even more creative possibilities.

V10



3D Visualiser

Titan features a new full 3D visualiser powered by the Capture engine. Create and edit your show right inside the Titan interface. Lay out your fixtures in the space using your console's encoder wheels.

Offset

Set an offset for any attribute of any fixture to fix common issues such as incorrectly rigged fixtures.

Flexible Colour Mixing: Up to Seven Channels



Get maximum punch and more accurate colours from your LED fixtures, thanks to new, four-channel pixel mapping and colour mixing.



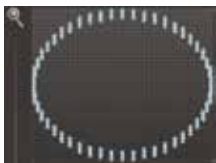
Titan Remote

For fast fixture focusing or letting someone else update palettes while you update show data. Program edit or play back cues lists or sequences.



Quicksketch

Quicksketch icons are fast to find during show time. Create custom icons instantly with Avolites' unique Quicksketch drawing tool.



Group Layout Auto-Arrange

New tools for quickly arranging fixtures in rectangular, circular and triangular layouts, when moving all fixtures or a selection.



Audio Triggering

Trigger show content using seven-band audio triggering. (Quartz & Arena only).



Global Palettes

Global palettes are importable between shows, and allow users to apply information universally to all fixtures.



Nested Palettes

Create palettes which reference information from another palette. When the originals are updated, they will also update the nested palette.



Show Library

Quickly access and organise all of your show data from one central location including; fixtures, palettes and playbacks.

Powerful Cue Lists

Expansions to Titan's tracking now make it possible to track changes forwards and backwards. Cue lists now offer cue-only changes, and you can filter data in cue view to show only relevant information. Move-in-Dark makes for effortless moving light programming. MIDI Show Control allows the show to be run by the stage manager using Q-lab.

Undo V10

Massively speed up programming with comprehensive Undo functionality. Undo almost any action on the console including; delete, merge, move and loads more. View history in the new undo window, and click any point to undo back to that action.

V10



Freeform Workspaces

No longer restricted to just 4 workspaces per screen, pick any position and size for your windows in seconds and store them to your workspaces for quick access to the information you need.



Group Intensity Masters

Fast control of entire groups of fixtures. Balance group intensities for TV or film or increase all Beam lights and reduce all washes on your live production.



Show Import

Quickly create new shows from the best parts of your past productions.



Set List

Cue pages can now follow the shows running order – no matter how late you are given the set list. Display helpful notes like songs, follow spot colours or operator cues.



Exchange Mapping

Fixture exchange is revolutionised with a unique visual, Attribute Mapping System. Customise any fixture exchange to fit your needs; for example, old Gobo 1 to new Gobo 3.



Keystone and Blade control

Control Keystone or Blades with intuitive graphical workspace.

V10



Channel Intensity Grid

See all your intensity values in one place with V10's Intensity Grid. This clearly shows levels, source of information, whether increasing or decreasing and tracking information.



Clip Select

Video Media Integration with instant multilayer patching and Video Clip Selection by image preview. For servers supporting CIPF.

Show Reports

Create a cue list hard copy for the director or arrive at the venue with your rig pre-patched by sending in advance your fixture patch to the venue crew.