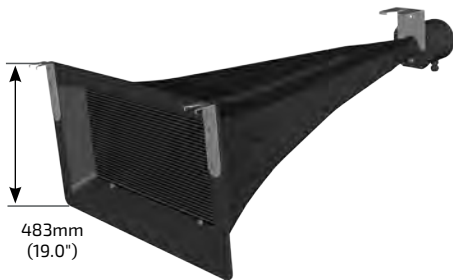


T SERIES

TT-1020

TUNNEL EMERGENCY NOTIFICATION
40° x 30° SINGLE DRIVER LOUDSPEAKER


DESCRIPTION

The TT-1020 is designed to provide consistent intelligible emergency notification for enclosed linear spaces and other long projection applications. Precise pattern control and very narrow coverage angles deliver outstanding performance in highly reverberant environments.

To meet the performance goals for long projection emergency notification, the system utilizes a single high power purpose-built MF transducer, ensuring accurate signal reproduction and very low distortion. Community's proprietary 2" (51 mm) exit compression driver delivers high intelligibility at elevated sound pressure levels necessary to overcome the high ambient noise and reflected acoustic conditions. This makes it ideal for road or rolling stock tunnels and similar acoustically challenging environments. The large-format waveguide ensures precision directivity control throughout the entire voice band.

Both the driver's inert materials composition and horn's fiberglass construction make the entire device resistant to potentially caustic tunnel-type environments. All external hardware and mounting brackets are 316 stainless steel.

FEATURES

- Intelligibility at very high output levels
- Consistent controlled directivity and low distortion
- High efficiency and high power capacity
- Highly resistant to harsh environments

TECHNICAL SPECIFICATIONS

Operating Mode	100V	
Operating Environment	All conditions, suitable for continuous outdoor direct exposure and harsh environments	
Operating Range	300 Hz to 9 kHz	
Operating Temperature[†]	-5°C – 55°C [23°F – 131°F]	
Nominal Beamwidth (H x V)	40° x 30° (1000 Hz to 8000 Hz)	
Transducers	1 x 2" (51mm) exit compression, non-metallic diaphragm, FerroFluid-cooled driver	
Transformer Taps	100V 50W, 100W (<i>Tap designation is factory-configured per order</i>)	
Nominal Sensitivity[†]	1W/1m * 114 dB	1W/4m ** 102 dB
Nominal Maximum SPL[†]	Continuous @1m * 134 dB	Continuous @4m ** 122 dB
Equalized Sensitivity	1W/1m * 113dB	1W/4m ** 101 dB
Equalized Maximum SPL	Continuous @1m * 133 dB	Continuous @4m ** 121 dB
Required Accessories	Digital Signal Processor; High Pass Filter	

PHYSICAL

Input Connection	IP67 4-conductor (Hirschmann CA Series 4-pole)
Mounting Points	Three (3)
Environmental	IP66 per IEC 60529 IEC 60695-11-10:2013 V0
Dimensions H x W x D	483 x 877 x 1362 mm (19.0" x 34.5" x 53.6")
Weight	53 lbs (24 kg) loudspeaker with mounting brackets
Grille	Powder-coated perforated 316 stainless steel backed with hydrophobic (treated) acoustic fabric
Finish	Hand-laminated multilayer fiberglass with black gelcoat on exterior surfaces (1 exterior, 2 interior)
Included Accessories	Mounting brackets (2 front & 1 rear)

OPTIONS

Configure-to-Order (CTO)	Custom color, specialized wiring
---------------------------------	----------------------------------

[†] Full output not available at lowest temperature -5°C (until applied current warms driver materials)

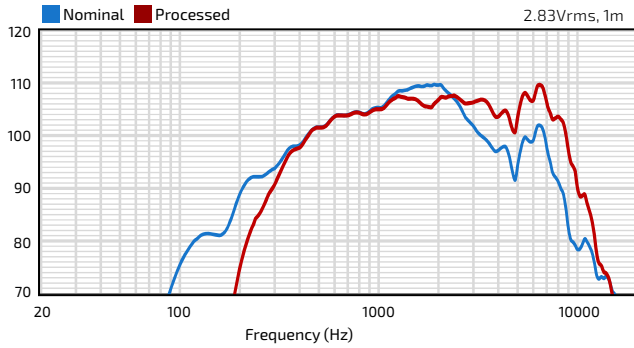
* Measured far-field, adjusted to 10V into 100 Ohms at 1m. Signal: IEC60268-1

** Measured far-field, adjusted to 10V into 100 Ohms at 4m. Signal: IEC60268-1

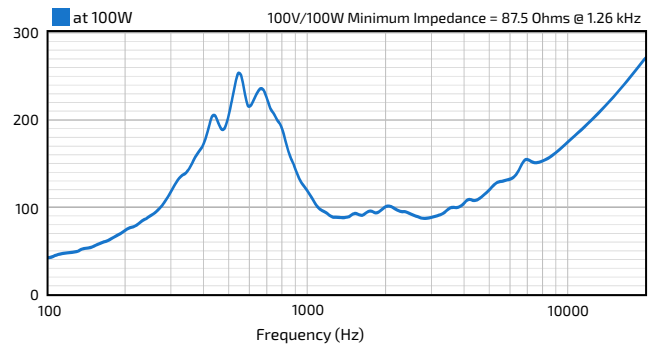
T SERIES

TT-1020 TUNNEL EMERGENCY NOTIFICATION 40° x 30° SINGLE DRIVER LOUDSPEAKER

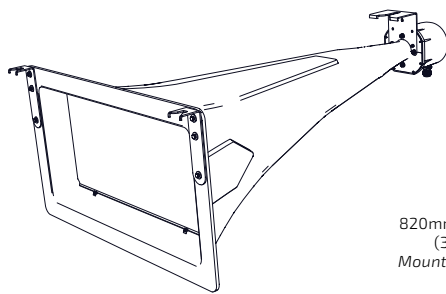
FREQUENCY RESPONSE (dB)



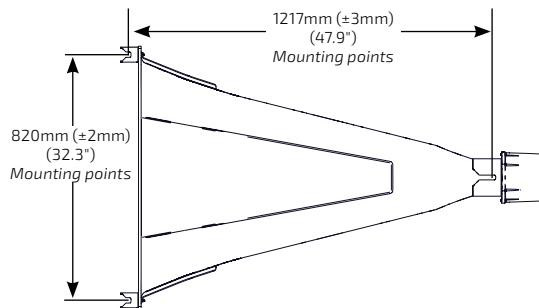
IMPEDANCE (Ohms)



TECHNICAL DRAWING / DIMENSIONS / FINISH



Isometric



Top

H x W x D

483 x 877 x 1362 mm
(19.0" x 34.5" x 53.6")

Unit Weight

53 lbs (24 kg) loudspeaker and mounting brackets

Shipping Weight

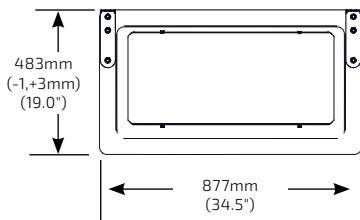
158 lbs (71.7 kg) Shipped in pairs

Enclosure / Finish

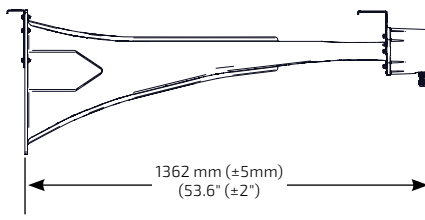
Loudspeaker: Hand-laminated multilayer fiberglass with black gelcoat on exterior surfaces

Grille

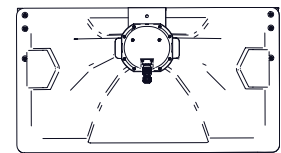
Powder-coated perforated 316 stainless steel backed with hydrophobic (treated) acoustic fabric



Front



Sides



Rear

*Note: Tunnel horn is shown with the mounting brackets.
Overall horn width and height may vary slightly due to fiberglass application thickness.*