



www.auvitran.com

Table of contents

1. Legacy.....	3
1.1 LIMITATION OF LIABILITY	3
1.2 TRADEMARKS	3
1.3 COPYRIGHT.....	3
1.4 MORE INFORMATION.....	3
2 AV-WALL Quick Start.....	4
2.1 Power to Start-up.....	4
2.2 Connect the AV-WALL to an IP/Dante network.....	4
2.3 AV-WALL's Dante settings.....	5
2.4 Access to AV-WALL's User Interface via AVSMonitor on Windows OS.....	6
3 AV-WALL's setting using rotative push-button functions	7
3.1 Display mode	7
3.2 Control mode.....	8
3.2.1 Change the gain	8
3.2.2 Pairing BlueTooth	9
3.2.3 Phantom 48v power supply.....	9
3.3 Dimmer mode	9
4 AV-WALL control using AVS-Monitor.....	10
4.1 "General" menu.....	10
4.2 "Properties" menu	11
4.3 "GUI" menu	12
4.4 "IN" Interface	13
4.5 "Mixers" Interface	14

1. Legacy

1.1 LIMITATION OF LIABILITY

In no case and in no way, the provider of this software (AuviTran, the distributor or reseller, or any other party acting as provider) shall be liable and sued to court for damage, either direct or indirect, caused to the user of the software and which would result from an improper installation or misuse of the software. "Misuse" and "improper installation" mean installation and use not corresponding to the instructions of this manual.

AuviTran is constantly working on the improvement of the products. For that purpose, the products functionalities are bound to change and be upgraded without notice. Please read carefully the User's manual as the new functionalities will be described therein.

1.2 TRADEMARKS

All trademarks listed in this manual are the exclusive property of their respective owners. They are respected "as is" by AuviTran. Any use of these trademarks must receive prior approval of their respective owners. For any question, please contact the trademark's owner directly.

1.3 COPYRIGHT

The information in this manual is protected by copyright. Therefore, reproduction, distribution of whole or part of this manual is strictly forbidden without the prior written agreement of AuviTran.

1.4 MORE INFORMATION

Please visit our website for any question of further inquiry concerning our product range. Updates will also be posted when available.

<http://www.auvitran.com>

2 AV-WALL Quick Start

2.1 Power to Start-up

To start your AV-WALL, connect the RJ45 port to an active POE device using a CAT5E/6 cable (100Mb/s connection).



When powered, the 6 White led lights on the AV-WALL's front face will flash and then the lights will flash alternatively until the device is switched on.

2.2 Connect the AV-WALL to an IP/Dante network

The connection of your AV-WALL to the IP/Dante network is done via the same Ethernet CAT5e/6/7 cable used for the power supply.

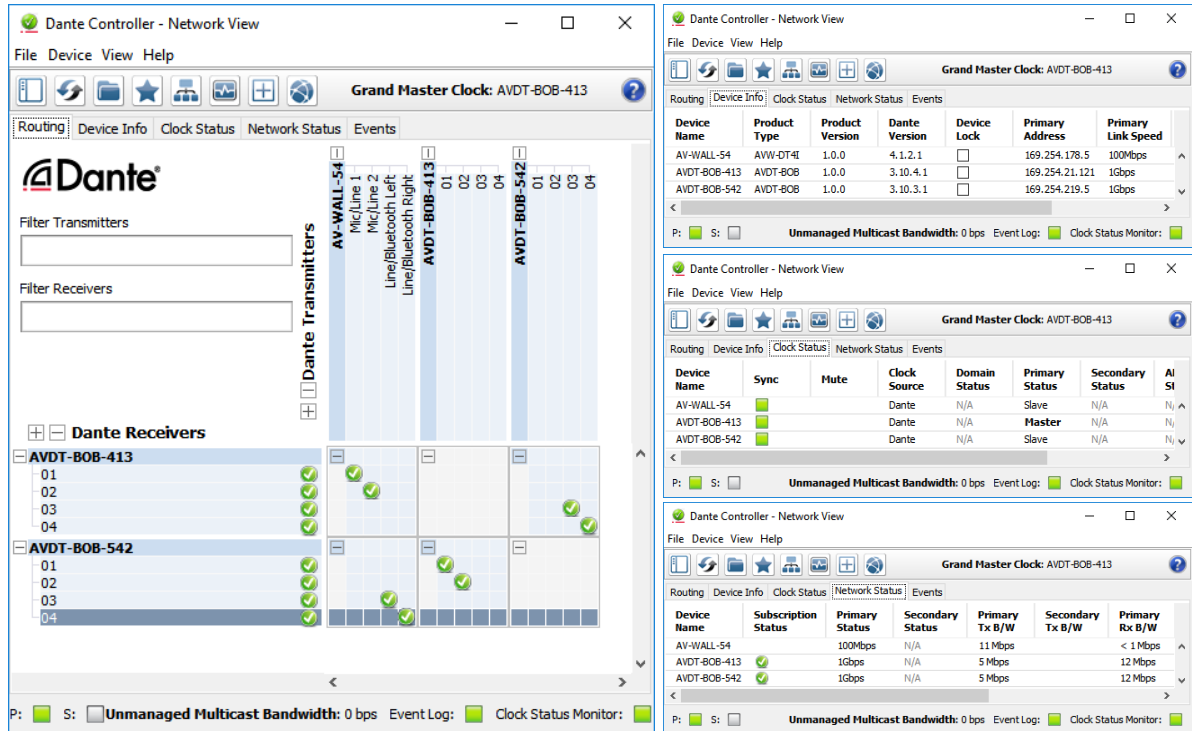
AV-WALL has a unique IP network addresses and a unique name to control Dante and AV-WALL settings:

1. The IP address is preset by default at factory to be set automatically using a DHCP server or using APIPA address (169.254.xxx.xxx/16) if no DHCP server is detected by the device. The IP address can be fixed using the Dante controller
2. The AV-WALL name is preset at factory at "**AV-WALL-#**" where # is its serial number. The Dante name of an AV-WALL can be changed by the Dante Controller.
 - ⇒ AV-WALL serial number 145 has Dante name "**AV-WALL-145**" as factory preset
3. The AV-WALL setting can be done locally via the front face rotative button of the AV-WALL or via AVSMonitor (Software downloadable on www.auvitran.com)

2.3 AV-WALL's Dante settings

The AV-WALL Dante settings are done via the standard Audinate Dante Controller.

1. Download Dante Controller on the Audinate web site at the following web address <https://www.audinate.com/products/software/dante-controller>
2. Install Dante Controller by double clicking on the download file.
3. Start Dante Controller to detect your AV-WALL Dante devices and control settings

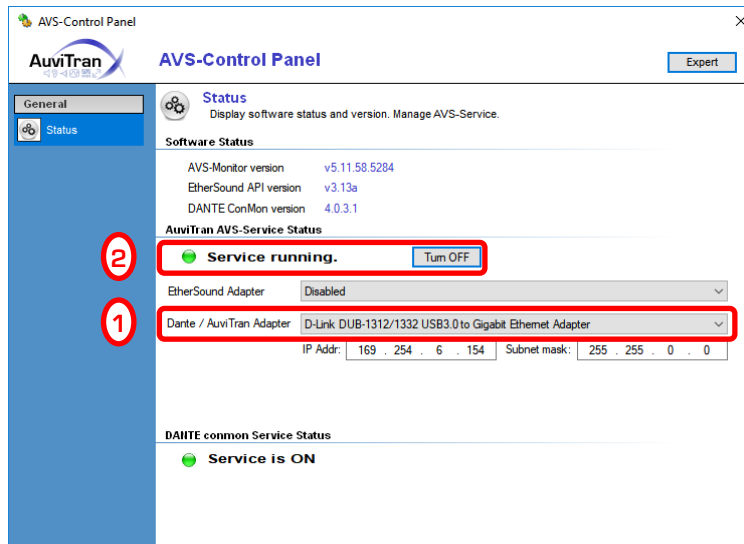


4. To change AV-WALL name, Double click on the device label
5. Select "**Device Config**" tab in the new windows and modify the "**Rename Device**" field

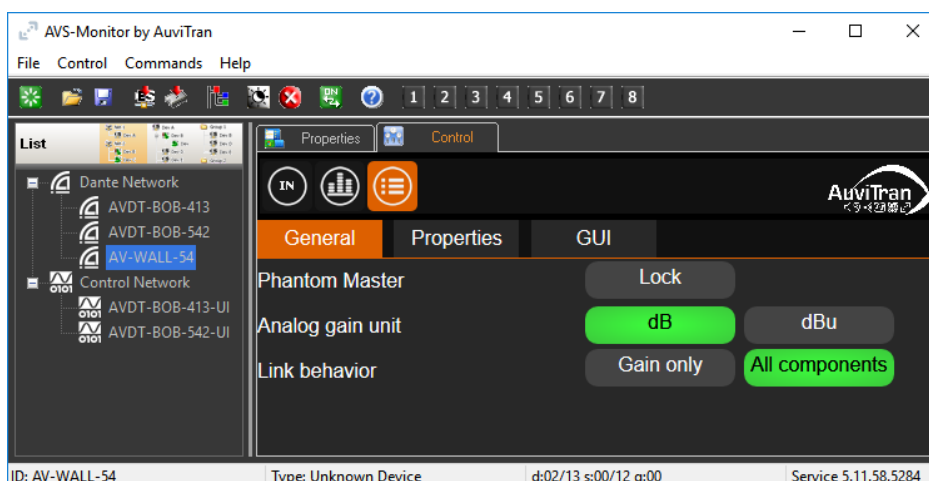
2.4 Access to AV-WALL's User Interface via AVSMonitor on Windows OS

The AV-WALL's User Interface can be accessed using AVSMonitor on Windows OS:

1. Download AuvitrAn AVS-Monitor free software for windows 7/8/10 available at the following web address <https://www.auvitran.com/software>
2. Install AVS-Monitor by double clicking on the download file.
3. Using AVS-Control Panel
 - 3.1. Select the NIC card that must be used by Dante /AuvitrAn Adapter
 - 3.2. Run the service



4. Start AVS-Monitor
 - 4.1. The AV-WALL connected to the network will automatically appears in the “Dante Network”
 - 4.2. Select the AV-WALL in the left list called “Dante network” and” “Control” Tab in the right windows as describe bellow



- 4.3. See chapter 4 for interface description

Notice:

- If your device doesn't appear, your network configuration is probably not good. Return to AVS-Control-Panel using “Edit/Control panel” menu or pressing Ctrl+P and reselect another network or check if your PC is in the same network that the AV-WALL

3 AV-WALL's setting using rotative push-button functions

The AV-WALL has 3 modes of operation sequences:

- The "Display" mode
- The "Control" mode
- The "Dimmer" mode

3.1 Display mode

The Display mode is active:

- after the end of start process when switching-on the AV-WALL
- after 10 seconds without using the push-button when in control mode
- after finishing scrolling the last menu in Control mode

The Display mode shows the status of the AV-WALL:

LED	Mode	Status
Gain	Switched off	
1, 2 or 3	Switched off	No audio signal
	Switched on	Audio signal is present
	Flashing	Audio signal is saturated
BlueTooth	Switched off	BT device not paired or not connected, or no BT-EXT connected
	Switched on	BT device paired or connected
	Flashing	BT device waiting for pairing
48v 1 and 2	Switched off	The Phantom power supply is cut off
	Switched on	The Phantom power supply is turned on

3.2 Control mode

The Control mode is activated by pressing the push-button briefly. The parameter we are acting on is flashing. Another brief press will pass to the next parameter and the next LED will flash. When arriving to the last parameter (Phantom 48v #2) the next brief press will activate the Display mode.

The Control mode permits to act on the AV-WALL:

- Change the gain
- Activate/pair a BlueTooth device
- Turn on/off the Phantom power supply

3.2.1 Change the gain

LED Actives	Stream changed	Action on the button	Action
Gain On + 1 blinking	Mic/Line 1 (XLR)	Turn left	Decrease the gain
		Turn right	Increase the gain
		Push	Go to "Mic/line 2" gain control
Gain On + 2 blinking	Mic/Line 2 (XLR)	Turn left	Decrease the gain
		Turn right	Increase the gain
		Push	Go to "Line 3 L/R" gain control
Gain On + 3 blinking	Line 3 L/R (Mini jack or Bluetooth)	Turn left	Decrease the gain
		Turn right	Increase the gain
		Push	Go to "Pairing Bluetooth" control

Notices:

- The gain LED is On when acting on the gain.
- The stream's LED we are acting on is blinking.
- The level of the gain is represented by the other LEDs (the more LEDs are on, the higher is the gain).

3.2.2 Pairing BlueTooth

If no BlueTooth extension is connected to the AV-WALL, this light is always turned off and the push button will go directly to 48v Phantom power control

When a BlueTooth extension is connected and Bluetooth led is blinking, the following actions can be done:

- Turning right, the LED is blinking quickly => the discovery mode is turned **On**
- Turning left, the LED is blinking slowly => the discovery mode is turned **Off**
- Pressing button more than 5 seconds => all connections to the BlueTooth device are shut down
- Pressing button for less than 5s => Go to 48v Phantom power control

3.2.3 Phantom 48v power supply

The LED 48v #1 or #2 is blinking when the rotative/push button is controlling the 48V phantom power of Mic 1 or respectively of Mic 2:

- Turning right, the LED is blinking quickly => the 48v phantom power is On
- Turning left, the LED is blinking slowly => the 48v phantom power is Off
- Pressing the button => deactivate the rotative/push button

For activating the power supply, turn right the button: the LED is blinking quickly.

For turning off the power supply, turn left the button: the LED is blinking slowly.

3.3 Dimmer mode

The Dimmer mode is activated by pressing the push-button for at least 5s when in Display mode.

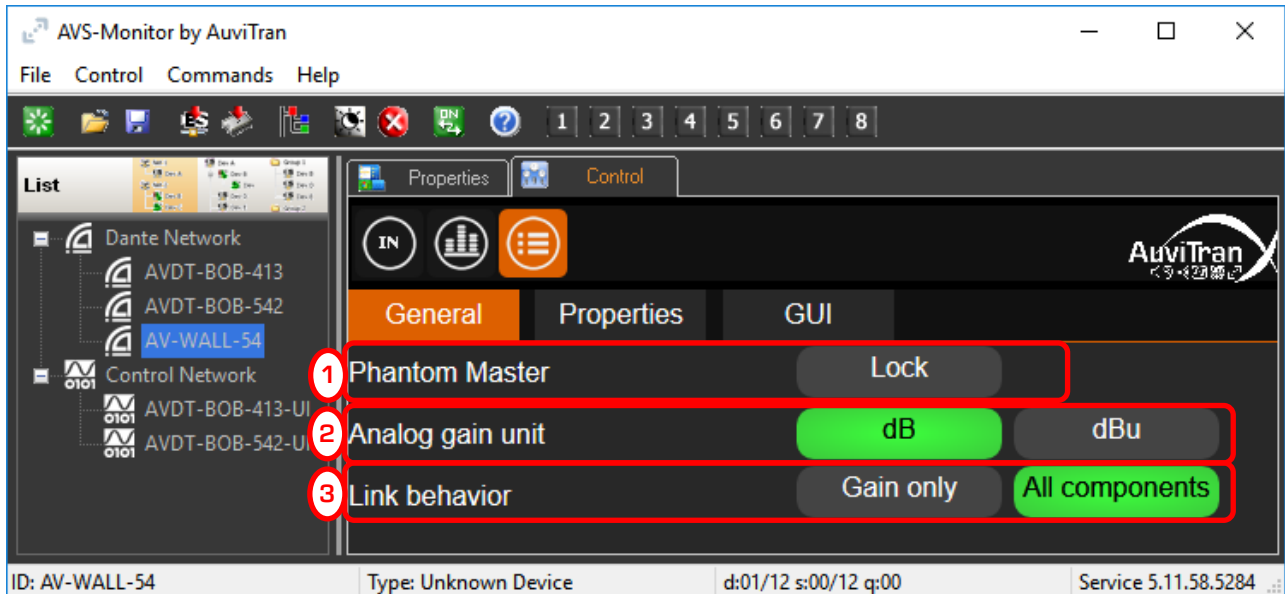
When in Dimmer mode, all LEDs are activated

- Turn left for decreasing the brightness
- Turn right to increase the brightness
- Press the button for 5s to exit the dimmer mode and return to Display mode

4 AV-WALL control using AVS-Monitor

4.1 “General” menu

This menu enables to change the behavior of the interface



1. **Phantom Master** controls if Phantom power can be changed in the “IN” interface of AVS-Monitor and from “Rotative Push button of the AV-WALL:
 - 1.1. Grey when locked (i.e. cannot be changed)
 - 1.2. Red when unlocked (i.e. can be changed)
2. **Analog gain unit** defines the unit of gain:
 - 2.1. Can be select in dB or dBu
3. **Link Behavior** defines which parameter are linked when the link button is set in the “In” interface
 - 3.1. Only Gain when “Gain Only” is Green (i.e. selected)
 - 3.2. All parameters are linked when “All components” is Green (i.e. selected)

4.2 “Properties” menu

This menu shows information on the selected AV-WALL

The screenshot displays the AVS-Monitor by AuviTran application window. The interface includes a menu bar (File, Control, Commands, Help), a toolbar with various icons and numbered buttons (1-8), and a main content area. On the left, a 'List' pane shows a tree view of devices under 'Dante Network' and 'Control Network'. The 'AV-WALL-54' device is selected. The main area is divided into 'Properties' and 'Control' tabs. The 'Properties' tab is active, showing a sub-menu with 'General', 'Properties', and 'GUI'. The 'Properties' sub-menu is selected, displaying the following information:

URL in use:	Embedded service.
Device model :	AVW-WALL-DT4I
Serial Number :	54
Firmware version :	CPU: 2.003
Software version :	r5285
Name:	AV-WALL-54
IP @:	127.0.0.1

At the bottom of the window, a status bar displays: ID: AV-WALL-54 | Type: Unknown Device | d:02/12 s:00/11 q:00 | Service 5.11.58.5284

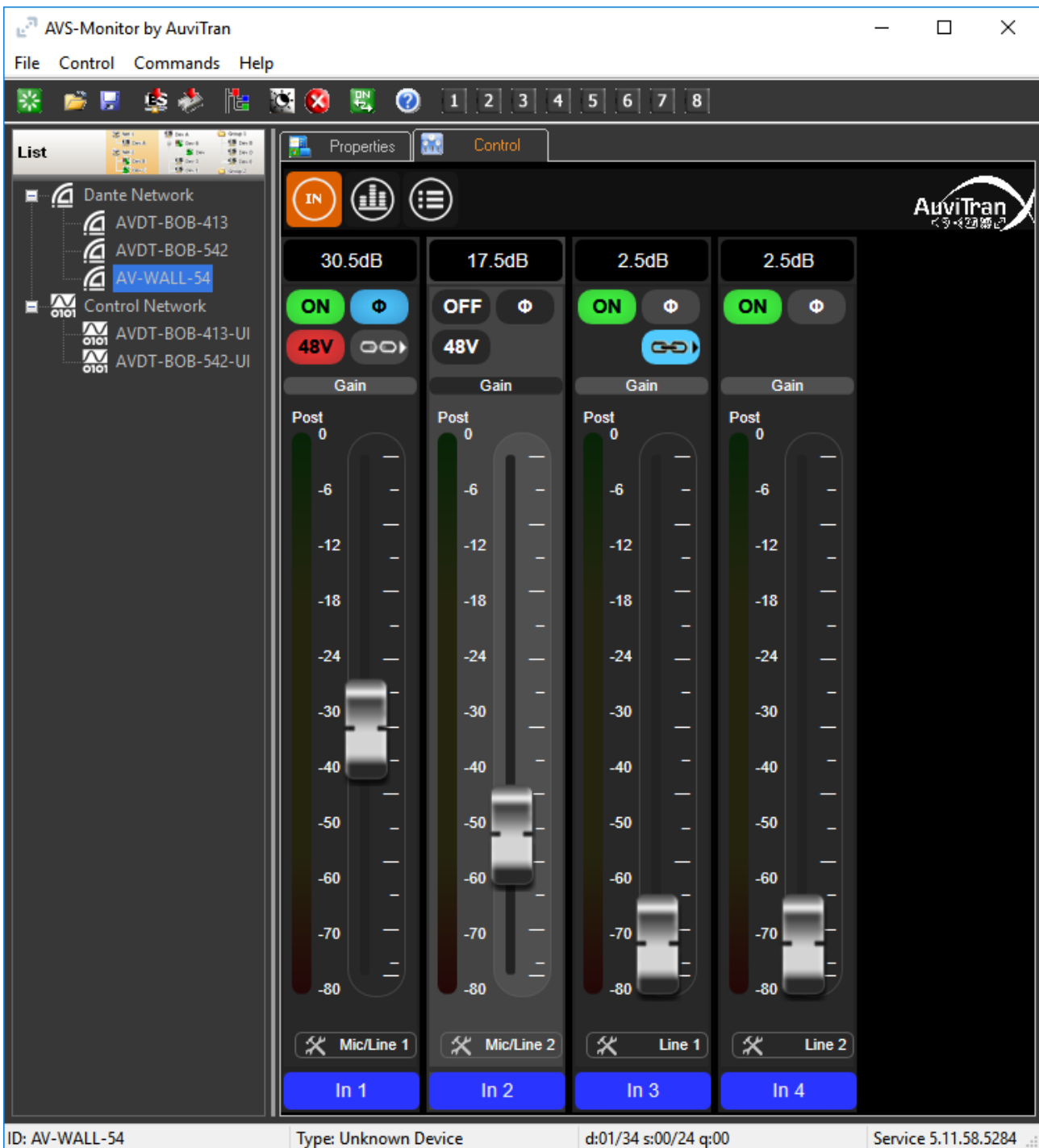
4.3 “GUI” menu


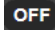



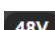


This menu gives access to GUI parameters for the AV-WALL



1. **QOS** when ON (Green) displays information of network and interface speed/interactivity;
2. **Double click to init** fader when ON (Green) enables to set the gain to 0dB when a double click is done the fader
3. **Vu meter width** defines the thin of the vu-meter

4.4 “IN” Interface



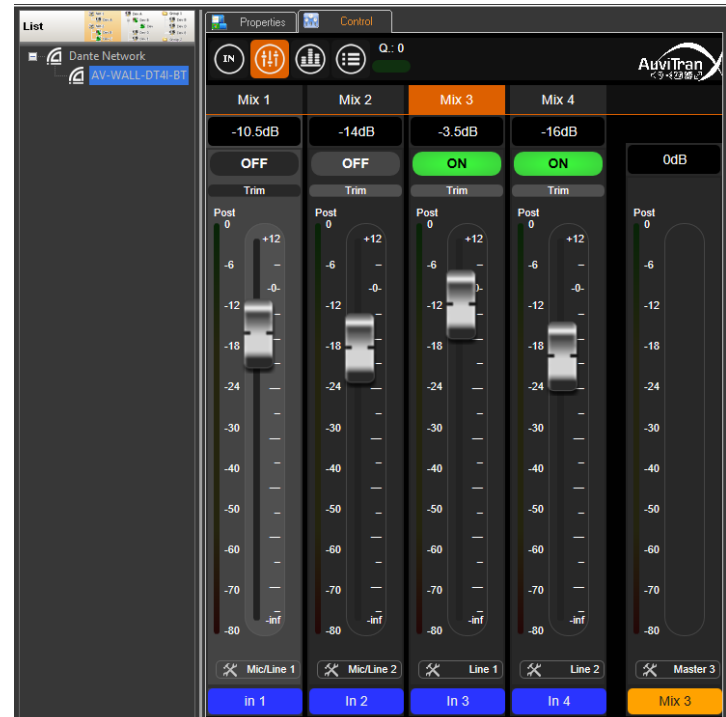
-   button unmutes when Green or mutes (i.e. when Black) the corresponding input
-   button inverts when Blue or not when black the phase of the corresponding input
-   button enables 48V phantom power when Red on corresponding Mic/Line
-   button links when blue or not when black the 2 consecutive inputs

4.5 “Mixers” Interface

For each of the 4 AV-WALL channels a mixer is available to mix the 4 AV-WALL inputs.



Changing the master mix of the 1st channel



Changing the master mix of the 3rd channel

ON **OFF** button unmutes when Green or mutes (i.e. when Black) the corresponding mixer input

Each mixer has a “Master” VU meter to monitors mix levels. Mixers inputs have as well VU meters and faders.