

CM8E



The Apart CM8E is a 2-way 100 volt built-in ceiling loudspeaker. The loudspeaker has an 8" woofer, a 1" coaxial tweeter and a high quality 100 volt loudspeaker line transformer with multiple power taps. CM8E is the perfect choice for the distribution of microphone calls and background music. The mounting frame is made of high quality ABS. CM8E is available in white.

Safety precaution

- Keep this manual for future reference.
- When cutting the mounting hole for the loudspeaker, make sure there is sufficient clearance behind the panel (no obstructions like A/C channels, power lines etc).
- Take care of your loudspeaker wires, they should be free of damage. Damaged loudspeaker wires might result in poor sound quality and can damage amplifiers.
- Only use accessories specified by the manufacturer
- Make sure the mounting panel can support the loudspeaker's weight.
- Use sufficient amount of loudspeakers to avoid dead spots.
- No mains power shall be connected to the loudspeakers, doing so will damage the loudspeaker.
- This apparatus should only be serviced by qualified personnel. If not warranty might be void.
- Use cable of the right gauge, certainly for long runs.
- Use cables with clear color indication and maintain polarity throughout the whole system.
- Avoid loud feedback from microphones, this can damage your loudspeaker.
- Please check the units condition after unpacking. If the outside of the carton box has been damaged, inform your shipper immediately.

Warranty info

Warranty claims and claims for hidden defects can be considered only if the defects appear within the warranty period of 24 months and are notified within 8 days following their appearance per registered letter. The warranty is not valid in case of an incident, wear, for moving parts, power surges, inadequate packing or shipping, improper use or

storage and the disregard of recommendations of Apart-Audio. The warranty only concerns the spare parts and not the involved labor, transportation or any other costs. The product must be returned in the original packaging with the proof of purchase by an Apart-Audio authorized reseller. The general terms and conditions can be found here:

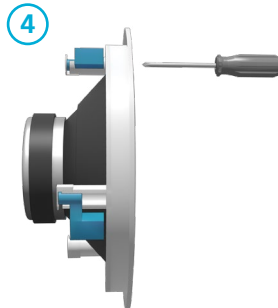
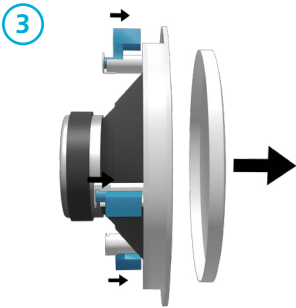
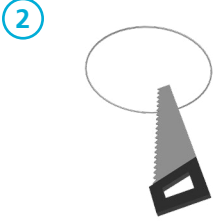
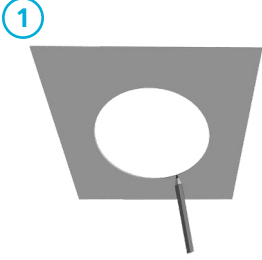
The general terms and conditions can be found here:

http://www.apart-audio.com/conditions/General_Terms_and_conditions_Apart_Audio.pdf

Mounting the loudspeaker

The loudspeaker is easy to install, due to its simple mounting system.

- (1) Use the cutout template to mark the mounting hole.
- (2) When making the hole in your mounting panel, double check if there are no cables or any other obstructions behind the mounting panel. Cutting the mounting panel without this check might result in damaged infrastructure or power lines. Please make sure that the mounting structure is capable of safely supporting the loudspeaker's weight.
- (3) Remove the speaker grille: turn the mounting clamps (dog-ears) outwards and push them in the direction of the grille until it pops out. Remove the grille.
- (4) Turn the dog-ears inwards again and tighten the dog-ear screws slightly to make them stay in the inward position.
- (5) Connect the loudspeaker wires and insert the loudspeaker in the pre-cut loudspeaker opening.
- (6) Fasten the dog-ear screws carefully until the loudspeaker sits safely in place. Do not overtighten the dog-ear screws!
- (7) Carefully push the grille back in place.



loudspeaker system	2-way	main construction material	ABS plastic
woofer size	8 inch	grille main material	aluminium
woofer cone material	polypropylene	IP rating	54
tweeter size	1 inch	mounting system	3 screws
100 volt power taps	6 - 3 - 1.5 watts	outside diameter	244 mm
frequency response	50 - 20 kHz	depth	87 mm
SPL 1W/1m	88 dB	cutout diameter	223 mm
max SPL 1m	96 dB	min / max ceiling thickness	3 - 27 mm
dispersion angle 1000 Hz	180°	net weight product	1.24 kg