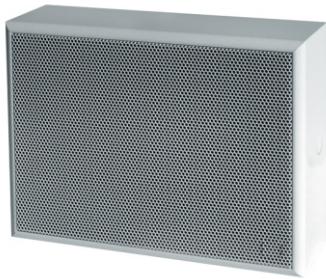


WALL SPEAKER

EN-SMS6T6-W

Certificate No.: 1438/CPD/XXXX



The Apart-audio EN-SMS6T6-W is a surface mounted speaker made of high density MDF with a steel grille (RAL 9010 equivalent), equipped with a high efficiency full range speaker and a multitap 100 volt transformer, all certified according EN 54-24. The unit is equipped with a ceramic speaker line connector block and thermal fuse. Popular applications: background music, microphone calls (paging) and evacuation systems. The highlights are: steel frame, cabinet and grille, ceramic connector block, thermal fuse.

Mounting instructions

1. Mount the base plate on the wall or ceiling.
2. Connect the speaker line cable to the ceramic connector block. Select the speaker power as required by the application. The 100 volt transformer is equipped with multiple output taps. Default power = 6 watt.
3. Install the speaker cabinet on the base plate, so that the spring clamp engages in the drill-hole. Press the second spring clamp with a screwdriver to the inside. Push the speaker onto the wall, so that the second spring clamp engages.
4. Use the included plastic caps to cover the drill-holes at both sides.



Safety precautions

- Keep this manual for future reference.
- When making the hole in your mounting panel to mount the Apart speaker, make sure there is sufficient clearance behind the panel (no obstructions like A/C channels, power lines etc, ...).
- Take care of your speaker wires, they should be free of damage. Damaged speaker wires may result in poor sound quality and can damage amplifiers.
- Only use accessories specified by the manufacturer.
- Make sure the mounting panel can support the speaker's weight.
- Use a sufficient amount of speakers to avoid dead spots.
- No main power shall be connected to the loudspeakers, doing so will damage the speaker.
- This apparatus should only be serviced by qualified personnel. If not serviced by qualified personnel, warranty may be void.
- Use cable of the right gauge, certainly for long runs.
- Use cables with clear color indication and maintain polarity throughout the whole system.
- Avoid loud feedback from microphones, this can damage your speaker.
- Please check the unit's condition after unpacking. If the outside of the carton box has been damaged, inform your shipper immediately.

Warranty info

Apart Audio warrants this product to be free of defects in material and workmanship for a period of one year for parts and for a period of one year for labor from the date of original end-user purchase. This warranty is valid only for the original end-user and cannot be transferred. During the warranty period Apart Audio or one of its authorized service partners shall either repair or replace any product, free of charge, that proves to be defective on inspection by Apart Audio or its authorized service representative. This warranty does not include, damages or product faults due to abuse, misuse or faulty installation.

Legal info

Audioprof nv
Industriepark Brechtsebaan 8 bus 1, 2900 Schoten - Belgium
Company names, product names and trademarks are property of their respective owners. Apart-Audio specifications are subject to change without notice.

Technical specifications

Speaker type	Coated paper cone
Woofer size	6 inch
Dimensions (Ø x d)	252 x 192 x 82 mm
Colour	white
100 volt transformer power taps	6 / 3 / 1.5 watts
Frequency response (-10 dB, IEC268-5)	178 - 13900 Hz
Frequency range	110 - 15000 Hz
Dispersion angle -6 db, 500 Hz / 1 kHz / 2 kHz / 4 kHz	180° / 78° / 107° / 54°
SPL 1W / 1m (IEC268-5)	94.6 dB
SPL 1W / 4m (IEC268-5)	82.6 dB
SPL Pmax / 4m (IEC268-5)	90.4 dB
SPL Pmax / 1m (IEC268-5)	102.4 dB
Sensitivity EN54-24, 1W / 4m	79.5 dB
IP classification	54
Chassis material	MDF-wood
Grille material	powder coated steel