

Installation Guide

16-Port and 24-Port Gigabit Ethernet Smart Managed Pro Switch with 2 SFP Ports

48-Port Gigabit Ethernet Smart Managed Pro Switch with 2 Copper and 2 Copper/SFP Combo Ports

Models GS716Tv3, GS724Tv4 and GS748Tv5

Package Contents

- Switch
- Power cord
- Rubber footpads for tabletop installation
- Rack-mount kit for rack installation
- Installation guide

Ethernet cables are not included.

Note: For more information about installation, see the hardware installation guide, which you can download from <https://www.netgear.com/support/>.

Configure the switch with a static IP address

Note: If your network uses a DHCP server, this section does not apply. Go directly to [Connect the switch to a network](#).

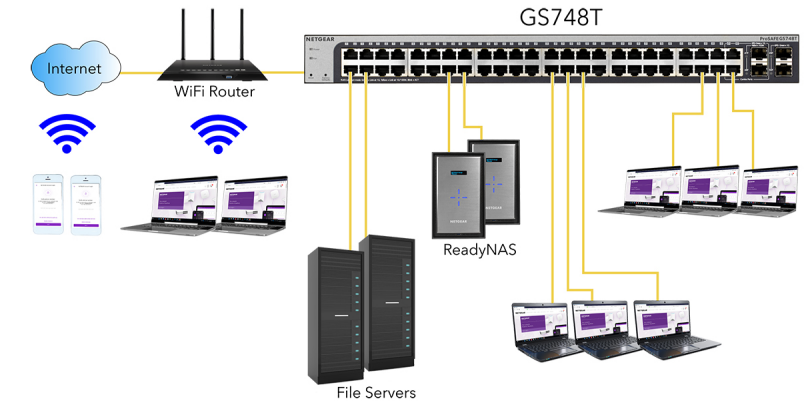
If you are using static IP addresses in your network, configure the switch IP address before you connect the switch to a network.

1. Configure a computer with a static IP address in the 192.168.0.x subnet.
2. Plug the switch into a power outlet and connect your computer to the switch using an Ethernet cable.
3. Open a web browser and enter **192.168.0.239** in the address bar. The default IP address of the switch is 192.168.0.239. A login page displays.
4. Enter **password** for the password. The System Information page displays.
5. Select **System > Management > IP Configuration**. The IP Configuration page displays.
6. Select the **Static IP Address** radio button.
7. Enter the static IP address, subnet mask, and default gateway IP address that you want to assign to the switch.
8. Click the **Apply** button. Your settings are saved.

Connect the switch to a network

1. Connect device to the RJ-45 network ports or SFP port on the switch front panel.
2. Connect an RJ45 port or SFP port on the switch to a network that includes a DHCP server.
Note: In a small or home office network, connect the switch to the LAN port of a router, that in turn, is connected to an Internet modem.

Sample connections



Configure the switch

You can configure the switch by using the local browser interface, or by installing the Smart Control Center Utility (see [Smart Control Center Utility](#)) on your Windows-based computer.

Local browser access

1. For initial configuration, open a web browser on a computer that is on the same network and subnet as the switch and enter the switch's IP address. If you are unsure how to determine the IP address of the switch, you can use the Smart Control Center Utility.
2. A login page displays. Enter **password** for the password. The System Information page displays.
3. Configure the switch for your network. For information about switch configuration, see the user manual for your switch, which you can download from [netgear.com/support/](https://www.netgear.com/support/).

Smart Control Center Utility

The Smart Control Center Utility runs on Windows-based computers. You can visit [netgear.com/support/](https://www.netgear.com/support/), enter **Smart Control Center** in the search box, and click the **Downloads** button.

Install the Smart Control Center Utility

Note: The Smart Control Center Utility requires Adobe Air. If Adobe Air is not detected during Smart Control Center Utility installation, you are prompted to allow Adobe Air to be installed.

Note: For optimal discovery performance, we recommend that you restart your computer after installing the Smart Control Center Utility.

Configure the switch with the Smart Control Center Utility

1. Connect the computer to the network.

The computer that is running the Smart Control Center Utility must be on the same network (with same broadcast domain) as the switch.

2. Click the **Discover** button.

The Smart Control Center Utility finds Smart Managed Switches on the network and displays each switch's MAC address, IP address, and model number.

If the utility does not discover your switch, verify that the cable connections are secure and that the computer's IP address is in the same subnet as the switch, and click the **Discover** button.

You might need to temporarily turn off the antivirus program, firewall, or both on the computer so that the utility can discover the switch.

3. Select the switch that you want to configure.
4. Click the **Web Browser Access** button.
5. When prompted, enter the password.

The default password is **password**.

6. Click the **Login** button.

The System Information page displays.

7. Configure the switch for your network.
For information about switch configuration, see the user manual for your switch, which you can download from [netgear.com/support/](https://www.netgear.com/support/).
8. When you are finished with the configuration, return the computer's antivirus program and firewall to their usual settings.

Troubleshooting tips

Here are some tips for correcting simple problems that might occur.

- Be sure to power on your computer and switch in the following sequence:
 1. Turn on the switch and wait about two minutes.
 2. Turn on the computer and connect it to the switch.
- Make sure the Ethernet cables are plugged in.

For each powered-on computer connected to the switch, the corresponding switch LAN port status LED is lit.

- Make sure the network settings of the computer are correct.

In most cases, computers should be configured to obtain an IP address through DHCP. If your network uses static IP addresses, be sure that the switch and computer are configured with valid IP addresses. For more information, see the software administration manual.

Support

Thank you for purchasing this NETGEAR product. You can visit <https://www.netgear.com/support/> to register your product, get help, access the latest downloads and user manuals, and join our community. We recommend that you use only official NETGEAR support resources.

Si ce produit est vendu au Canada, vous pouvez accéder à ce document en français canadien à <https://www.netgear.com/support/download/>. (If this product is sold in Canada, you can access this document in Canadian French at <https://www.netgear.com/support/download/>.)

For regulatory compliance information including the EU Declaration of Conformity, visit <https://www.netgear.com/about/regulatory/>.

See the regulatory compliance document before connecting the power supply.

Do not use this device outdoors. If you connect cables or devices that are outdoors to this device, see <https://kb.netgear.com/000057103> for safety and warranty information.



201-17192-03

September 2019

© NETGEAR, Inc., NETGEAR and the NETGEAR Logo are trademarks of NETGEAR, Inc. Any non-NETGEAR trademarks are used for reference purposes only.

NETGEAR, Inc.
350 East Plumeria Drive
San Jose, CA 95134, USA



NETGEAR INTL LTD
Floor 1, Building 3, University
Technology Centre
Curraheen Road, Cork
T12EF21, Ireland