

Infrared Interactive Touch Display

User's Manual



Manual Version PTG1.0

Safety Instructions



- Please keep the display away from any heat sources such as electric radiators or direct sunlight. Place the display in a stable and well-ventilated place.
- Please handle with care so as to not damage the LCD panel.
- The holes or openings on the display are designed for ventilation. Do not cover or block the ventilation holes or openings with any objects.
- Remove protective covering from the screen before you use the display.
- As the display surface is vulnerable to scratches, avoid touching the surface with sharp pen point.
- Shut off the power supply before cleaning. Use a soft lint-free cloth instead of a tissue to wipe the screen.
- You may use a glass cleaner to clean the product as required. However, never spray the cleaner directly onto the display surface.
- Do not attempt to repair this product yourself! Improperly disassembly of the product may invalidate the warranty and lead to possible danger!

Quick Start Guide (connecting to an external PC/Media Player)

Although the screen has a built in Android operating system accompanying software you can also connect it to an external source. The touch screen must be connected to the PC in two ways: visually and interactively. The recommended visual connection is via a HDMI Cable (included) meaning that the display acts like a monitor for the PC. The touch function is achieved by linking the touch panel on the screen directly to the PC via the USB Cable (included).

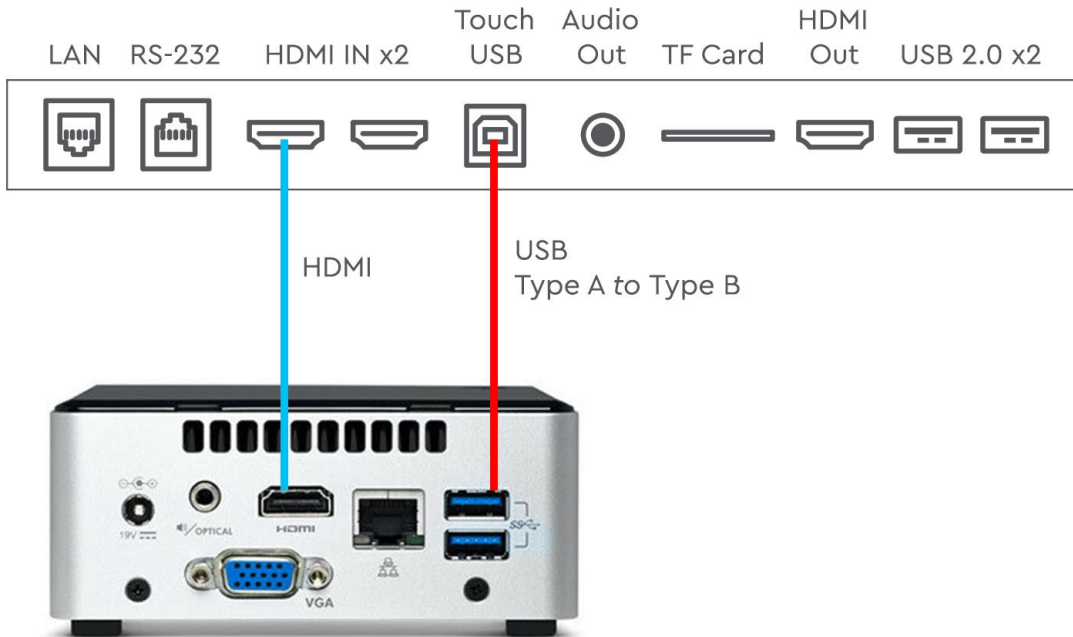
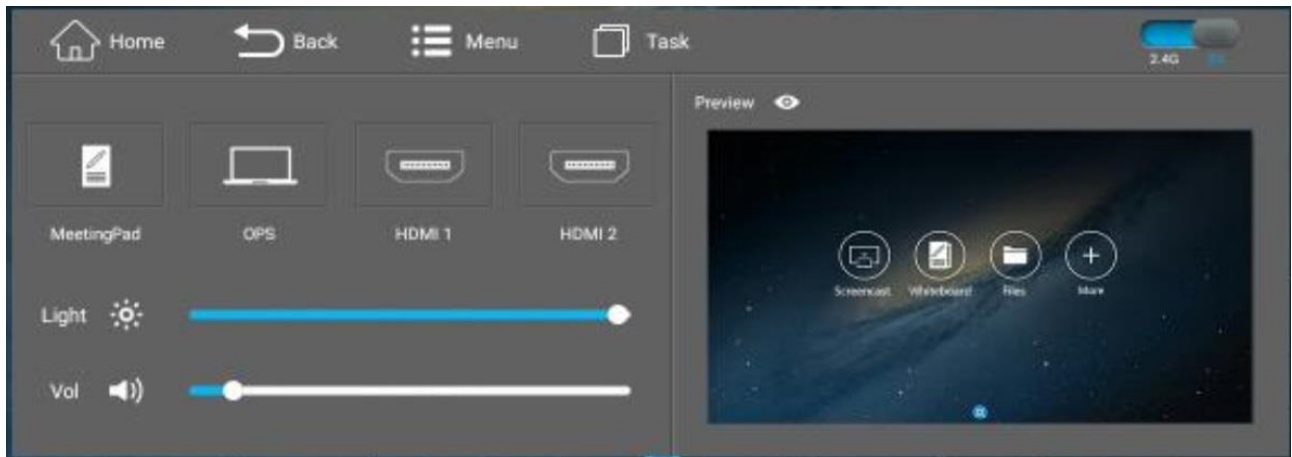


Figure 1 Screen to PC Connections

Connect the screen to the PC via HDMI cable and USB cable using the screen's front ports (as shown above). Once these connections have been made and the PC powered ON take the power lead and insert it into the screen and connect to mains outlet. The unit should power ON automatically, if it doesn't please turn the power switch (next to the power input) to the ON position. If the video signal of the PC does not display then please ensure that the screen is sourcing its display from the PC. Begin by accessing the Control Panel: swipe your finger up from the bottom of the screen to the middle of the screen:

From here you can preview a different input source, such as HDMI, then once selected you can touch the "Signal source" panel on the left hand side, or the preview window, to switch the touch screen to this input.



Contents:

1.	Introduction	6
1.1	Box Contents	6
1.2	Product Overview	7
1.3	Remote Control	8
2.	Menu Operation	9
2.1	Inputs	13
3.	Connecting your Touch Screen to a network.....	15
4.	MeetingPad System	17
5.	Connecting to an external PC/Media Player.....	18
6.	F.A.Qs and Troubleshooting Guide	21
6.1	My Screen is not displaying what is on my PC/external source.....	21
6.1.1	Input Source	21
6.1.2	Display/monitor button on PC keyboard	21
6.2	My monitor's image is unstable, unfocused or swimming	21

Table of Figures

Figure 1 Screen to PC Connections	2
Figure 2 Product Overview	7
Figure 3 Remote Control	8
Figure 4 Rear Inputs	13
Figure 5 Screen to PC Connections	18

1. Introduction

Congratulations on your purchase of our product. Please read carefully and follow all instructions in the manual before first use.

The product should not be exposed to liquids dripping or splashing and no objects filled with liquids, such as vases, should be placed on the product.

For user convenience, a number of operations can be performed through the remote control.

Attention:

1. Do not change any default setting when it is unnecessary.
2. Keep the product far away from water during installation and use.

1.1 Box Contents

1 x IR Interactive Touch Screen

1 x Power Cable

4 x Wi-Fi Aerial

1 x Remote Control (with separate AAA batteries)

1 x USB A Male to USB B Male Cable

1 x HDMI Cable

2 x Smart Pen

2 x Magnetic Whiteboard Pen

1 x Extendable Pointer

2 x USB Screen Projection Dongle

1 x CD (User Manual)

IMPORTANT: Please retain your screen's packaging for the duration of your warranty.

1.2 Product Overview

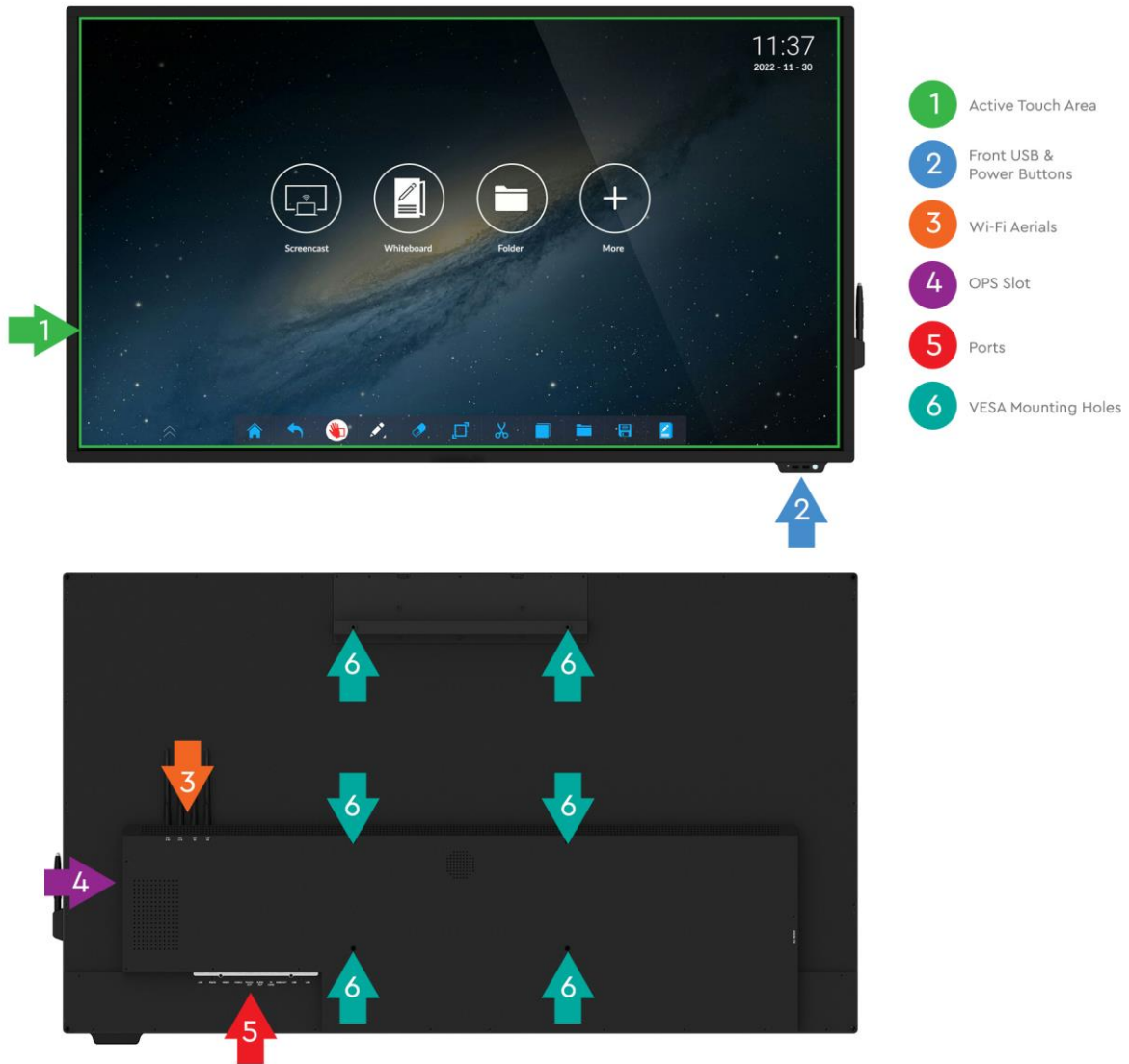


Figure 2 Product Overview

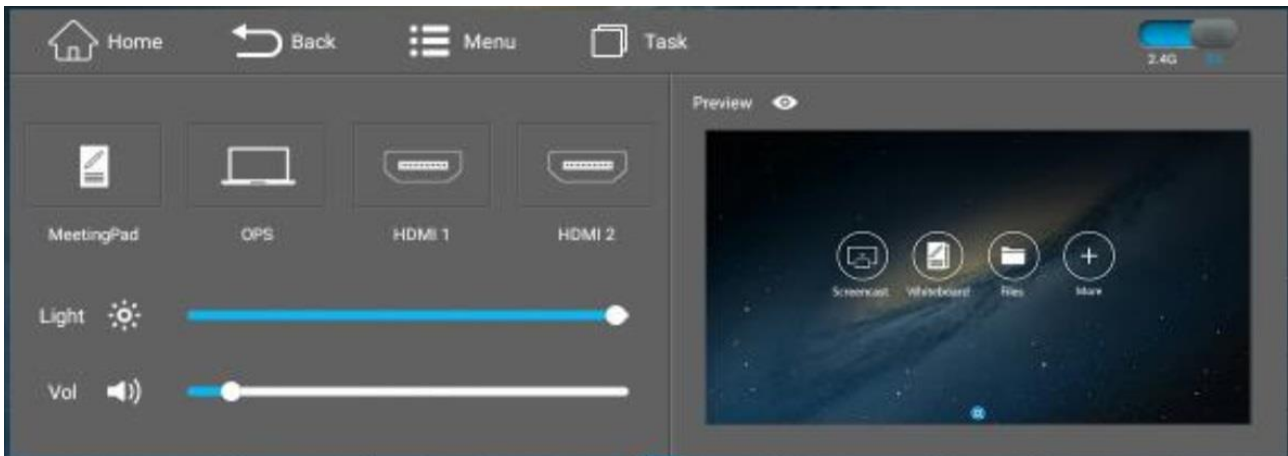
1.3 Remote Control



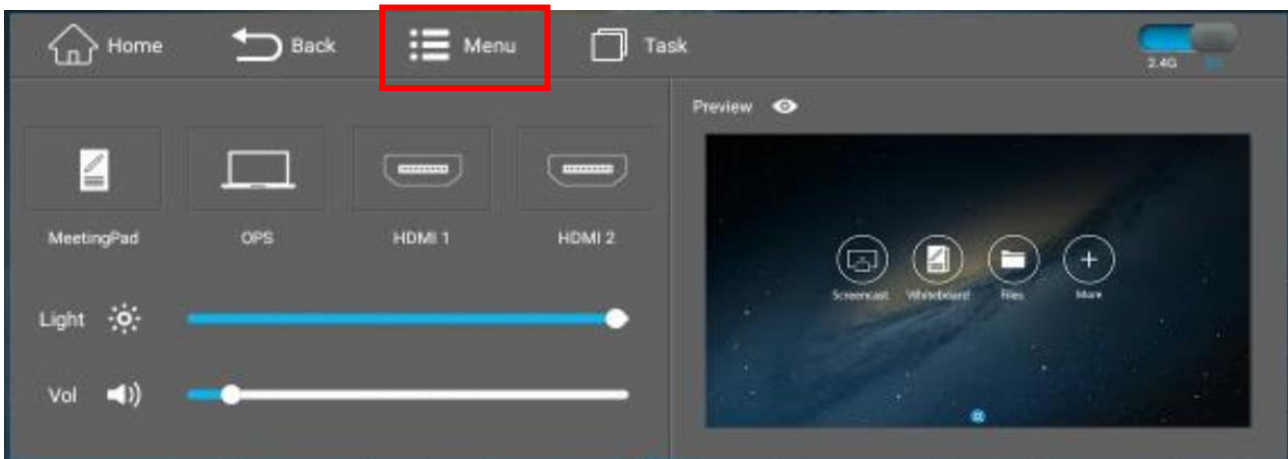
Figure 3 Remote Control

2.Menu Operation

Begin by accessing the Control Panel: swipe your finger up from the bottom of the screen to the middle of the screen:

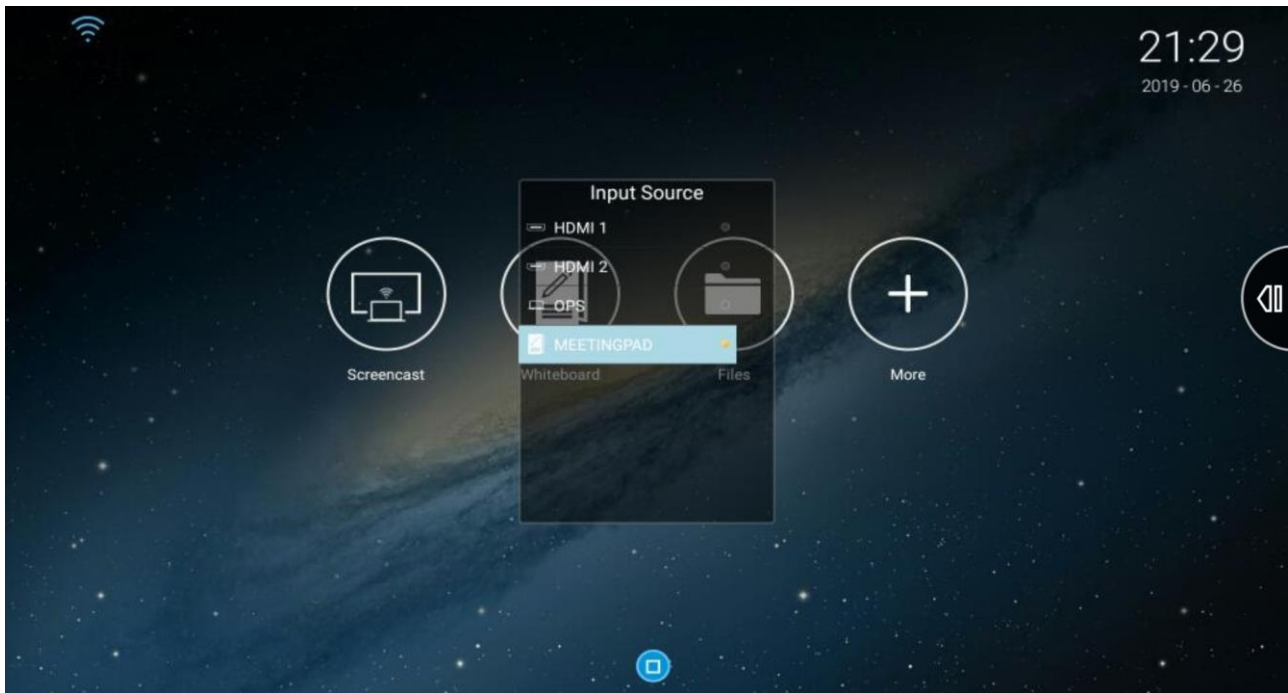


From here you can preview a different input source, such as HDMI, then once selected you can touch the “Signal source” panel on the left hand side, or the preview window, to switch the touch screen to this input. When on any other input, excluding the “MeetingPad” input, you can select the “Menu” option to change the hardware configuration such as the picture, sound and power settings.



Source

Here you can select which input source you want the touch screen to display.



Brightness

Here you can change the brightness of the display.

Sound

Here you can set the volume of the screen.

Boot Channel

Here you can choose which OS the screen will boot into when it is powered on.

Theme

Here you can choose the theme of the screens OS side.

Network Update Time

Here you can set the screen to automatically keep the time up to date by having it connected to the internet.

Change Date and Change Time

Here you can manually change the Date and Time of the screen.

Starting Time

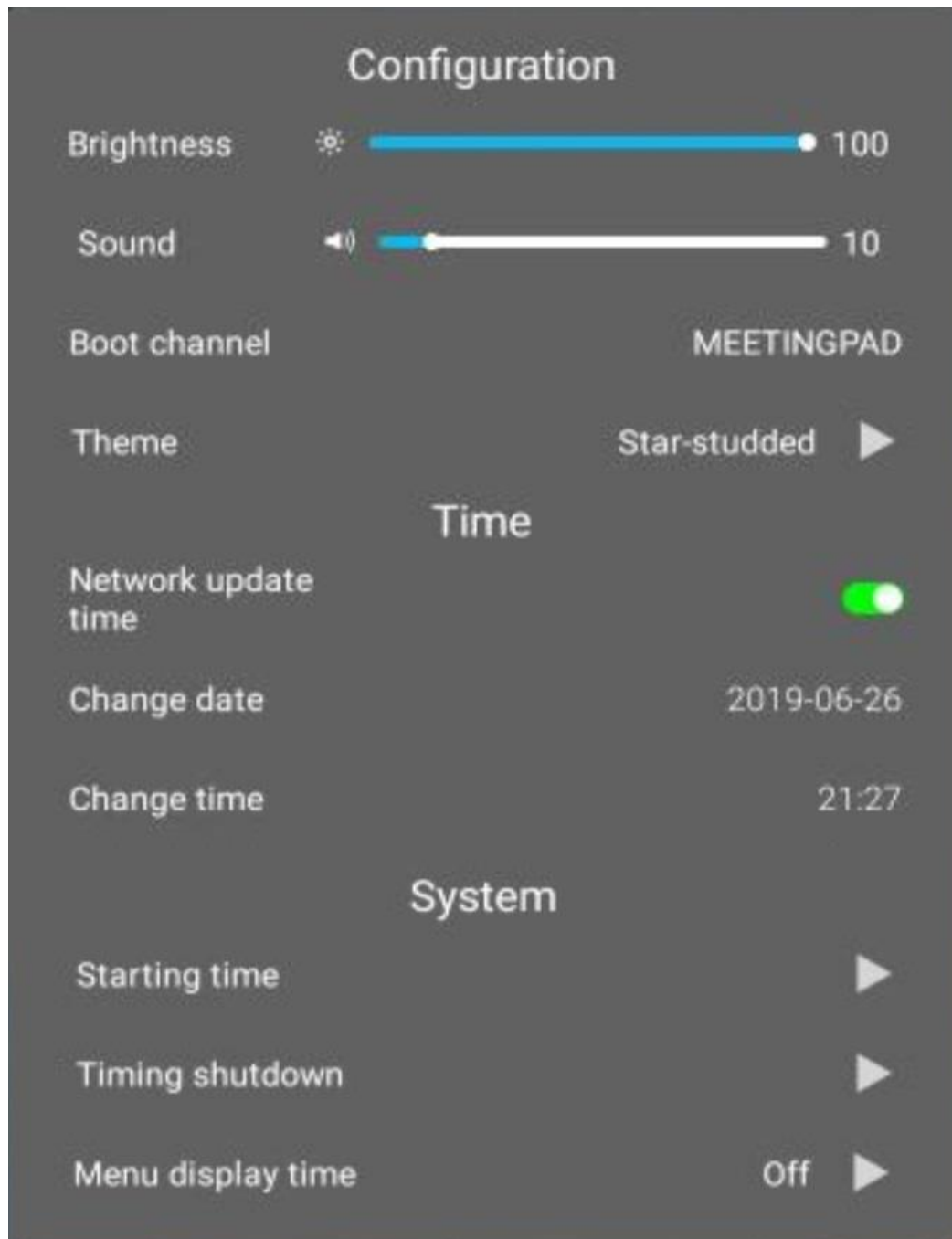
Here you can set a time for the screen to power on.

Timing Shutdown

Here you can set a time for the screen to power off.

Menu Display Time

Here you can set how long the menu is displayed before going off from inactivity. You can also set this to "Off" to have it on until it is turned off.



2.1 Inputs

MeetingPad – Android based system interface

OPS – Open Pluggable Specification PC

HDMI 1 – Rear High Definition Multimedia Interface Signal Input

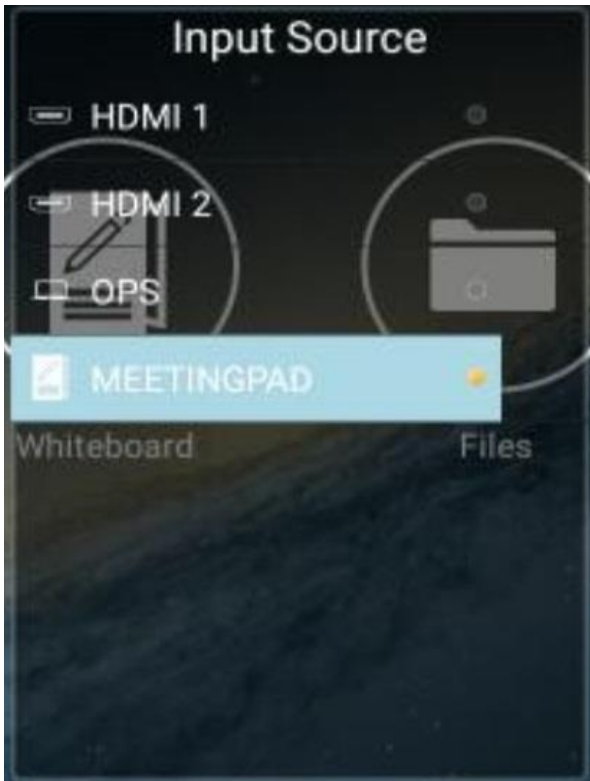
HDMI 2 – Rear High Definition Multimedia Interface Signal Input



Figure 4 Rear Inputs

Switching between inputs

There are several ways to choose between inputs such as from the main Control Panel, the “Source” option in the Menu section and also using the remote control. If using the remote please select the Input button to bring up the following menu:



Using the remote or touch screen, select the input you want the screen to change to.

3. Connecting your Touch Screen to a network

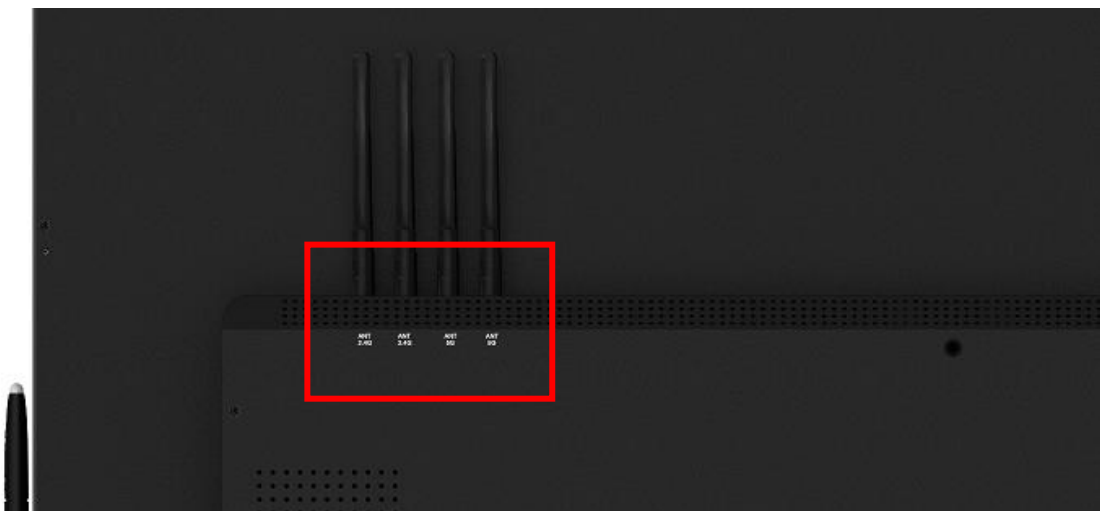
3.1 LAN

Wherever possible it is recommended that you connect your touch screen to your network using an Ethernet cable. Please connect your Ethernet cable to the LAN port on the touch screen's rear input:

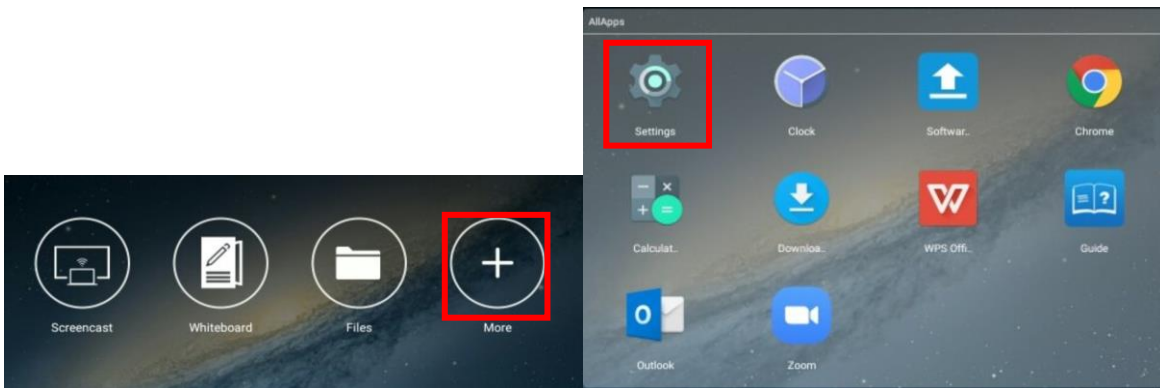


3.2 Wi-Fi Network

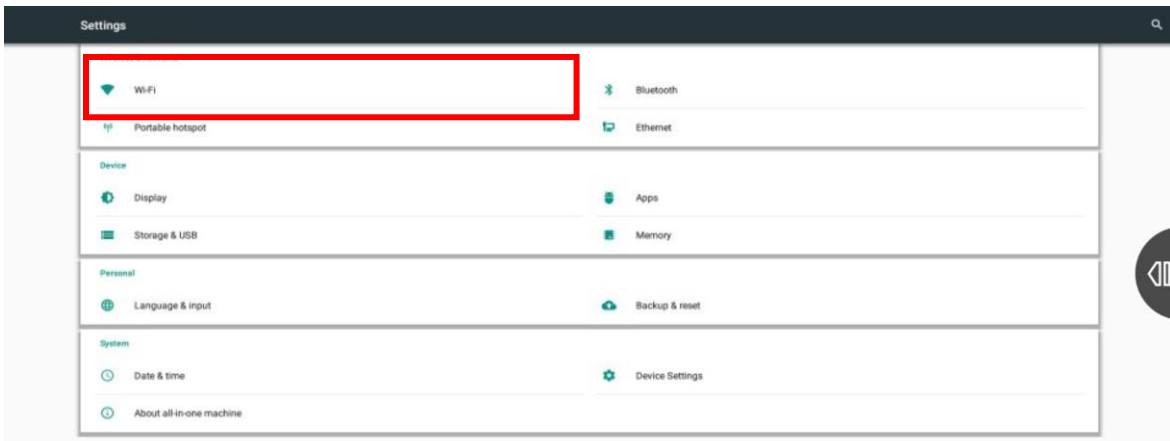
To connect your screen to your Wi-Fi network begin by ensuring that both Wi-Fi aerials have been screwed into the sockets shown below:



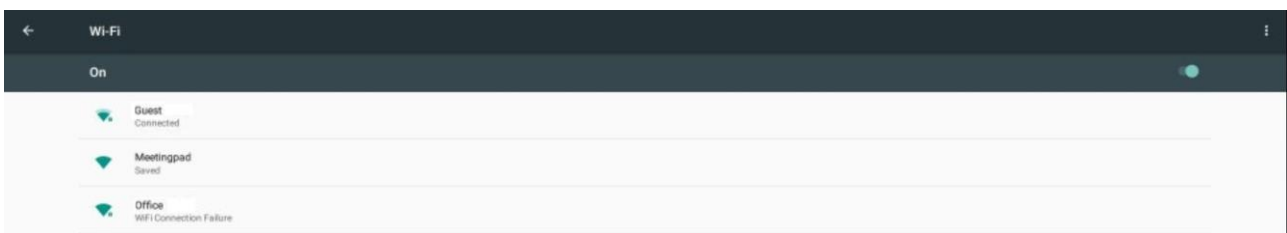
Next, from the Home screen select “More”, then “Settings”:



Next, select “Wi-Fi” from the Settings menu:



Then select the Wi-Fi network that you want to connect to, this will bring up another box allowing you to enter your password:



Once you have entered your password, using the on-screen keyboard, select “CONNECT”.

4. MeetingPad System

You will find that the MeetingPad system has been pre-loaded onto the touch screen. Using this you can perform wireless mirroring and file sharing with external devices as well as other features such as annotating documents, web browsing and cropping existing documents. The software is ideal for conducting and recording meetings and lessons.

For more details about the MeetingPad system and how to use it please see the separate “MeetingPad User Manual” document.

5. Connecting to an external PC/Media Player

Although the screen has a built in Android operating system accompanying software you can also connect it to an external source. The touch screen must be connected to the PC in two ways: visually and interactively. The recommended visual connection is via a HDMI Cable (included) meaning that the display acts like a monitor for the PC. The touch function is achieved by linking the touch panel on the screen directly to the PC via the USB Cable (included).

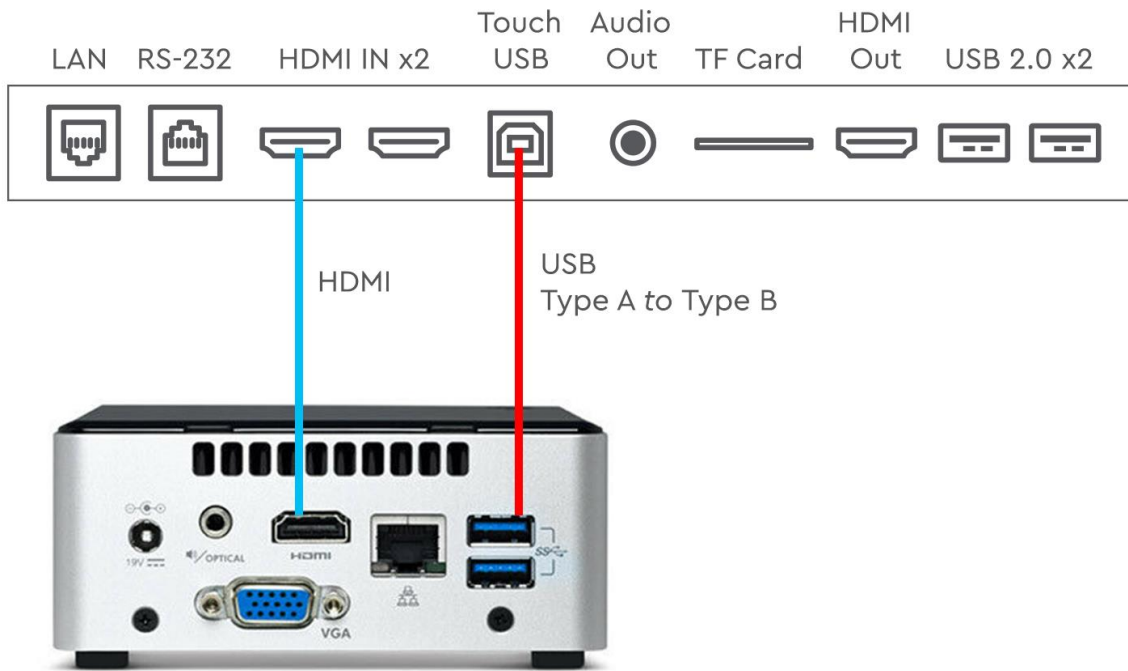
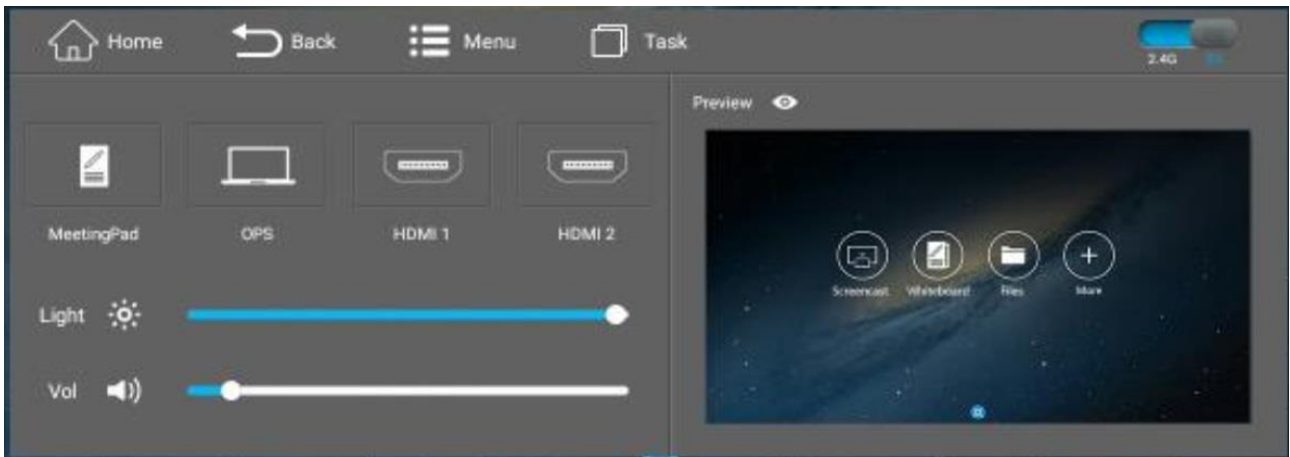


Figure 5 Screen to PC Connections

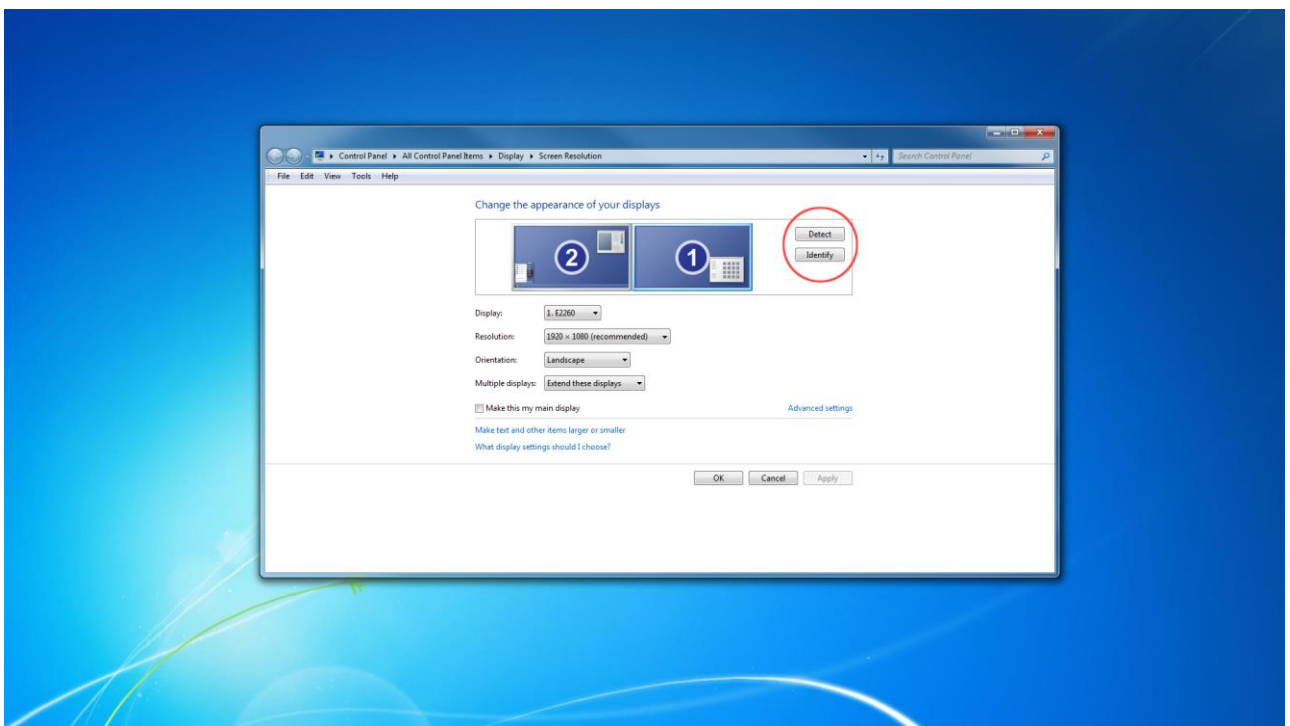
Connect the screen to the PC via HDMI cable and USB cable using the screen's front ports (as shown above). Once these connections have been made and the PC powered ON take the power lead and insert it into the screen and connect to mains outlet. The unit should power ON automatically, if it doesn't please turn the power switch (next to the power input) to the ON position. If the video signal of the PC does not display then please ensure that the screen is sourcing its display from the PC. Begin by accessing the Control Panel: swipe your finger up from the bottom of the screen to the middle of the screen:



From here you can preview a different input source, such as HDMI, then once selected you can touch the “Signal source” panel on the left hand side, or the preview window, to switch the touch screen to this input.

IMPORTANT: If the touch screen is the only monitor connected to your PC DO NOT take the following step. Only proceed with the following if you are using a laptop or another monitor is connected to your PC.

Access the display options from your Control Panel or right-click on your Desktop and choose “Properties” (then “Settings”) or “Screen resolution”. You should now click “Detect” to allow the PC to discover the Video Monitor then “Identify” to establish which display is the Video Monitor.



Select the display that corresponds with the Video Monitor display then check the box “Make this

my main display” or “Use this device as the primary monitor”. This will make the Video Monitor display your main monitor.

6.F.A.Qs and Troubleshooting Guide

6.1 My Screen is not displaying what is on my PC/external source

6.1.1 Input Source

There are several ways to choose between inputs such as from the main Control Panel, the “Source” option in the Menu section and also using the remote control and front control button. If using the remote or front controls please select the Input button to bring up the following menu:



Using the touch screen you can then swipe left and right until the input that you want is highlighted, then wait a few seconds for the screen to automatically switch input source.

6.1.2 Display/monitor button on PC keyboard

If you are sourcing your video signal from a PC your keyboard may have a display/monitor button on it, especially if you are using a laptop. If your Video Monitor does not display the content of the PC try hitting this button before contacting your supplier.

6.2 My monitor's image is unstable, unfocused or swimming

Firstly check that the video signal cable should be firmly connected to the monitor and the PC. Next, check the monitor and your display card with respect to compatibility and recommended signal timings.

If your text is blurred, reformat the video mode to “non-interlaced” and use 60Hz refresh rate.