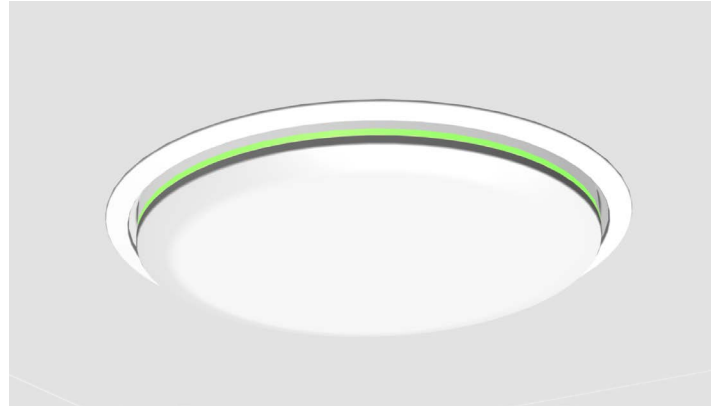


Parlé TCM-X-FM Flush Mount Kit Installation Guide



Flush Mount TCM-X (Mic flush with ceiling)



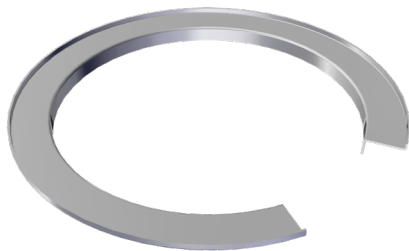
Recessed Mount TCM-X (LED flush with ceiling)

PRODUCT DESCRIPTION

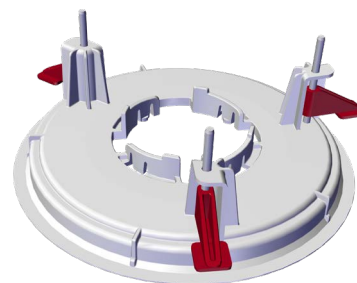
The TCM-X-FM provides options to mount the Parlé TCM-X microphone in flush and recessed mounting positions.

- Available in white or black
- Supports two LED viewing angles: Flush mount 130°; Recessed mount 170°
- Can install in drop tile ceilings or finished drywall ceilings with at least 64 mm (2.5") clearance
- Can mount in ceilings with a thickness of 13-24 mm (0.5" - 0.95") using the C-Ring or 16-25 mm (0.625" - 1") if using an optional tile bridge
- Conforms with UL2043 and is approved for use in plenum air spaces

KIT CONTENTS



C-Ring



Flush Mount Bracket



Spacer



Adapter



Strain Relief Washer

C-RING INSTALLATION

Prepare ceiling using hole template. Remove any debris from around the hole.

Note: This method can also be used with prewired finished drywall ceilings (minimum 64 mm [2.5"] clearance above ceiling).

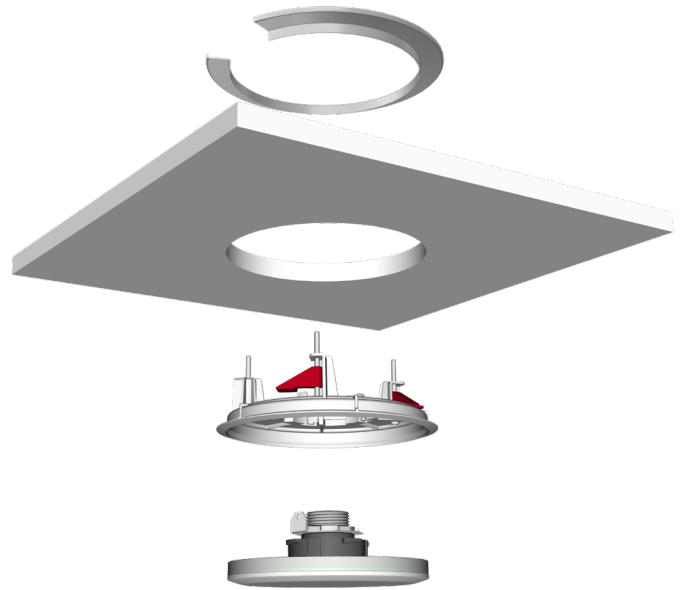
1. Insert C-Ring into hole above ceiling. Flex and rotate C-Ring up/in, if above-ceiling access isn't available.
2. With clamps rotated in, insert flush mount bracket into the ceiling. Remove any tape holding the clamps.
3. Clamp bracket onto the C-Ring by screwing (3) clamps down with a Phillips screwdriver. Ensure clamps are all positioned on the C-Ring before fully tightening.
4. Screw the adapter, washer, and conduit nut onto the TCM-X shaft, with or without the spacer depending on desired position in the ceiling. See next page for exploded views and images.

Note: The spacer and adapter both have notches that must fit onto the ribs on the top of the mic (see Alignment Detail).

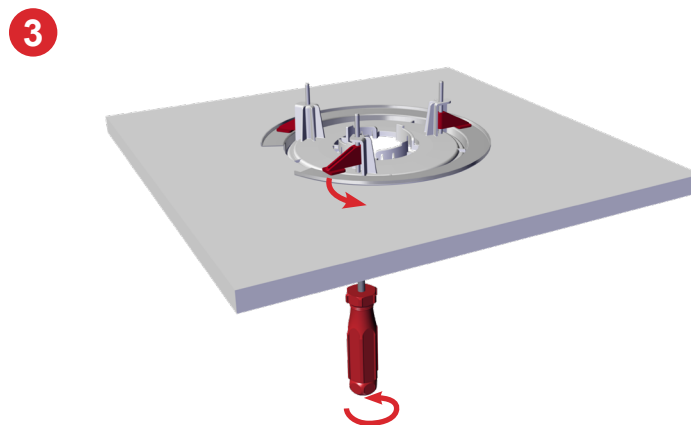
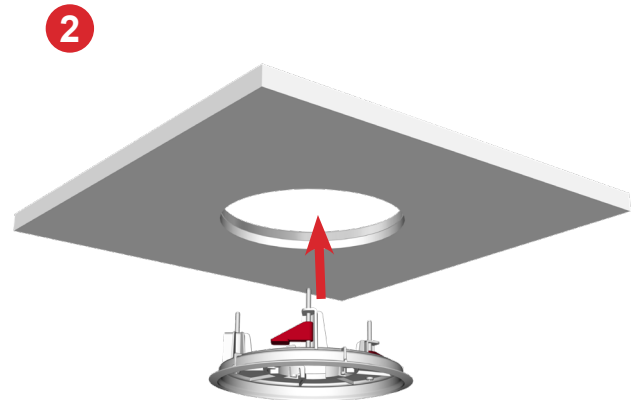
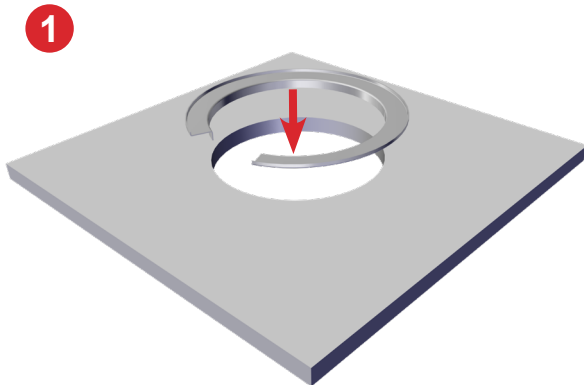
5. Insert the assembled mic into the bracket, push up and rotate to lock into place.

Note: Make wiring connections to mic before inserting it in finished drywall ceiling.

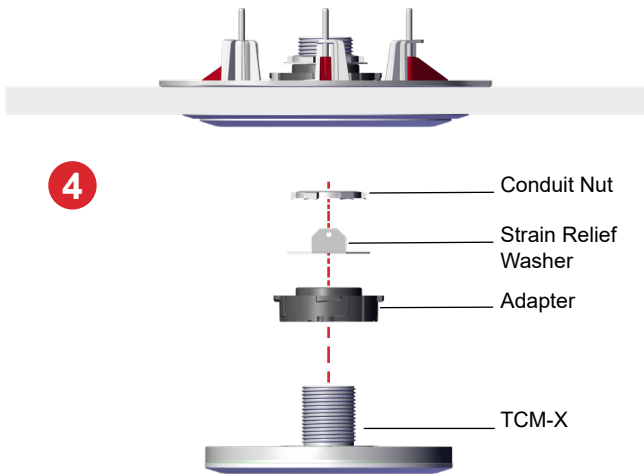
Finish installation per the [Parlé TCM-X installation guide](#).



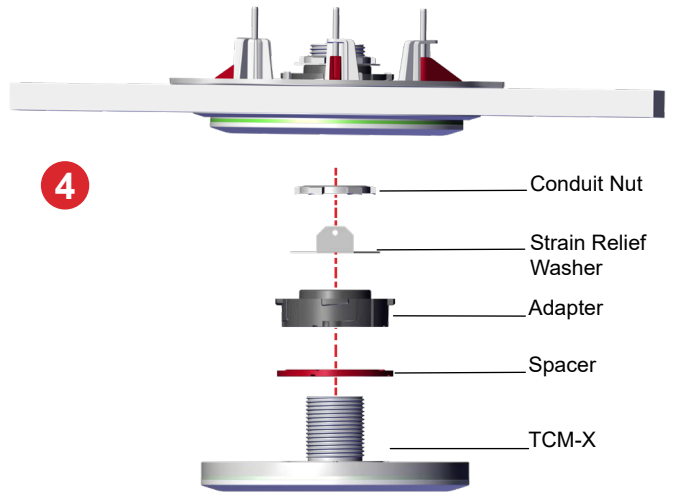
TCM-X-FM Exploded Assembly



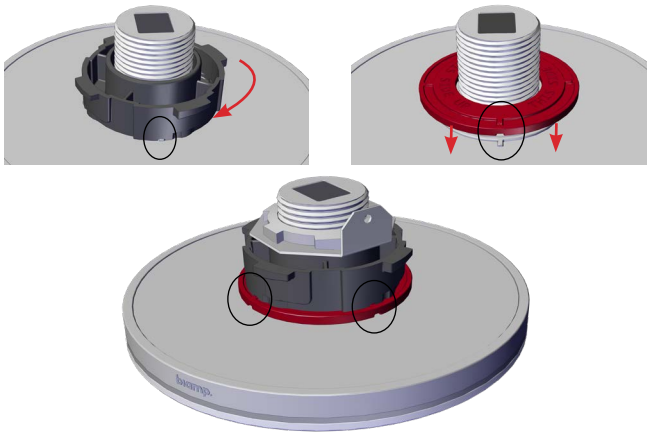
Flush Mount



Recessed Mount

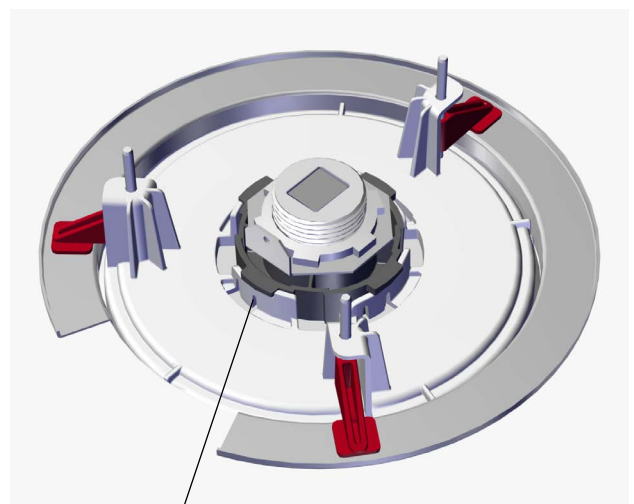
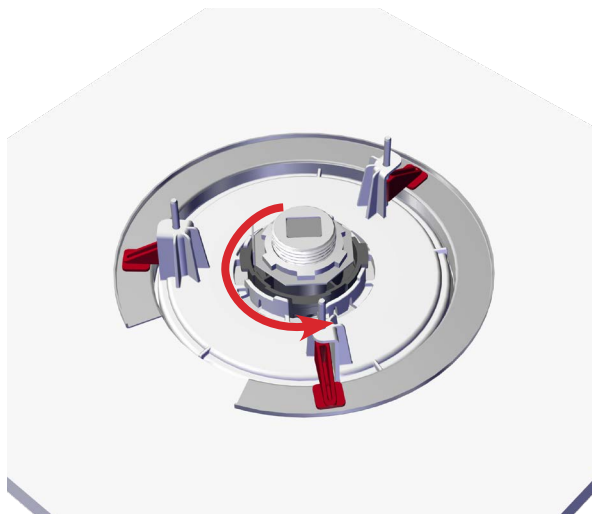
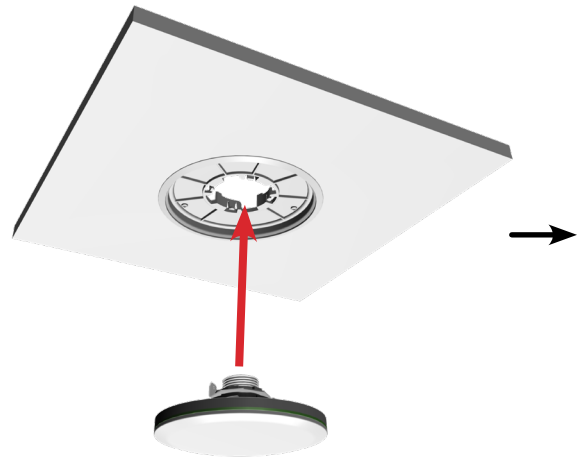


Alignment Detail



Notches in adapter (and spacer) must fit onto raised ribs on the top of the microphone (circled) before tightening conduit nut

5



TCM-X fully seated

INSTALLATION WITH OPTIONAL TILE BRIDGE (TB-1)

Install tile bridge and prepared ceiling tile in the ceiling grid.

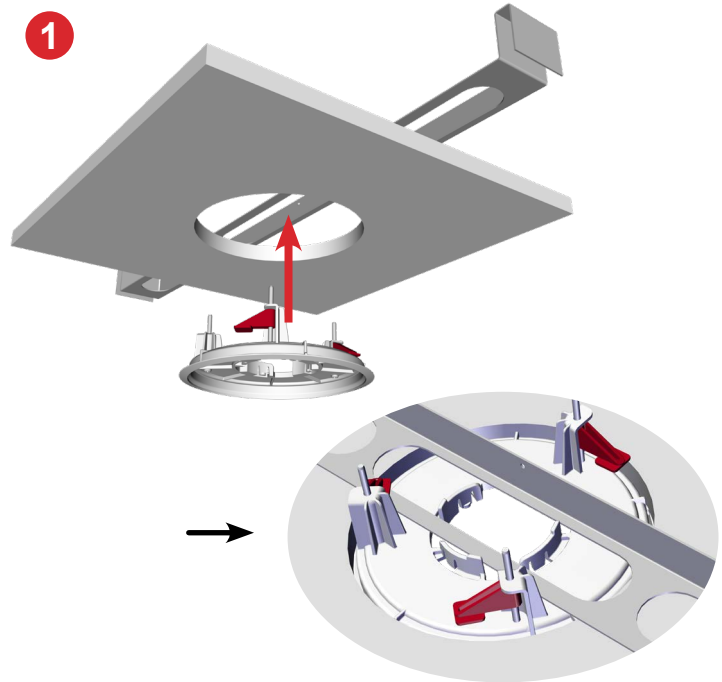
Note: Access to the tile bridge above the ceiling will be necessary to complete this installation.

1. Rotate the clamps in, and insert the bracket in the hole. It must fit in the tile bridge opening as shown in the detail.
2. Tighten clamps with a Phillips head screwdriver. They should hold the bracket in place, but not deform the tile.
3. Insert the mic into the bracket and tile bridge. Secure the mic on the assembly with the octagonal strain relief washer and conduit nut. The adapter will not be used.

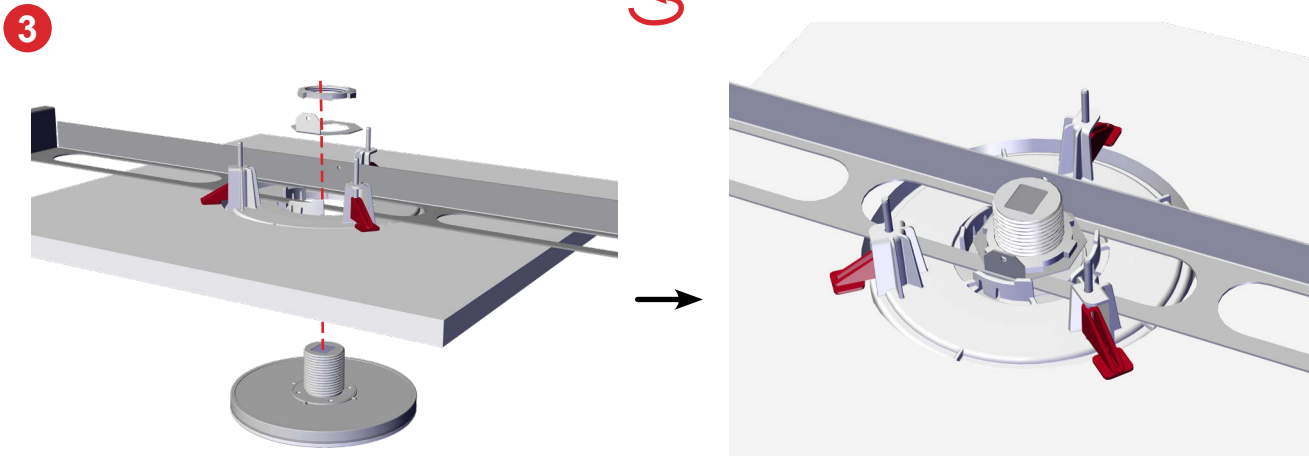
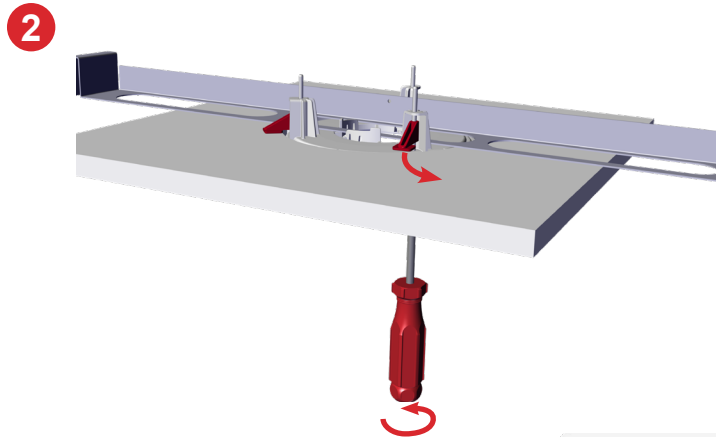
Notes:

1. Recessed mount option: place the spacer on the shaft (correct side up - fitting onto ribs in the mic) before inserting the TCM-X in the bracket.
2. Place the washer with a flat side against the upright of the tile bridge. Do not block the access to the hole in the strain relief tab.

Finish installation per the [Parlé TCM-X installation guide](#).



Bracket orientation in tile bridge opening



CONTACT US

Email: support@biamp.com

Warranty: biamp.com/legal/warranty-information

Web: support.biamp.com

Safety & Compliance: biamp.com/compliance

biamp.

A: 9300 S.W. Gemini Drive Beaverton, OR 97008 USA

W: www.biamp.com

20APR2022