



WEBSTATION

feels good does more

MANUAL

v1.02

D&R Electronica B.V., Rijnkade 15B, 1382GS Weesp, The Netherlands

Phone: +31 (0)294-418014, Fax: +31 (0)294-416987, Website: <http://www.d-r.nl>,

E-Mail: mail@d-r.nl

1 Contents

1	SOFTWARE INSTALLATION	5
1.1	WEBSTATION CONTROL	5
1.2	WEBSTATION METERS	6
1.3	WEBSTATION CONFIGURATION MANAGER	7
1.4	WEBSTATION VOIP	7
1.5	FIRMWARE UPDATETOOL	8
2	INTRODUCTION MIXER UNIT	9
2.1	MIC / LINE MODULES 1-3	9
2.2	USB / LINE MODULES 4-7	9
2.3	VOIP/ LINE MODULE 8	9
2.4	MASTER SECTION	9
2.5	SOFTWARE	9
3	SIGNAL FLOW	10
4	WEBSTATION BACKPANEL	11
4.1	MASTER CONNECTORS	11
5	MIC / LINE INPUT MODULES 1-3	12
5.1	GAIN	12
5.2	STEREO LINE	12
5.3	MIC	12
5.4	EQUALIZER	12
5.5	CUE/COMMUNICATIONS BUSS	12
5.6	ON	12
5.7	VOICE TRACK BUSS	12
5.8	FADER	12
5.9	INPUT CONNECTOR	13
5.10	INSERT	13
5.11	MICROPHONE INPUT	17
6	USB / LINE INPUT MODULES 3-4-5	14
6.1	GAIN	14
6.2	STEREO LINE	14
6.3	USB	14
6.4	CUE/COMMUNICATION BUSS	14
6.5	ON	14
6.6	FADER	14
6.7	SETTING UP THE USB MODULES	14
6.8	USB OUTPUTS	14
6.9	SETTING UP THE MODULES	15
7	VOIP / LINE INPUT MODULE 6	16
7.1	WHAT IS A TELEPHONE HYBRID?	16
7.2	VOIP CHANNEL	16
7.3	GAIN	16
7.4	LINE / VOIP INPUT SWITCH	16
7.5	VOIP SEND	16
7.6	CONNECT	16
7.7	CUE	16
7.8	ON	17
7.9	FADER	17
7.10	INPUT CONNECTORS	17
8	MASTER SECTION	18
8.1	LEDBAR METERS	18
8.2	NONSTOP	18
8.3	PHONES	18
8.4	CUE RESET	18

8.5	CRM SECTION	18
8.6	METERING	19
9	MASTER BACKPANEL CONNECTORS	20
9.1	CRM SEND	20
9.2	MASTER (SEND)	20
9.3	MIC ON	20
10	SET-UP ROUTINES MODULE 1-3	21
10.1	SETTING UP AN INPUT CHANNEL	21
11	SET-UP ROUTINES MODULE 6 (VOIP)	22
12	WEBSTATION CONFIGURATION MANAGER	23
12.1	INTRODUCTION	24
12.2	CONNECTION & SETUP	24
12.3	COMMUNICATION	24
12.3.1	REMOTE HOST	24
12.3.2	PORTS	24
12.4	MODULE SETTINGS	25
12.4.1	POWER ON ACTIVE	25
12.4.2	AUTO CUE RESET	25
12.4.3	ON AIR BUSSES	25
12.4.4	SWITCH COLOURS	26
12.4.5	CRM FEEDBACK PREVENTION	26
12.4.6	MICROPHONE	26
12.5	MASTER SETTINGS	27
12.5.1	SILENCE DETECTION	27
12.6	READ WRITE CONFIGURATION FROM/TO CONSOLE	28
12.6.1	STORE INTERNAL	28
12.7	CONFIGURATION PRESETS	28
12.7.1	CREATE PRESETS	28
12.7.2	LOAD PRESET	28
13	WEBSTATION METERS	29
13.1	INTRODUCTION	30
13.1.1	ANALOG AND DIGITAL CLOCK	30
13.1.2	PPM METERS	30
13.1.3	SILENCE DETECTION	30
13.1.4	MIC ON TIMER	30
13.1.5	SETTINGS	31
13.1.6	ONLINE INDICATOR	31
13.1.7	CONSOLE SIGNALS	31
13.1.8	MODULE STATUS	31
13.1.9	ON SWITCH	32
13.1.10	SOURCE SELECT	32
13.2	SET UP	32
14	UNDERSTANDING INTERNET RADIO	33
15	TECHNICAL SPECIFICATIONS	34
15.1	SPECIFICATIONS	34
15.2	DIMENSIONS	35
15.3	SUMMARY	35
15.4	ELECTROMAGNETIC COMPATIBILITY	36
15.5	DECLARATION OF CONFORMITY	36
15.6	PRODUCT SAFETY	36
15.7	CAUTION	36

Dear Customer,

Thank you for choosing the d&r webstation mixer.

The webstation was designed by radio broadcast professionals along with the d&r design team and is intended to be used 24 hours per day as an “on-air” mixer and/or a production console in the most demanding production room.

We are confident that you will be using the webstation mixer for many years to come, and wish you much success.

We value suggestions from our clients and would be grateful if you could email us with your comments when you are familiar with the webstation mixer.

We learn from the ideas and suggestions of customers like you and appreciate your time taken to eventually do this.

And... we always appreciate nice studio pictures with the webstation in use to include on our website.

Please mail them to mail@d-r.nl

with kind regards,

Duco de Rijk

MD

1 SOFTWARE INSTALLATION

- 1) Download the latest software and/or firmware from the D&R WIKI page:
<http://www.d-r.nl/wiki/dokuwiki/index.php>
- 2) Software Installation
 - Doubleclick the executable (.exe) file and follow the instructions on the screen.
- 3) Firmware update
 - Install the new firmware with the D&R Firmware Updatetool (See chapter 1.5)

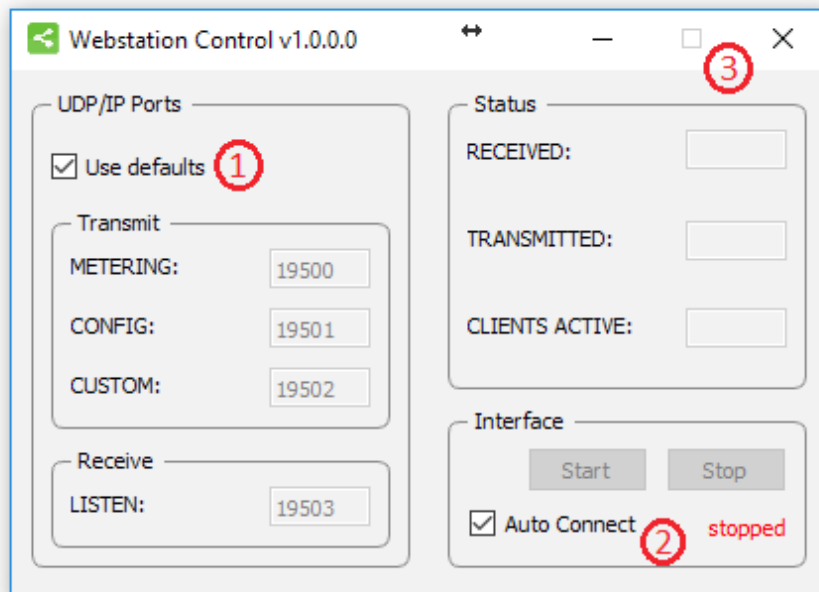
1.1 Webstation Control



Webstation Control is required to install to provide a communication interface between the Webstation console and other applications (i.e. Webstation Meters).

The application runs at the background and connects to the console automatically when its USB-main port is connected to the PC.

- 1) Double click on **Webstation Control vx.x.x.x – Setup.exe**
- 2) Follow the installation instructions on the screen
- 3) If installation was successful you will see the **Webstation Control** icon in the taskbar
- 4) Right-click on the icon and click on *Settings*
- 5) Make sure the two checkboxes are checked and close the window
- 6) Connect the USB-main port of the console with the PC
- 7) **Webstation Control** automatically starts running when a console is connected:

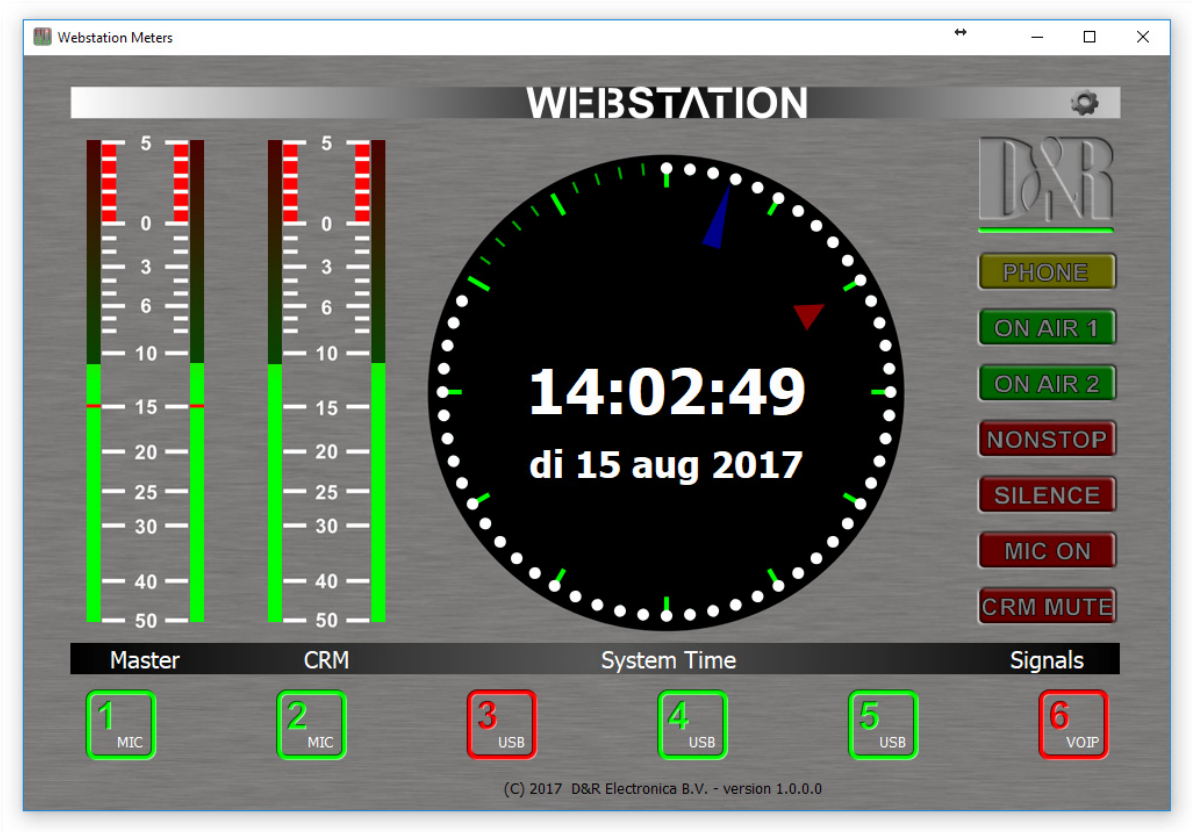


1.2 Webstation Meters

Webstation Meters is an application which shows metering levels and states of the Webstation console.

The six buttons in the lower section of the meter screen indicate which source is selected and are also functioning as the Channel ON switch when clicked with a mouse (or touch screen) The NONSTOP indicator can also be used as remote control by clicking on it.

- 1) Double click on **Webstation Meters vx.x.x.x – Setup.exe**
- 2) Follow the installation instructions on the screen
- 3) Double click on the icon on your desktop to run the application
- 4) Press the settings symbol in the upper right corner
- 5) Set remote host to: **127.0.0.1**
- 6) Check the **Use defaults** checkbox and press [OK]
- 7) A green line below the D&R logo indicates the application is online (receiving data)



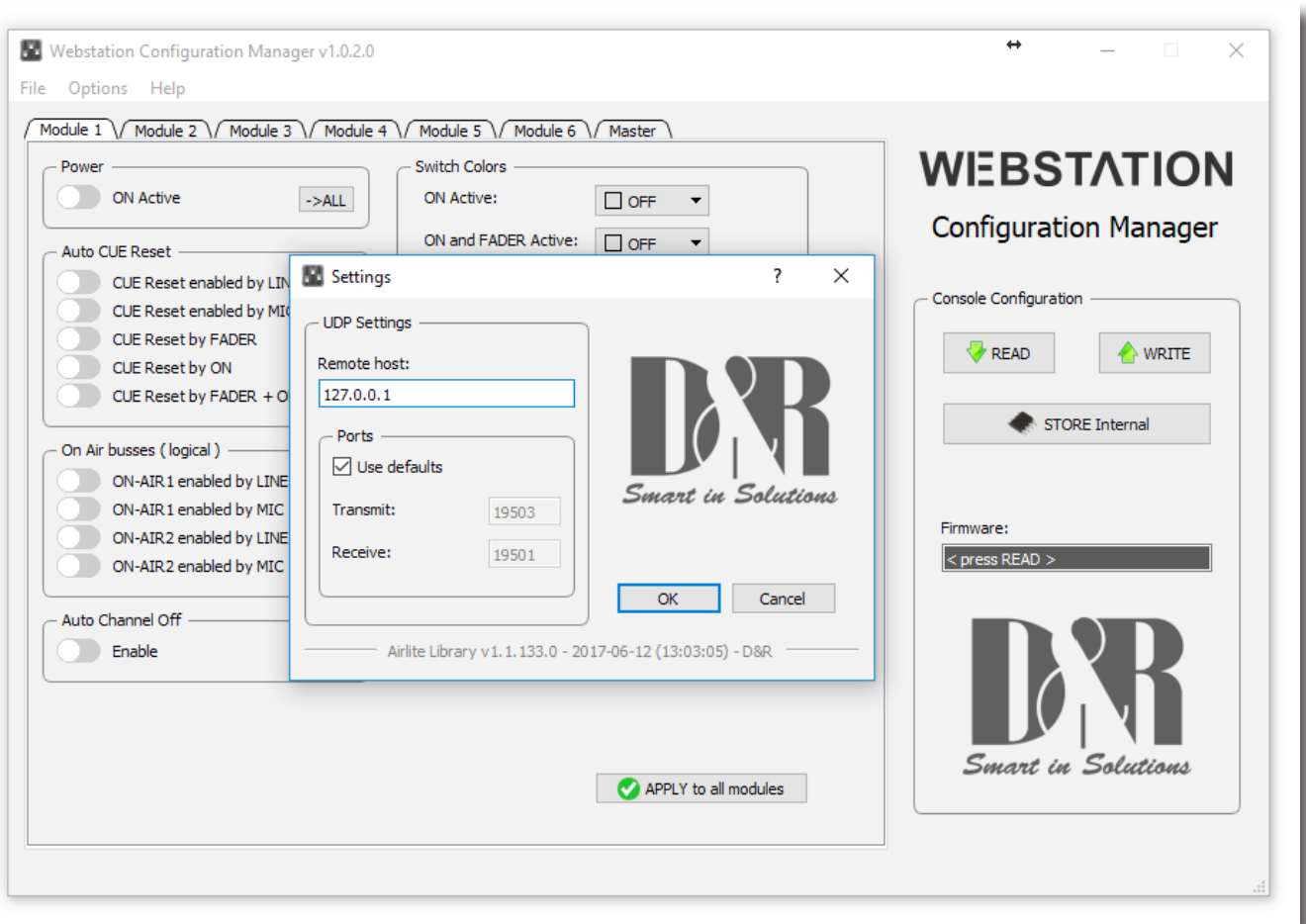
1.3 Webstation Configuration Manager



Webstation Configuration Manager can be used to read or write configuration settings from or to the Webstation console respectively.

The entire configuration can be saved or loaded as a preset-file from the **File** menu.

- 1) Double click on **Webstation Configuration Manager vx.x.x.x – Setup.exe**
- 2) Follow the installation instructions on the screen
- 3) Double click on the icon on your desktop to run the application
- 4) Press the **Options->Communication** from the menu bar:
- 5) Set remote host to: **127.0.0.1**
- 6) Check the **Use defaults** checkbox and press [OK]
- 7) Press [READ] to read configuration settings from the console.



1.4 Webstation Voip



Webstation Voip is an application which let you answer or end calls from a voip application (only Skype supported at the moment) with the [CONNECT] button on module 8 of the Webstation console.

- Double click on **Webstation Voip vx.x.x.x – Setup.exe**
- Follow the installation instructions on the screen
- The application runs automatically when the PC is started.

1.5 Firmware Updatetool

Firmware Updatetool can be used to update the internal firmware of the Webstation console.

The latest firmware can be downloaded from the D&R WIKI page:

<http://www.d-r.nl/wiki/dokuwiki/index.php>

- 1) Double click on ***Firmware Updatetool vx.x – Setup.exe***
- 2) Follow the installation instructions on the screen
- 3) Double click on the icon on your desktop to run the application
- 4) Make sure the console is in bootloader mode:
 - Power off the console
 - Press and hold on the CONNECT button (located in channel 8, VoIP)
 - Power on the console
 - Release CONNECT button
- 5) Select **D&R Webstation** from the device list
- 6) Select the firmware file (*.hex)
- 7) Press [UPDATE]
- 8) When update was successful a window similar as below will popup:

2 INTRODUCTION MIXER UNIT

The Webstation mixer is designed as an 6 channel ON-AIR/Production mixer with all features you need to make professional radio productions.

2.1 MIC / LINE MODULES 1-2

- 2x Professional extremely low noise balanced Mic pre-amps with 48 volt phantom powering on XLR.
- Two stereo line inputs.
- Every input with insert for processors.
- Gain control to adjust the incoming mic or line level.
- Two band stereo equalizer.
- Stereo CUE switch for pre fade listening.
- ON switch. (also voicetrack buss activation)
- 100 mm professional N-Alps fader with fader start.
- Stereo VCA fader control.

2.2 USB / LINE MODULES 3-5

- Input selectable between USB or stereo Line.
- Gain control for incoming signals.
- Stereo CUE switch for pre fade listening.
- ON switch.
- 100 mm professional N-Alps fader with fader start.
- Stereo VCA fader control.

2.3 VOIP/ LINE MODULE 6

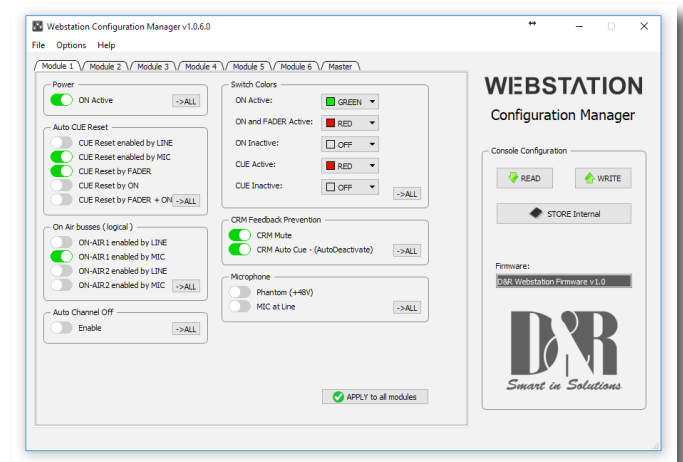
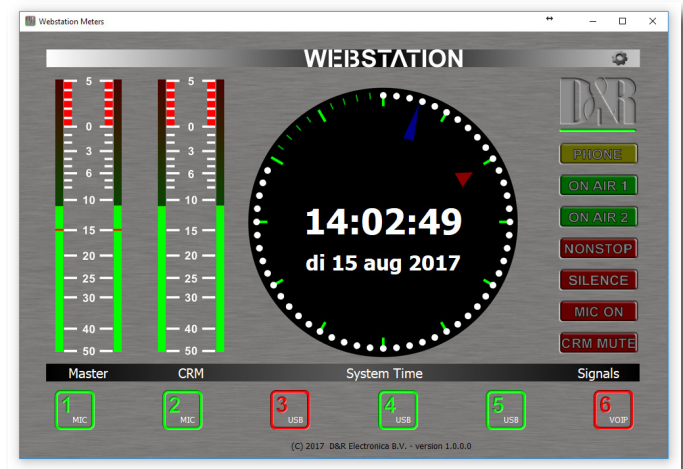
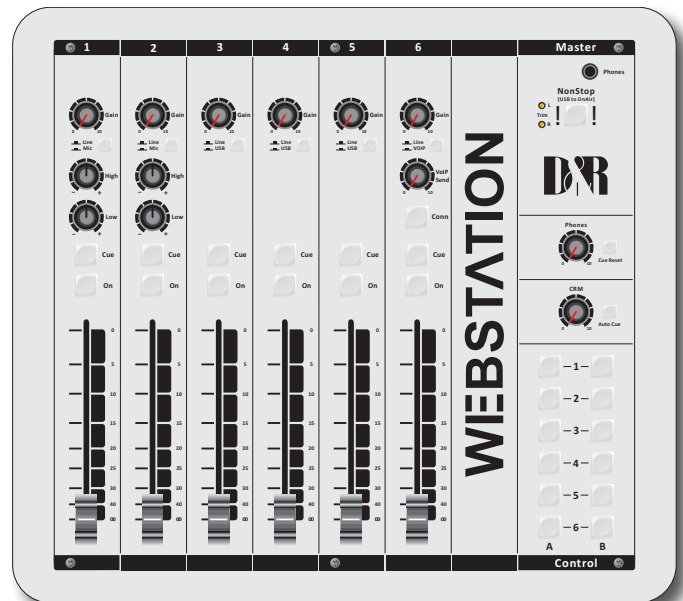
- Input selectable between VoIP or stereo Line.
- Stereo line input can be used for external Hybrid.
- Gain control for incoming signals.
- VoIP send control for outgoing level.
- Stereo CUE switch for pre fade listening.
- ON switch.
- 100 mm professional N-Alps fader with fader start.
- Stereo VCA fader control.

2.4 MASTER SECTION

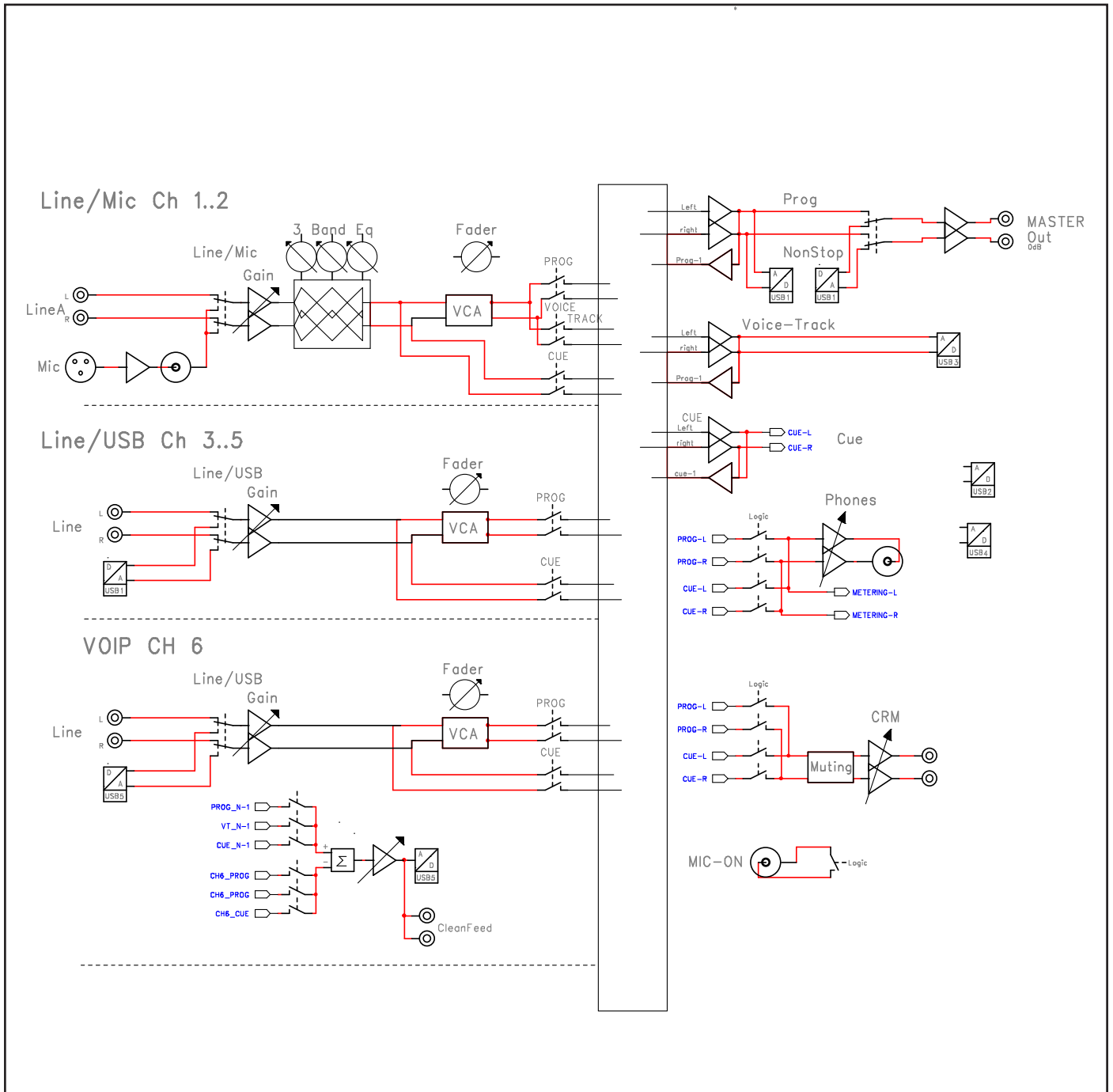
- Master controls for Phones/CRM
- CRM section with Cue Reset and Auto Cue.
- NON-STOP switch routes module 3 (USB stereo input) directly to the main program Cinch connectors.
- 12 free programmable control switches for music play-out systems.
- Built in Voice Tracking buss.
- Cue bus is also communication buss

2.5 SOFTWARE

- All Software is available from the D&R WIKI page: <http://www.d-r.nl/wiki/dokuwiki/index.php>
- All modules individually programmable
- Many Master functions individually programmable.
- USB control section allows play-out software to be controlled by the mixer.



3 SIGNAL FLOW

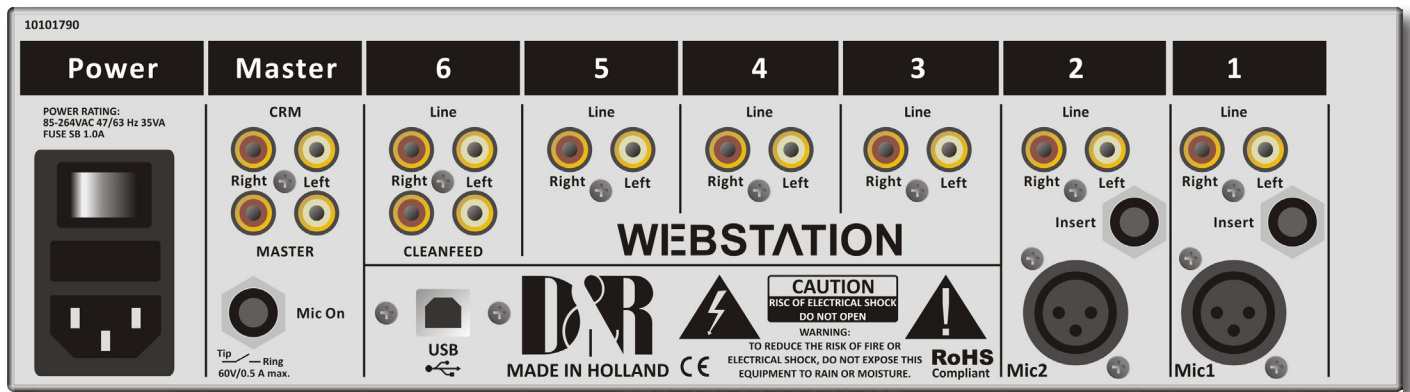


4 WEBSTATION BACKPANEL

The back panel shows all the in and output connectors to interface with your other equipment.

The first two of modules 1-2 MIC/LINE modules on the right have balanced XLR mic inputs with a mic insert for voice processing.

Two cinch connectors accept line level left/right input signals.



Modules 3-4-5 are the USB inputs that are fed from a built in USB HUB that accepts and sends stereo signals to a connected PC where a music play-out systems could be active.

There are also stereo line inputs available on Cinch connectors per input 3-4-5. (6)

The module backpanel also houses the USB connector for both the audio and the VoIP connection.

The USB connector carries all the 4 stereo audio signals to and from the PC (for both Windows & Macintosh computers) as well as the Play-out systems control info from the programmable Control section plus the Clock and meter information.

This USB feature will also allow you to connect to the Internet via your computer for "Live" streaming of audio to the Internet.

Module 6 (VoIP) has an extra stereo line input for external (analog) Hybrids and cleanfeed outputs to drive these external Hybrids in case a VoIP connection is not available or not yet installed. This external Hybrid needs to be returned on the line inputs of the same VoIP channel.

4.1 MASTER CONNECTORS

The master section houses all the in and outputs of the controls on the front panel that will be discussed in more detail in other chapters.

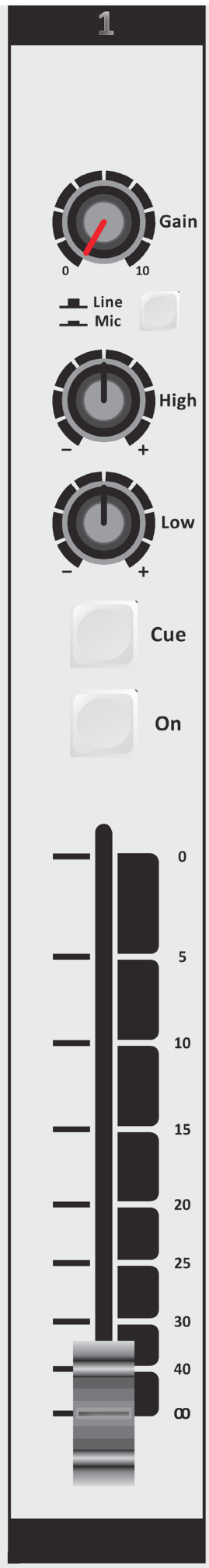
Most of the functions are self explanatory, such as master right and left Cinch connectors and CRM cinch connectors for your monitoring.

Below the 4 Cinch connectors you see a stereo jack that is called Mic On.

Here you connect your On-AIR light on the tip and ring to show your microphone is active.

Worth mentioning is the heavy duty external power supply that accepts voltages between 85 en 260 volts AC 50/60Hz.





5 MIC / LINE INPUT MODULES 1-2

The input modules switches & controls of the Webstationmixer have the following functions: Each of Modules 1 and 2 have two selectable inputs. The two types of inputs consist of a Microphone input and a stereo line input. In the lower Mic switch position, the module is a normal mono module. When the Mic is switched off (up position), you also have a stereo line level input to feed the stereo PROGRAM buss, CUE buss and Voice Tracking buss.

5.1 GAIN

With the gain control (the first control knob below the modules number), the source input level can be adjusted to the required internal mixer level. This control adjusts both the Mic input and the stereo line inputs with the same control depending on the switch position.

5.2 STEREO LINE

The stereo line input is a high impedance input (>10 kOhm) for connecting the stereo line level outputs of devices such as CD players/MP3 players etc.

5.3 MIC

The Mic input has a balanced XLR input connector with 48 volt phantom powering for condenser mikes.

The Mic-pre circuitry uses the latest technology studio-class components as used in high end recording consoles. We use the That 1510 Mic-pre which is highly acclaimed for its low noise/distortion and transparent audio. The low-noise design and excellent phase spec that D&R is known for is integrated throughout the Webstation which results in a phase coherent signal path. Using balanced microphones & cables allows for the quietest and high quality audio signals throughout your Webstation mixer. You can use standard balanced Mic cables available at any pro audio dealer or music store. The Webstation uses chassis-mount female XLR type Mic input connectors. Any standard pro audio Mic cable will fit into this female XLR connector.

5.4 EQUALIZER

Each module has a stereo two band equalizer to control the high and low frequencies individually. The D&R designers used carefully chosen frequencies in the equalizer circuitry to enhance the Mic input as well as the stereo line input.

5.5 CUE/COMMUNICATION BUSS

Below the LOW EQ potmeter is the stereo CUE switch (Pre Fade Listening).

This switch allows you to check the signal before you raise your channel fader up and mix it with other signals in the mixer. Another smart function is that this CUE bus can be used for communication. If you push a DJ's Cue (let's say channel one) and if you then push the Telco(VoIP) Cue (located in the TELCO(VoIP) module), the DJ as well as the caller can hear each other outside the broadcast and even you, sitting behind the desk on the monitor speakers. Note: *Levels need to be carefully set to avoid feedback and overdrive of circuits.* The Cue switch also sends out HID(Human Interface Device) signal over USB that can be programmed to do specific functions in your play-out system.

5.6 ON

The ON switch is used to pass on the audio. The ON switch also sends out HID signal over USB that can be programmed to do specific functions in your play-out system. In the Control section of the manual we will explain how.

5.7 VOICE TRACK BUSS

The ON switch is ALSO used to route an input signal from module 1-2 to the Voice track buss. Push the ON switch a little bit longer and the audio will be removed from the Program buss and assigned to the Voice track buss, as a result the ON switch will blink. The Voice track signal is routed to USB-3 for further processing in your play-out system.

5.8 FADER

Final audio level control is the high quality, 100 mm long throw N-Alps channel fader that send out a control voltage to the internal stereo VCA. The control voltage is also used to detect when the fader is moved up and can send out a pulse for fader start purposes. This control voltage activates the start circuitry that can be assigned to one of the two GPO connectors.

A software page (as already seen on the next page) will be shown further in this manual to customize the Webstation to your needs with instructions how to do that.

5.9 INPUT CONNECTORS

On the back of modules 1 and 2, you find four connectors for each module. The stereo line input uses Cinch female type connectors. Being un-balanced, the shield and (-) or out of phase signal wire need to be connected together and seen as ground during installation.

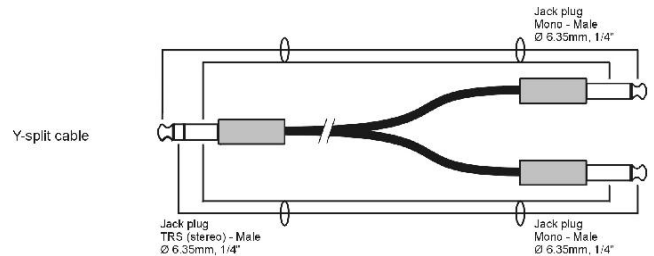
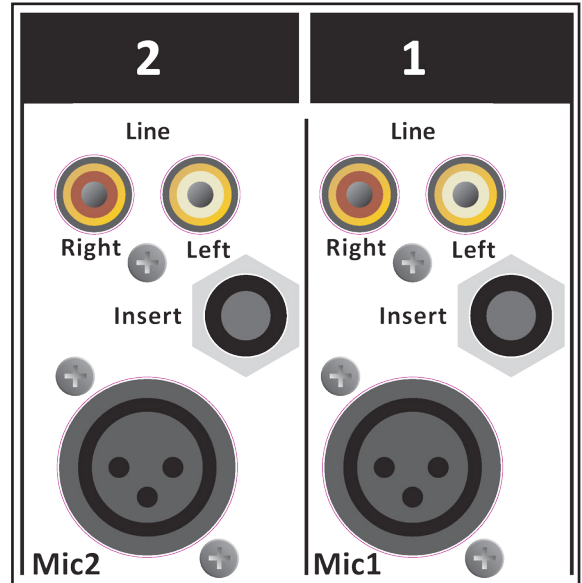
5.10 INSERT

This ring/tip/sleeve stereo jack socket lets you insert signal processors such as compressors/gates or special voice processing units to improve your voice timbre to become the ultimate announcer/D.J. The Ring of the stereo jack sends the PRE-FADER channel signal and the Tip accepts the return signal.

Below on the right you see the type of cable you need when your processor has jack in and outputs. Connect the tip from the stereo cable to the tip of one of the mono jacks and the ring of the stereo cable to the tip of the other mono jack.

Now insert the stereo jack into the Webstation's insert and connect the mono jack that produces a hum when the tip is touched by your finger (and the related channel fader is open) into the processors output. The other mono jack should be inserted into the processors input.

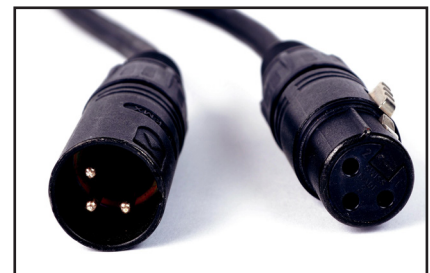
In case your processor has XLR inputs connect the tip of the stereo jack to pin 2 of the Female XLR and short pin 1 and 3 with each other and connect to ground (sleeve). This also goes for the other Male XLR. Connect the ring of the stereo jack (which sends signals) to a male XLR pin2. Short here pin 1 and 3 and solder to ground (sleeve). This has to be done because the insert is not balanced. See below the cable type you need.

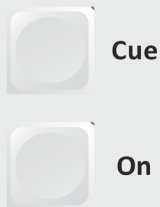
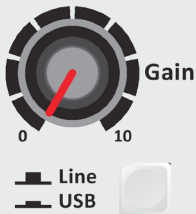


5.11 MICROPHONE INPUT

The Mic input is a balanced female XLR type connector, see the left connector below that should go into your mixer and your mic cable should end in a male XLR as seen on the right section of the picture.

- 1=Ground/shield
- 2=Hot (in phase)
- 3=Cold (out of Phase).





6 USB / LINE INPUT MODULES 3-4-5

The input modules switches & controls of the Webstation mixer have the following functions: Each of Modules 3 thru 5 have two selectable inputs. The two types of inputs consist of an USB input and a stereo line input. In the lower USB switch position, the module is a stereo module. When the USB is switched off (up position), you also have a stereo line level input to feed the Master buss, Cue buss and Voice tracking buss.

6.1 GAIN

With the gain control (the first control knob below the modules number), the source input level can be adjusted to the required internal mixer level. This control adjusts both the USB input and the stereo Line inputs with the same control depending on the switch position.

6.2 STEREO LINE

The stereo line input is a high impedance input (>10 kOhm) for connecting the stereo line level outputs of devices such as CD players/MP3 players etc.

6.3 USB

The USB stereo signal comes directly from one of the 3 stereo USB channels from your PC play-out software. These are already assigned in the Mixer to module 3, 4 and 5 by D&R.

6.4 CUE/COMMUNICATION BUSS

The stereo CUE switch (Pre Fade Listening) allows you to check the signal before you raise your channel fader up and mix it with other signals in the mixer. Another smart function is that this CUE bus can be used for **communication**. If you push a DJ's Cue (let's say channel one) and if you then push the Telco Cue, the DJ as well as the caller can hear each other outside the broadcast and even you, sitting behind the desk on the monitor speakers. Note: *Levels need to be carefully set to avoid feedback and overdrive of circuits.* The Cue switch also sends out HID signal over USB that can be programmed to do specific functions in your play-out system. In the Control section of the manual we will explain how.

6.5 ON

The ON switch also sends out HID signal over USB that can be programmed to do specific functions in your play-out system. In the Control section of the manual we will explain this how.

6.6 FADER

Final audio level control is the high quality, 100 mm long throw N-Alps channel fader that send out a control voltage to the internal stereo VCA. The control voltage is also used to detect when the fader is moved up and sends out a pulse for fader start purposes.

In the software set up there is a setting where you can select if you want and extra 10dB of fader gain. Then the unity gain position will be at the -10dB position. If you are a person that sweeps the fader fully up and down, then do not select the extra fader gain of 10dB and choose for a unity gain position in the fully up position of the fader. A software page will be shown further in this manual to customize the Webstation to your needs with instructions how to do that.

6.7 SETTING UP THE USB MODULES

Actually there is not so much you can do concerning routing of the incoming USB signals. The ON switches connect the incoming stereo signals sent by the play-out system 1-3 to channel 3, 4 and 5. The routing inside the PC software is done automatically and described in more detail below. In the Block diagram (in the brochure and in this manual) you can see that the mixers USB output signal 1 (all stereo) is the program signal and sent to the USB-1 buss. It is a PROG POST signal, it means a post channel stereo fader signal is sent to the USB connector and to your PC.

6.8 USB OUTPUTS

There are 4 stereo USB signals sent to your PC through the USB connector on the back of your console.

- USB-1 = Main program signal.
- USB-2 = Clean feed
- USB-3 = Voice track signal
- USB-4 = VoIP signal

An audio application needs to run on your PC to be able to see the levels. Otherwise trial and error is the only way. A free downloadable tool can be found here <http://minorshill.co.uk/pc2/testgen.html> The return USB signal coming from the PC is fixed but can be adjusted with the webstation's module gain controls.

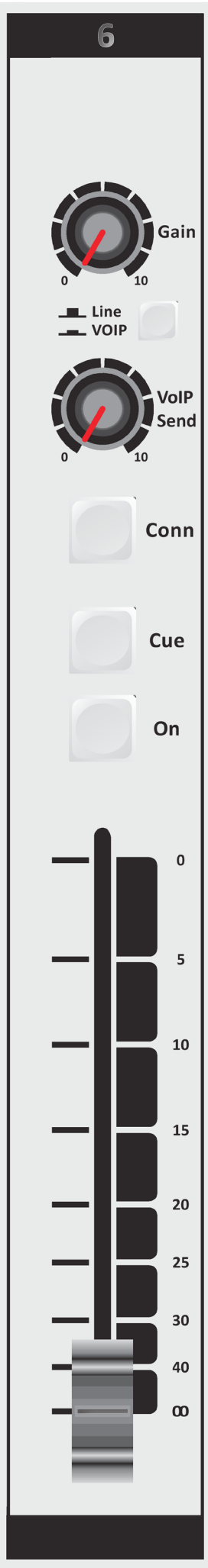
6.9 SETTING UP THE MODULES

In order to set up a connection between your computer and the Webstation-USB mixer, only use the USB cable that is part of the shipment. When connecting the Webstation to your computer, the computer (PC or Mac) will recognize the Webstation as new hardware and will establish a connection to any audio programs needing audio hardware.

After establishing a connection, there is no need to download drivers or performing complicated setup routines, just plug in the USB cable to your Windows or Mac computer and start tracking! (or playing a maximum of 3 stereo channels at the same time).

If you want to know more about USB try this link http://en.wikipedia.org/wiki/Audio_Stream_Input/Output

If you are already familiar with digital audio recording, the latest versions of Kristal Audio Engine and Audacity are available free of charge via the Internet. [Use this link http://www.asio4all.com/](http://www.asio4all.com/) for third party downloads.



7 VOIP / LINE INPUT MODULE 6

Input module 6 is a dedicated Voice over IP Telephone module and also has a stereo line input in case a classic Hybrid is needed.

Highlights are:

- * High quality Telephone Hybrid circuit to directly connect to the Internet.
- * Stereo line input.
- * Gain control.
- * VoIP/Telco send Control.
- * Direct access CONNect switch.
- * Stereo CUE switch for pre fade listening.
- * Start (ON) switch and 100mm smooth professional fader.

7.1 WHAT IS A TELEPHONE HYBRID?

Telephone hybrids are hardware interfaces between professional audio equipment and public telephone networks. They provide protection for your equipment and the public telephone lines, allowing for various line signals and line conditions. Automatically canceling out the unwanted signal, they facilitate two-way communication when using a single 2 wire telephone line. A Webstation VoIP module has the common webstation's USB connector and a stereo line in cinch connector to return a classic analog or digital Hybrid. These Hybrids are used in radio and television broadcasting facilities around the World allowing external callers to be connected to the studio mixer for live broadcast. Many of the D&R Telephone Hybrids are supplied to radio stations allowing extremely effective conversion between 4-wire audio circuits and standard 2 wire telephone lines.

7.2 VoIP CHANNEL

In the Webstation we have built in an interface that lets you connect to the Internet community by way of (for instance) Skype. Skype is freely available communication software that can be used to call and receive calls of your listeners to your broadcast station. This runs together with the audio usb signals and control signals to the same PC as the Play-out system is installed.

For downloading the SKYPE software go to <http://www.skype.com> and then to your own language for more support. There are some SKYPE software settings you need to go through before this is working with your console. For some usefull instructions go to:

<https://support.skype.com/nl/faq/FA34541/een-perfect-skype-gesprek-voeren>

(Dutch instruction video, but I am sure there is one in your own language or in English of course).

7.3 GAIN

With the GAIN control, the source level is adjusted to the internal mixer level. This is for both the VoIP and the Stereo Line input (when selected).

7.4 LINE / VOIP INPUT SWITCH

When switched to the VoIP position only the VoIP signal is received. When this switch is up, you have a high impedance stereo line level input for connecting an external Hybrid or cart machines, iPods, tape machines, CD players etc.

7.5 VOIP SEND

With this level control the outgoing signal from the mixer is sent to the caller via Skype or to an external connected Hybrid. This is for both the VoIP and the Stereo Line input (when selected). This Hybrid gets its send signal from the cleanfeed output on the back of the console.

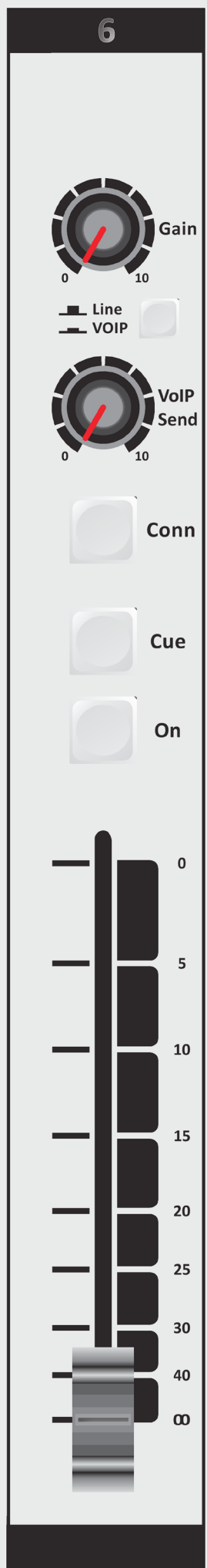
7.6 CONNECT

This switch (when pushed) picks up the VoIP/Hybrid signal when a call comes in.

Note: the incoming call will not be heard until the CUE is pressed or the ON switch and the fader are activated which brings the signal to the mixer. You can of course have a handset with dial possibility to dial and pick up calls from the caller first before you connect the caller to the mixer by pushing the CONNect button. To hear the caller you have to push the CUE button and to bring the caller on-air push the ON switch and pull up de fader.

7.7 CUE

Next you will see the stereo CUE switch (Pre Fader Listening). This switch allows you to check the signal before you mix it with your other channel signals in the mixer. A second very important function is that this Cue buss is also designed to be a N-1 communication buss. It means that a caller hears any signal connected to this Cue buss except his own signal. So communication between a DJ channel and the caller is possible without having to mix in the DJ channel and the caller in the broadcast.



7.8 ON

The ON switch is used to activate the module. There are 3 colours that you can choose from in different states of the ON switch.

On Active = red, green or off

On+Fader Active = red, green or off

On not active = red, green or off

7.9 FADER

Final control of the channel is the 100mm long throw N-Alps channel fader with integrated fader start function. The channel fader sends the amount of signal from the associated channel to the master mix buss. There is no audio going through the fader, just a DC control signal driving a stereo VCA, so fader noise will never happen in this design.

At the right side of the fader you see a dB labelling starting at the top with no attenuation (0). Sliding down it attenuates in steps of 5dB until it reaches a full cut off below -90dB. When you are used to fully throw the fader in its top position when opening a channel it is advisable to set the fader gain software setting to 0dB (factory default). If you need a little bit of "playground" for your audio, set the software-jumper to +10dB fader gain and see the -10dB (10) position as your unity gain position.

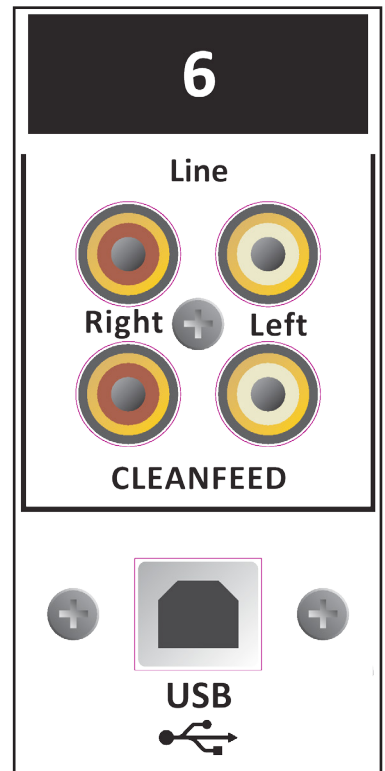
7.10 INPUT CONNECTORS

On the back of the WEBSTATION VoIP module you find four connectors. Two unbalanced stereo line RCA Cinch connectors for connecting CD players, iPods, or any play-back devices as long as they are line level equipment. The level can be set using the gain control to match most source levels. The left RCA/Cinch connector is the right input and the right RCA/Cinch connector is the left input. The shield needs to be connected to the ground or case of the RCA/Cinch connector.

The two unbalanced stereo line RCA Cinch connectors labelled CLEANFEED can be used to connect the Module to the input of an external connected Telephone Hybrid such as D&R's Hybrid-1 or 2 or the TELCOM unit. The output of the Hybrid should be connected to the stereo line input to return the signal from the caller into the mixer. For adjustments follow the manual of the Hybrid.

A cleanfeed sent signal (presented on the back of this module) is a mix of all signals that are present in the mixer except the signal that is processed in this VoIP channel to avoid feedback.

In case you use a classic Telephone Hybrid to connect with your listeners, separate telephone equipment should be used to dial the caller and interface with the landline telephone system.

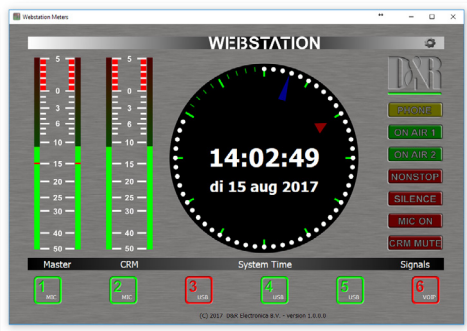


8 MASTER SECTION

The Webstation master section houses all the controls for the outgoing signal and communication signals. Individual functions are described below in sections as shown on the front panel on the right.

8.1 LEDBAR METERS

The master section does not have ledbar metering. A beautiful software metering is part of the package with four meters with peak reading ballistics. Depending on which switch is pressed (CUE on channels or Master Program signal). The attack and release time constants conform international PPM standards, being 10 mSec for attack and 1.5seconds (per20dB) for decay. The green area of the LEDbar is the safe area and occasionally a red led on is no problem. The output level of your Webstation is designed to be 0dBu (775mV) ("0" VU) when the 0 green LED is on.



8.2 NONSTOP

The Non Stop switch is a very convenient function when you want to use your mixer while you are NON STOP on-air. By activating this switch USB channel 3 sends its signal directly to the master Cinch outputs, making your mixer completely free for production. Two Trimmers are available to even out any level differences between Non Stop mode and On-Air mode to make a convenient switch between these two modes.

8.3 PHONES

The phones output (located on the front panel) automatically switches between Main Program outputs and CUE from any input module or from the Master section. Normally the left/right output is heard until a Cue switch is activated from anywhere in the console. By pressing a CUE switch, you will hear the associated signal rather than the left/right signal in the PHONES. The software meter application switches accordingly with this action.

We advise you to use headphones with an input impedance NO LOWER THAN 32 Ohms to avoid mismatch or distortion. An 8-32 Ohm set of headphones will produce distortion when cranking up the level of the Webstation too high due to the fact that the impedance load is too low. If you must use 8-32 ohm phones, a small power amp should be used to power the phones. It is a load equivalent to the load that loudspeakers normally present to power amps. The Webstation has no power-amp built in, sorry.

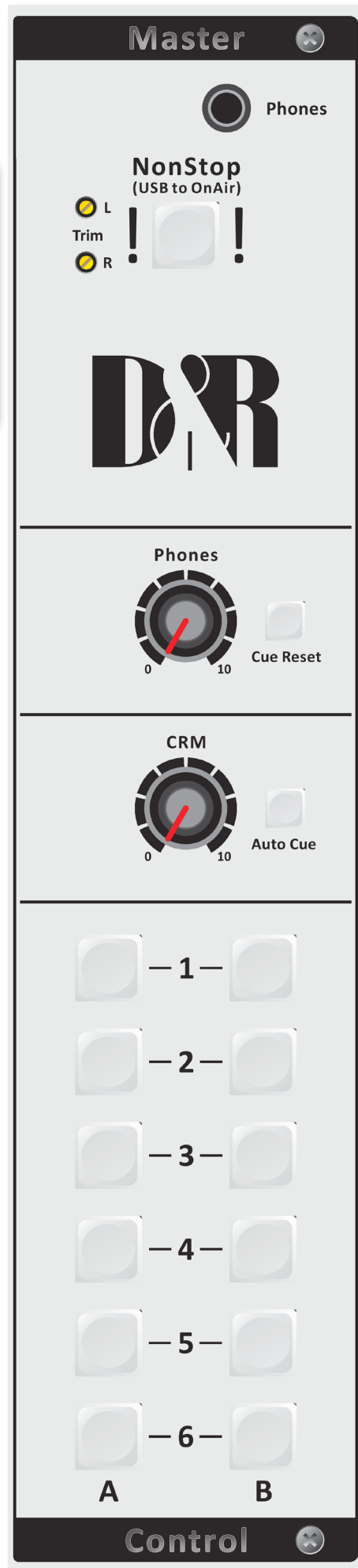
8.4 CUE RESET

The Cue reset button alongside of the Phones volume control resets all active Cue selections in one go. So you do not have to switch them off individually.

8.5 CRM SECTION (Control Room Monitor)

The CRM control is normally fed by the master outputs. In case a CUE switch is activated the CRM output switches automatically to the selected CUE signal. In case you do not want the CRM output to be switched automatically to CUE disengage this function by deactivating the Auto Cue. The CRM signal can also be used for an extra stereo output for recording or a sound system.

mic channel's CUE and the caller's CUE and now both can talk with each other. The Talkback level can be adjusted by the TB level control just below the Non-Stop switch.



8.6 METERING

Part of the total Webstation package is a software meter application and clock as seen below.

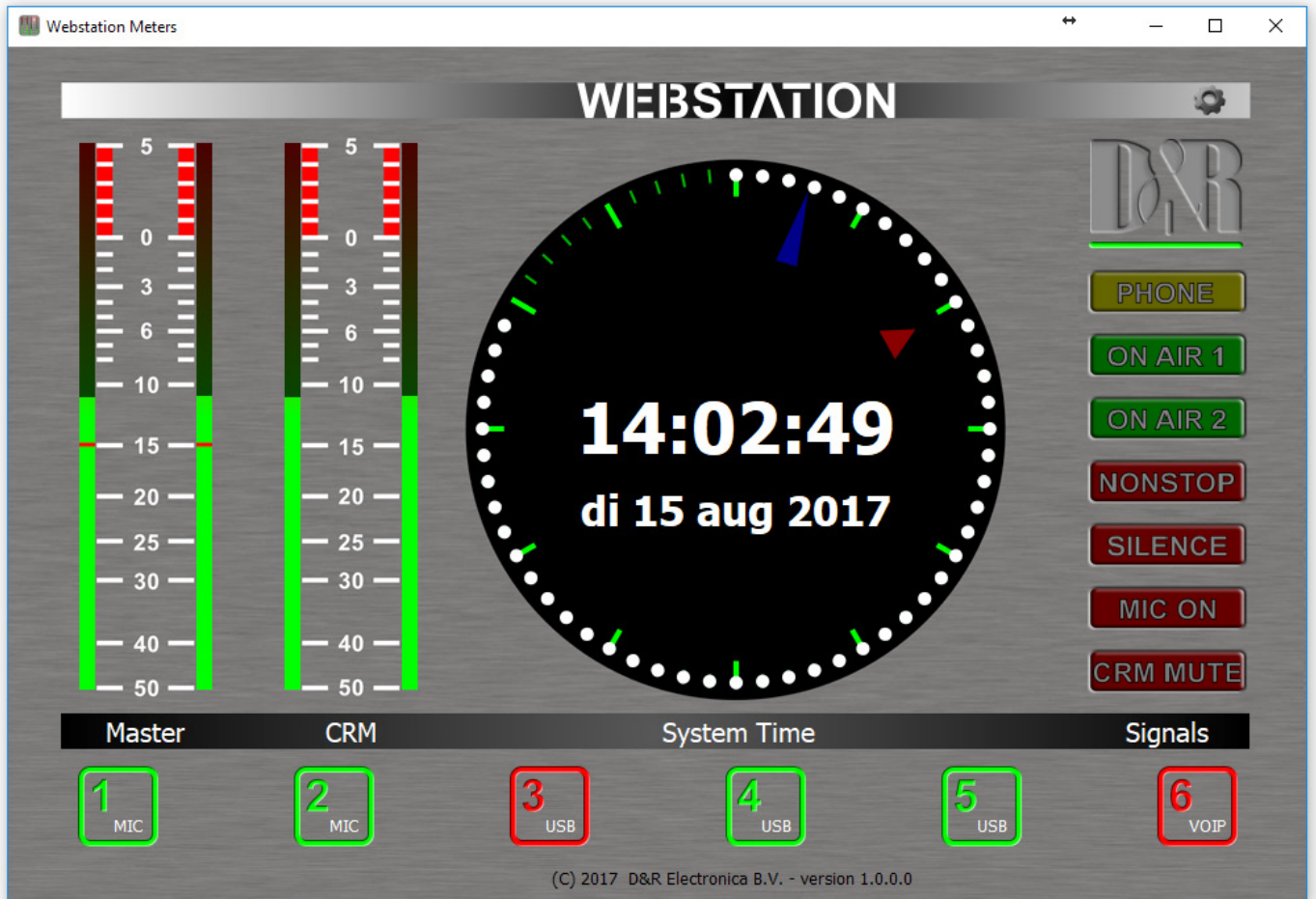
All data is transported over the single USB 2.0 connection. An accurate clock time is taken from the local PC.

The left stereo meter always shows the Master output, the right stereo meter shows the CRM output level following every signal selected by the CUE switches.

On the right hand side of the display you see signalling functions of some important functions in this mixer.

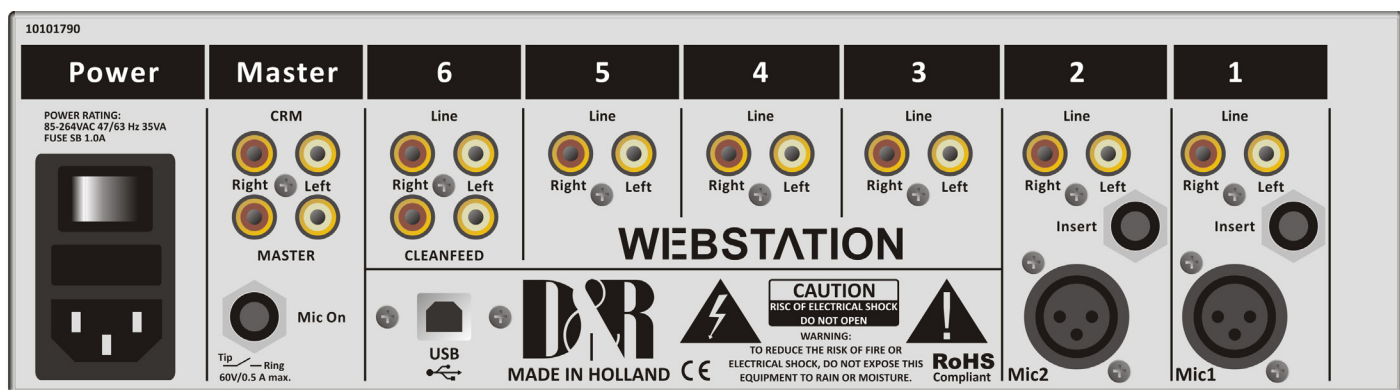
When the ON-AIR 1 or 2 sign is activated. The NON-STOP switch is active when a Silence is detected in the program signal, a Mic is on(active) or the the CRM is muted.

On the bottom of this display you can monitor the status of all the input channels; whether they are active, off or standby and also if the source is selected.



9 MASTER BACKPANEL CONNECTORS

The master connector panel houses 12 RCA/Cinch connectors, 2 jack sockets, 3 male XLR connectors and 2x USB connector. There is one power supply connectors. From left to right we will describe the functions and features of the master connector panel as seen below in detail.



POWER CONNECTOR

This Euro connector accepts an AC voltage in between 85 volts and 260 volts at 50/60Hz.

9.1 CRM SEND

The CRM (Control Room Monitor) outputs are on two RCA Cinch connectors carrying the signal coming from the CRM volume potentiometer on the front panel and its associated source selection. The level is 0 dBu (0.775 volt).

You can connect the inputs of active monitors to these Cinch connectors.

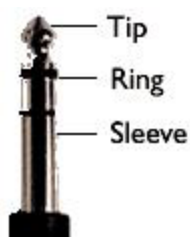
9.2 MASTER (SEND)

The PROG (Program) outputs are on two RCA Cinch connectors. This is also the case when the NON STOP ON-AIR switch is activated. Then these main Cinch connectors carry the USB-3 signal.

9.3 MIC ON

Directly beneath the MASTER cinch connectors is a stereo jack socket (Mic On) that can control a red light indicator. This stereo jack is connected to an OPTO-FET. This FET switch is capable of controlling external Red light circuits as long as it doesn't take a higher voltage than 24 volt and the current doesn't exceed 50 mA!

NEVER CONNECT 115/230 AC VOLTAGE TO THIS JACK!!

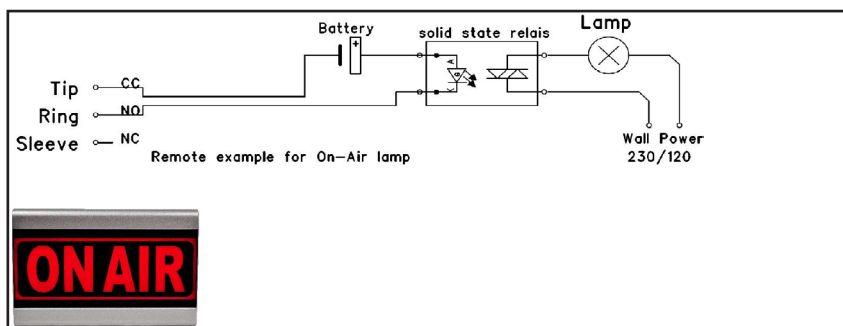


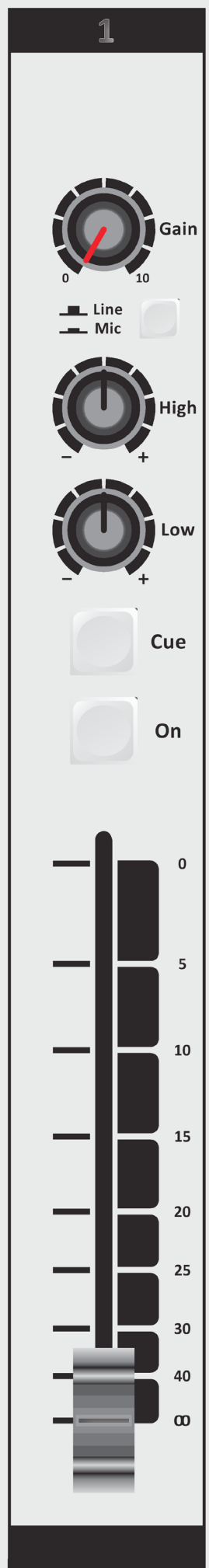
Start / Mic-On Jack

	Functions Opto coupler
Tip	Connected to opto-coupler
Ring	Connected to opto-coupler
Sleeve	Not connected

Our D&R ON-AIR warning light can be connected directly to the MIC-ON jack socket between tip and ring by way of a simple 2 wire connection, see the manual of the ON-AIR light. The ON-AIR led light has its own external 12volt DC power adapter.

Below you see a circuit for ON-AIR lights that need AC power.





10 SET-UP ROUTINES MODULE 1-2

- Connect a power-amp, recorder, or transmitter to the Master left/right main outputs.
- Connect a high impedance (NOT BELOW 32 Ohm) headphone to the “phones” jack socket on the master section.
- Connect a microphone or line level equipment.
- Now, connect turntables (with built in RIAA pre-amps), CD players, and jingle machines.
- Connect a red light indicator to the master section’s Mic On jack when there is a need for it.
- Now with everything connected, follow the adjustment procedure.
- Note; for mikes, only activate the grey Mic switch, for line level, leave this switch up.
- Put on your headphones and turn the headphone volume control to the “12 o’clock” position.
- Set all the gain-controls to its minimum.
- Set all equalizer-controls to the “12 o’clock” position.
- Connect your mains power cable and switch the console on, on the back panel.
All switches will light for a short moment and the NON STOP will stay on.

10.1 SETTING UP AN INPUT CHANNEL

Push the CUE switch in a channel that is connected to a source. Now slowly turn the GAIN control clockwise until you hear and see the input signal on the Screen metering on your TFT display. You can change the input sound by adjusting the equalizer-section. If you adjust the equalization, once again check the level on the meters, because increasing specific parts of the frequency spectrum can easily add more gain to the signal.

The meter indication should be between -6 dB and +3 dB to get a proper level on amplifiers or your main out processor. The screen metering is a PPM meter indicating the absolute level that enters the console. It is calibrated to indicate 0 dB on the scale corresponding with a 0 dBu output level. Release the CUE switch so the metering can now read the output signal again. Now push the ON button to connect the input signal to the fader.

Now move the fader to the “10” position screened alongside the channel faders or to the 0dB indicator if you have cancelled the extra 10dB fader gain in the software. Further volume adjustments can be made on the equipment your signal is send to, such as power-amps or transmitters. The other inputs are similarly adjusted, using the “CUE” switches to (pre fade) listen to the connected sources. Use the input gain for regular gain adjustments to create a convenient gain range to work with. Be carefully not to place the Webstation near heavy power transformers such as in power amps. Although the Webstation is constructed using a thick metal frame, this could cause hum.

SETTING UP THE USB MODULES

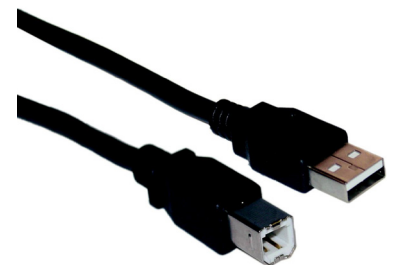
Input modules 3 to 5 are also capable of accepting stereo USB signals from a PC where you have play-out software running. To be able to set up a connection with your PC, use a standard USB cable as supplied by us (See picture).

When connecting the Webstation to your computer, the computer (PC or Mac) will recognize the Webstation as new hardware and will establish a connection to any audio programs needing audio hardware. Also all 3 stereo channels will be automatically put in a natural sequence of 1 to 3. After establishing a connection, there is no need to down-load drivers or perform complicated setup routines. Just plug in the USB cable to your Windows or Mac computer and start tracking/playing! If you first want to know more about USB try this link http://en.wikipedia.org/wiki/Audio_Stream_Input/Output

If you are already familiar with digital audio recording/process- ing, the latest versions of Kristal Audio Engine and Audacity are available free of charge via the Inter- net.

Use this link for third party downloads:

<http://www.asio4all.com>



11 SET-UP ROUTINES MODULE 6 (VoIP)

If you have already connected the USB cable for your play-out software, the VoIP connection is also available. Install for instance SKYPE on you PC and set up an account according to the instructions of the SKYPE software.

Once the dialed person has taken the call or you have answered the call, inside the SKYPE application you can talk to him via the CUE switches or make a connection outside the broadcast by first pushing the Conn switch and then pushing both the CUE switch of your DJ channel and the VoIP channel.

If you want someone else to talk to him or her prior to the broadcast push any CUE button and communication is established.

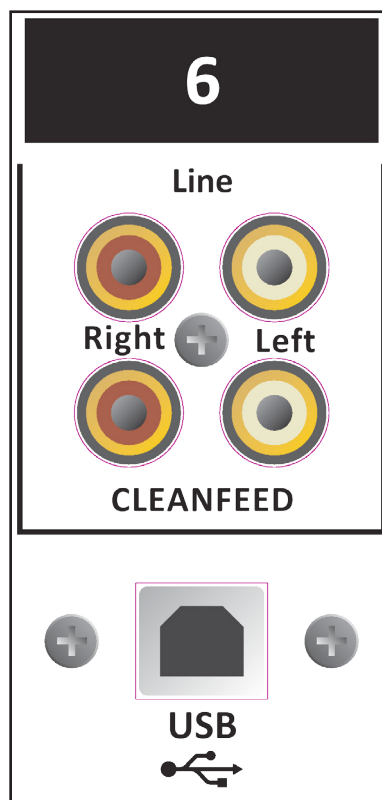
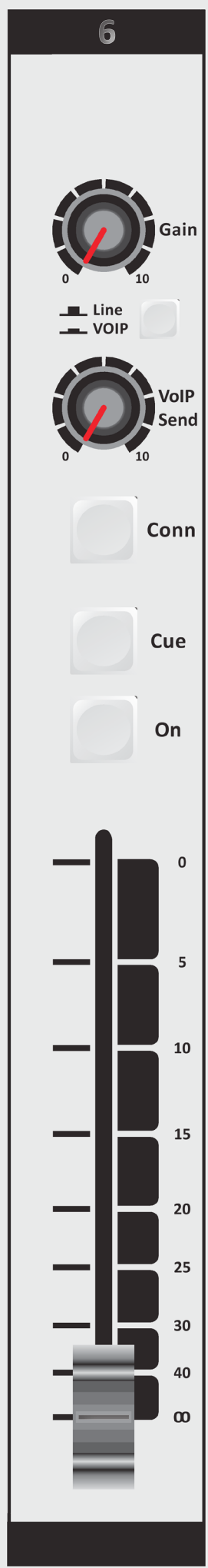
As a start, position both VoIP send and gain potentiometers in the 12 o'clock positions. Adjust when needed. An incoming call is picked up by pushing the CONN button. If you want to hear the caller, press the CUE button in the same channel to listen to the incoming call. Adjust the Gain control to get a good input level from the telephone line. To be able to talk to the caller press CUE in your DJ channel. Adjust the VoIP send potentiometer to increase or decrease the outgoing level to the caller.

Note: This is all happening outside the broadcast.

If all is OK and both parties know what to do, you can press the ON switch and fade up the caller On-Air, or, put the fader in its "0 or 10" position and activate the ON switch to put the caller on-air.

If you do not have access to the internet and want to establish a classic connection over the telephone carrier connect a telephone Hybrid between the Cleanfeed send and Cinch sockets and the stereo line cinch inputs of the VoIP channel. Both stereo line input cinch sockets need to be feeded with the same signal.

Both cleanfeed cinch sockets carry the same mono signal, which is also send to the VoIP channel 6.



WEBSTATION

Configuration Manager



User Manual

VERSION 1.0.790.0



D&R Electronica B.V., Rijnkade 15B, 1382GS Weesp, The Netherlands
Phone: +31 (0)294-418014, Fax: +31 (0)294-416987, Website: <http://www.d-r.nl>, E-Mail: mail@d-r.nl

12.1 Introduction

Webstation Configuration Manager is a software tool to configure the Webstation console. This manual describes the features Webstation Configuration Manager contains and how to setup and use the application.

12.2 Connection & Setup

Webstation Configuration Manager communicates indirectly with the Webstation console over an Ethernet connection using UDP/IP (User Datagram Protocol). Since the only available physical communication interface on the Webstation console is USB, another Webstation Control application is required to run on the PC the Webstation is connected to (main PC). The Webstation Control acts as a USB/UDP gateway and provides a communication interface for client applications anywhere on the network, like Webstation Configuration Manager.

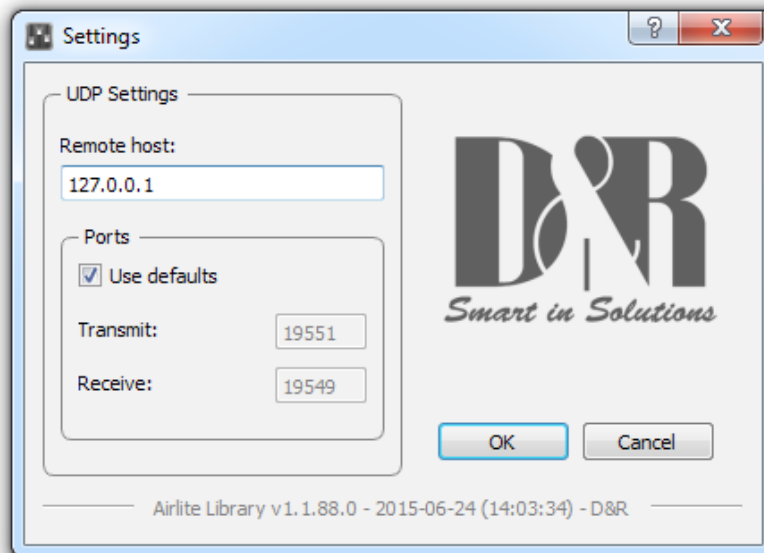
In order to use *Webstation Configuration Manager* follow the steps below:

1. Connect the USB-main port of the Webstation to your PC with the supplied USB cable
2. Install, configure and run the *Webstation Control* application on this 'main' PC
3. Run *Webstation Configuration Manager* on any PC in the network, or from your home!

12.3 Communication

Pressing Options->Communication from the menu bar will open the communication settings window.

12.3.1 Remote Host



In the Remote Host field the IP address of the main PC needs to be specified. For running the Webstation Configuration Manager on the main PC one can use the 127.0.0.1 (localhost) IP address.

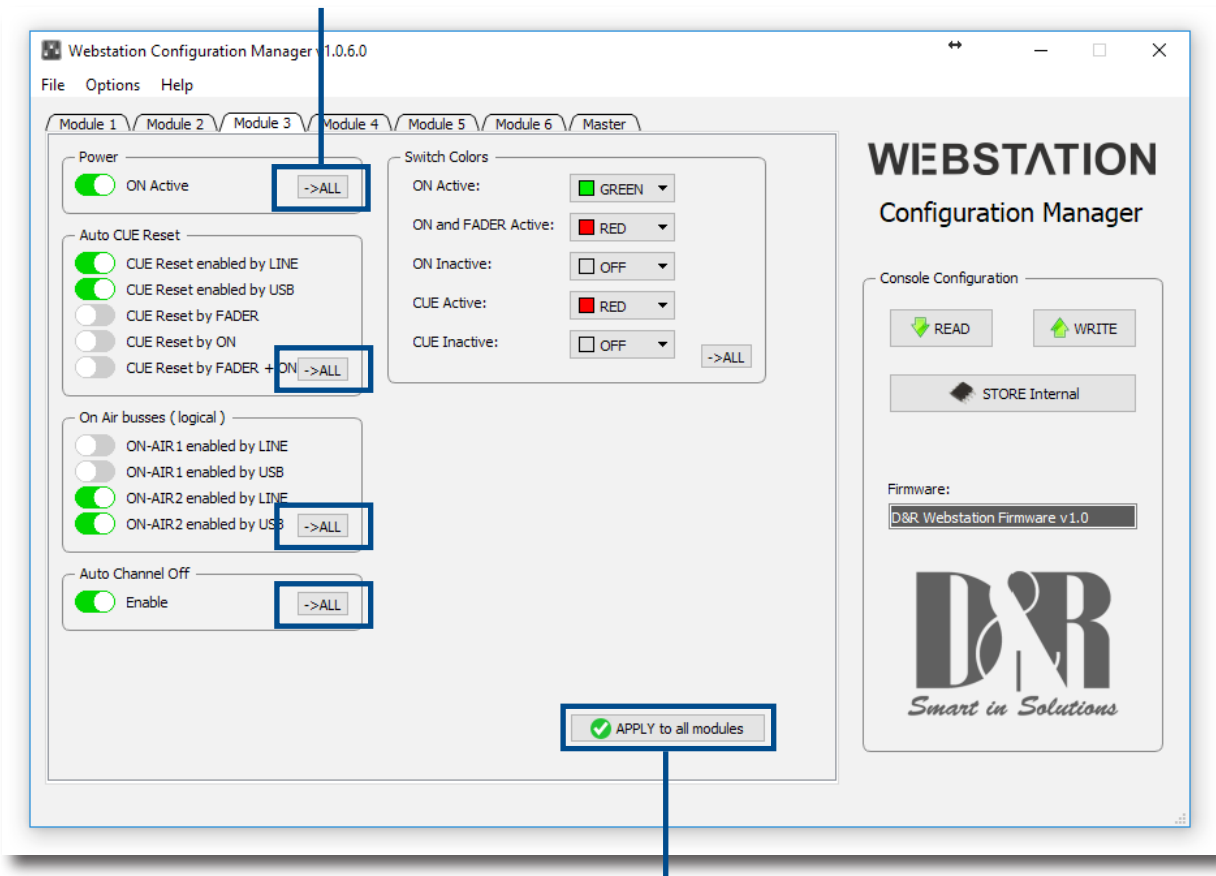
12.3.2 Ports

Webstation Configuration Manager uses a transmit and receive port for the communication to/from the Webstation console. By default these ports are pre-configured and do not need to be changed unless specific port configuration is required.

12.4 Module Settings

In this chapter the module settings for the six modules within the console are discussed. Each module has its own settings tab.

Apply a configuration section of the selected module to all other modules.

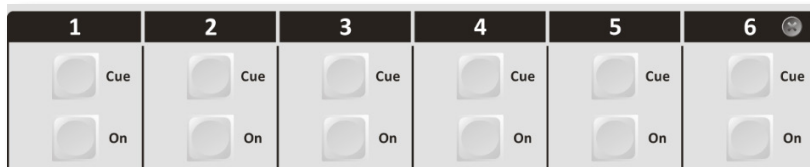


Apply entire configuration of the selected module to all other modules.

12.4.1 Power ON Active

The Webstation console contains ON-switches to activate a specific module.

If *ON Active* in the *Power* section is enabled the module will be active when powering the console. Using this function while a power outage occurs prevents silence on air if no person is in the studio to (re-)activate the module.



12.4.2 Auto CUE Reset

When the CUE-switch of a module in the console is activated (also called PFL) the selected source (LINE or MIC/USB/VoIP) will be routed to the CUE buss. To deactivate a module from the CUE buss you can press again the CUE-switch.

The *Auto CUE Reset* feature can reset the CUE buss (deactivate all modules from the CUE buss) automatically by Fader, ON and/or Fader+ON. The function can be enabled for LINE and MIC/USB/VoIP separately.

12.4.3 On Air Busses

Two logical on-air busses are available which can be enabled for LINE and/or MIC/USB/VoIP for each module.

12.4.4 Switch Colors

In the *Switch Colors* section the colors of the ON and CUE switches can be configured to be OFF, RED, or GREEN depending on the state of the switch-function. It is up to the user to define a suitable color for a corresponding state.

ON states:

- ON Active
- ON and Fader Active
- ON Inactive

CUE states:

- CUE Active
- CUE Inactive

12.4.5 CRM Feedback Prevention

**** These settings are only available for modules 1 and 2 (MIC modules) ****

In order to prevent feedback from a microphone in the Control Room the functions *CRM Mute* and *CRM Auto Cue – (AutoDeactivate)* can be enabled.

CRM Mute:

- Mute CRM buss when the module is active (MIC selected).

CRM Auto Cue – (AutoDeactivate)

- Deactivate the Auto Cue CRM function when cue'ing module (MIC selected).

12.4.6 Microphone

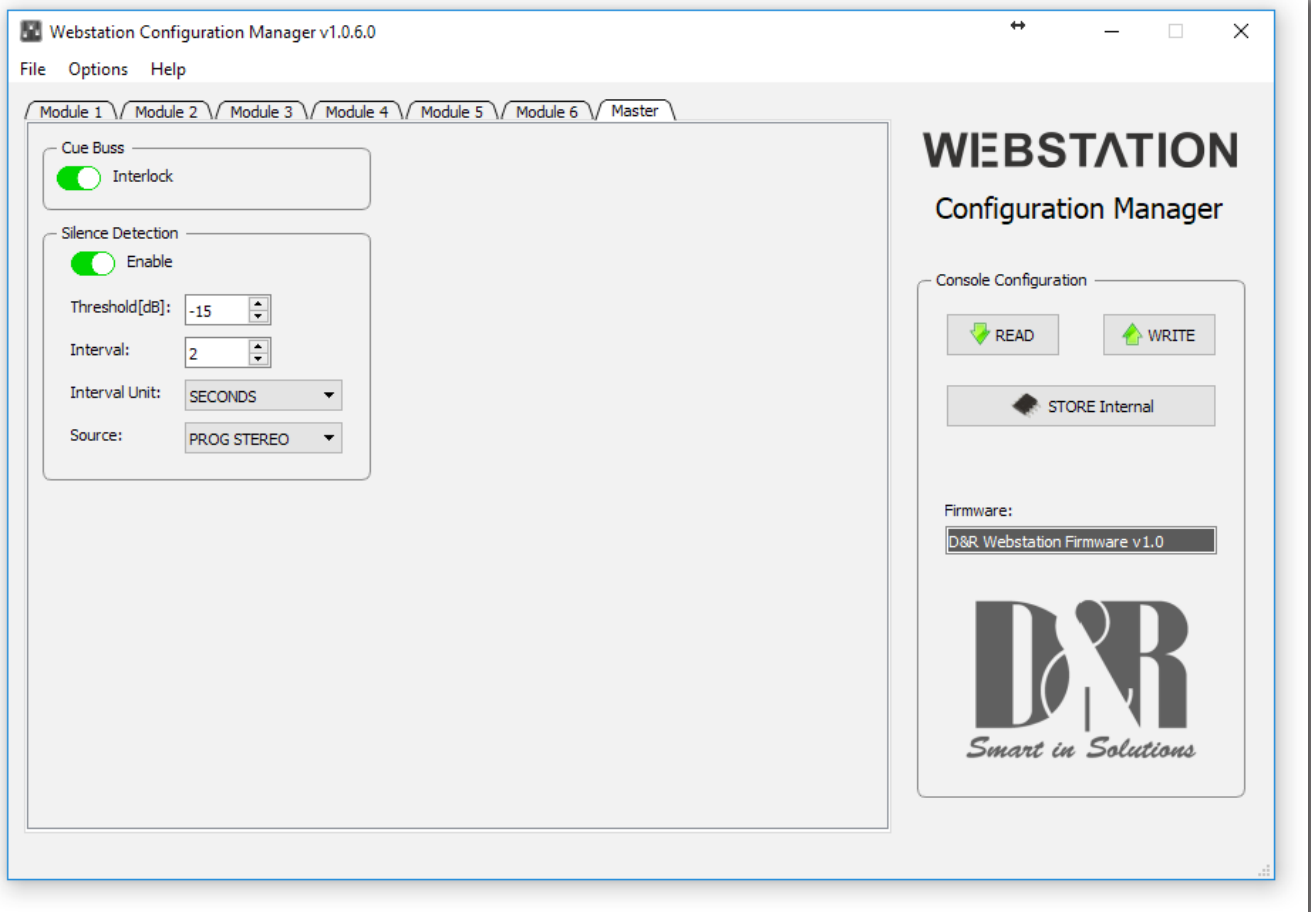
**** These settings are only available for modules 1 and 2 (MIC modules) ****

Phantom enables +48V power on the MIC XLR-connector required for condenser microphones.

MIC at Line – set this option if a microphone is connected at the line input (using external preamp).

12.5 MASTER SETTINGS

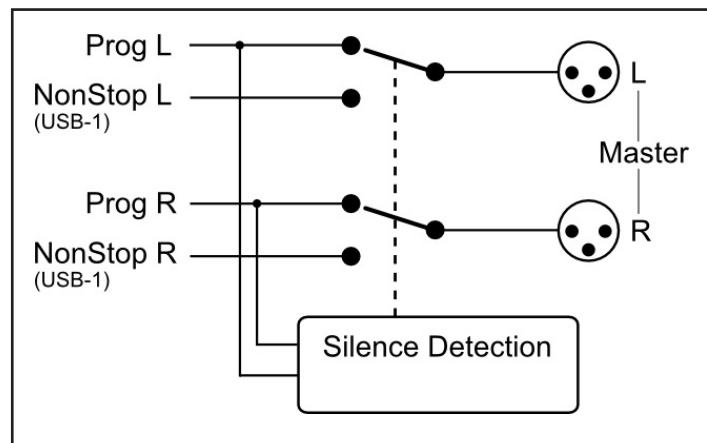
In this chapter the master settings of the console will be discussed.



12.5.1 Silence Detection

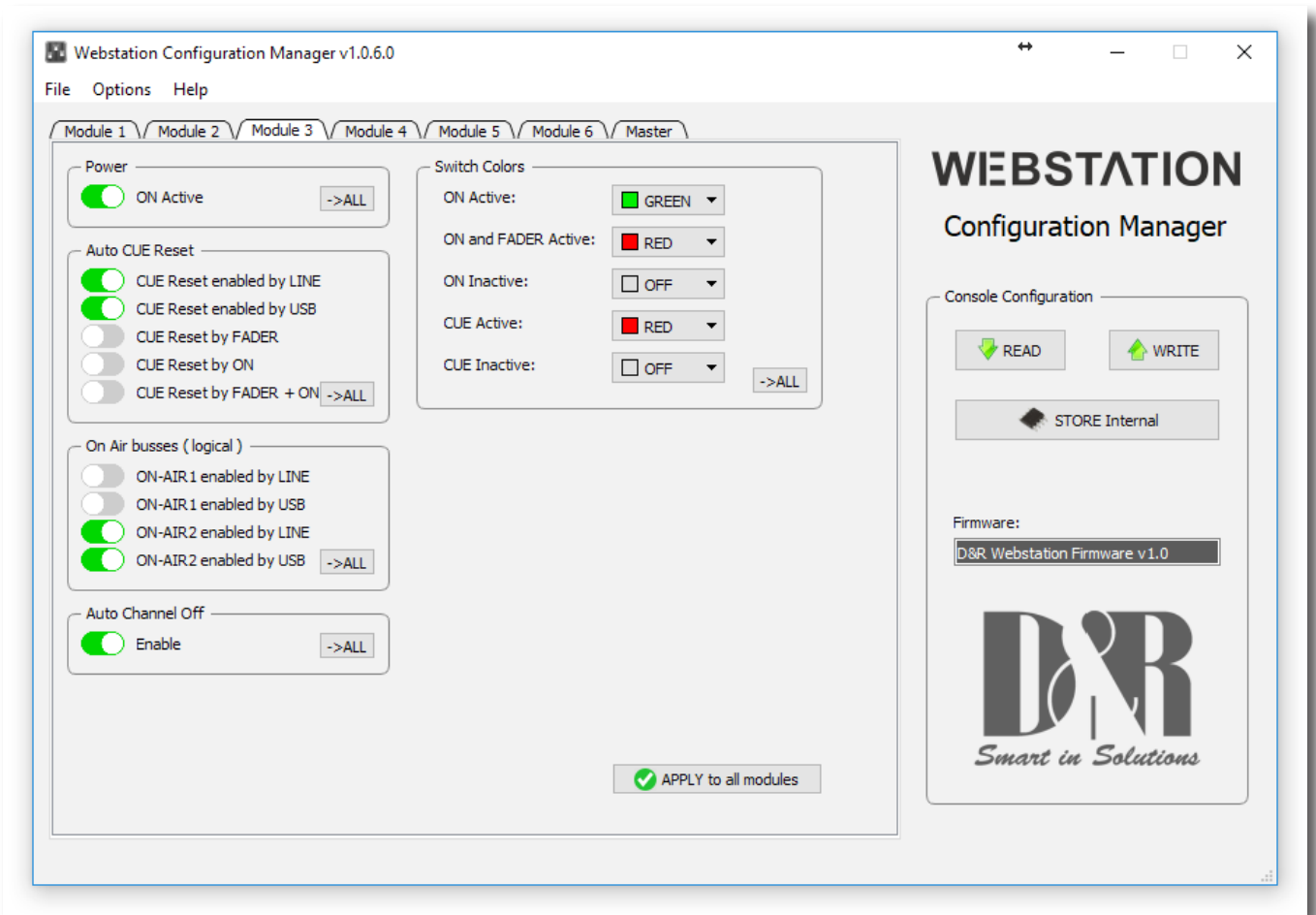
The Webstation console is equipped with a software silence detection unit which is used to monitor the program buss (left, right, stereo) in the event of the signal going below the *threshold* (-40...0dB) after a given *interval*. In this situation the unit will go into ALARM state and switches the nonstop source to the master output. The *Interval Unit* can be set to seconds or minutes.

The red flashing nonstop switch on the console indicates the alarm state. The silence alarm can be reset by pressing the nonstop switch (which will become green). The Program buss is routed to the master output after the reset.



12.6 Read/Write Configuration from/to console

To read the configuration from the console into the *Webstation Configuration Manager* you need to press the 'READ' button. After the configuration has been read the firmware field shows the current firmware in the console after the read command. Once the configuration is read successfully, adjustments can be made and written back to the console or saved as a preset.



Pressing the 'WRITE' button uploads the current configuration in *Webstation Configuration Manager* to the console. The configuration is directly active but not saved internally. The configuration is lost after a power off.

12.6.1 Store Internal

The *Store Internal* button stores the current configuration in the console to persistent memory (EEPROM). This means the configuration is still active after a power off. A warning will be prompted to make sure you want to overwrite the internal saved configuration.

12.7 Configuration Presets

Webstation Configuration Manager is able to import/export the configuration from/to a preset file. These preset files have the .xml file extension. A preset file includes the module and master settings.

12.7.1 Create Preset

Saving a preset can be done by pressing File->Save(as) from the menu bar.

12.7.2 Load Preset

Loading a preset can be done by pressing File->Open from the menu bar and selecting the preset file.

WEBSTATION

Meters



User Manual

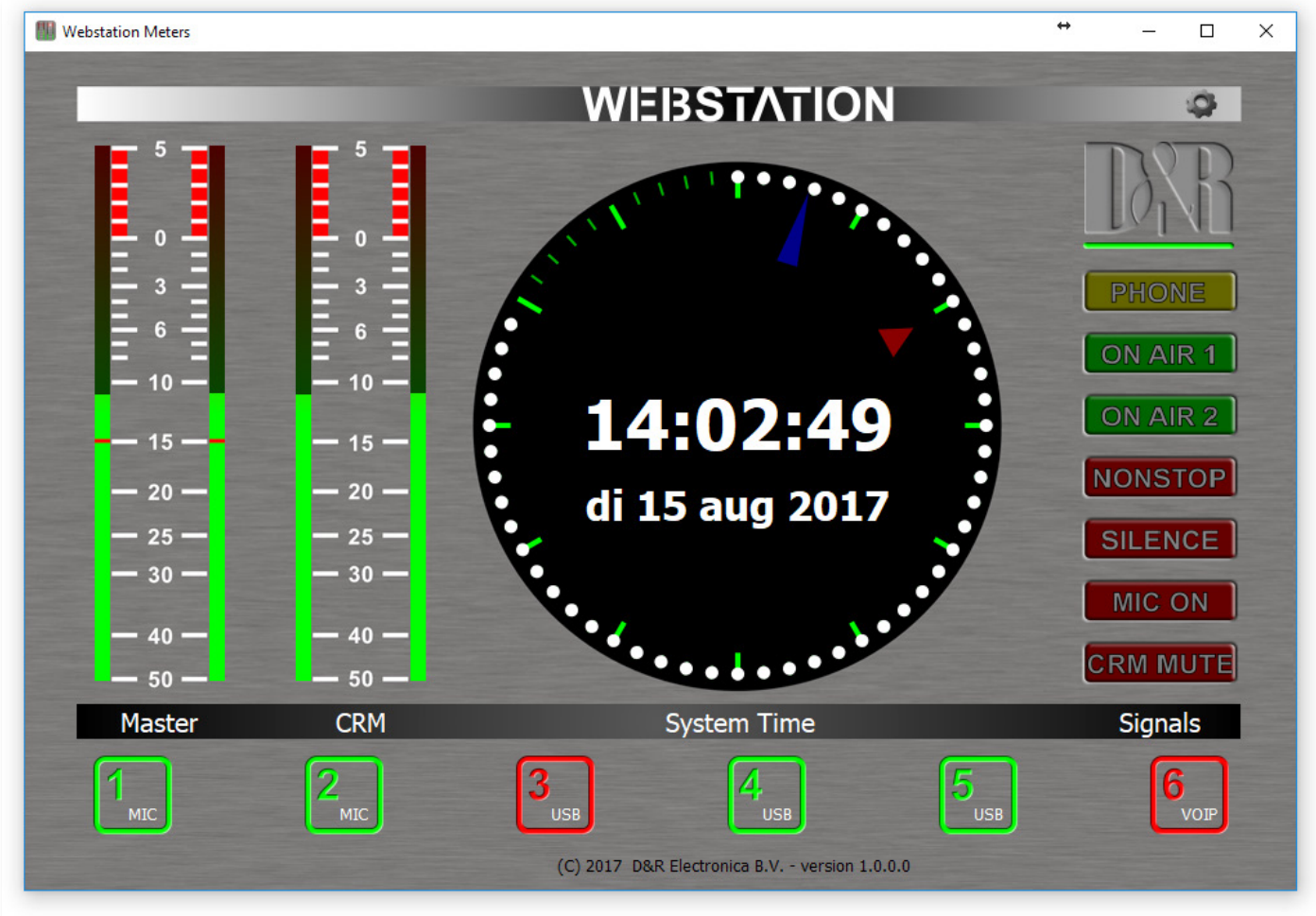
VERSION 1.1.205.0



D&R Electronica B.V., Rijnkade 15B, 1382GS Weesp, The Netherlands
Phone: +31 (0)294-418014, Fax: +31 (0)294-416987,
Website: <http://www.d-r.nl>, E-Mail: mail@d-r.nl

13.1 Introduction

Webstation Meters is a software tool that lets you as a user monitor and control the Webstation console in an intuitive and user friendly manner. This manual describes the features Webstation Meters contains and how to setup and use the application.



Software elements

13.1.1 Analog and Digital clock

Webstation meters provides an analog as well as a digital clock which display PC system time the application is running on. The analog clock contains a seconds dot counter which can be used as indicator for program end time countdown.

13.1.2 PPM meters

Two stereo PPM (Peak-Program-Meters) meters provide real-time and accurate readings of the Master- and CRM(Control Room Monitor) buss audio levels. A variety of PPM meter scales exist these days with all different ranges and read outs. Based on the most used scale the following type is used: IEC 60268-10 Type I, DIN scale. This scale ranges from -50 to +5dB.

13.1.3 Silence detection

Since continuous radio is important for a radio station, the Webstation is equipped with a built-in software silence detector which guards presence of audio signal on the master output. If no sound is present for a specified time, the console generates an alarm and switches automatically to non-stop mode. When the silence detector is active red line marks in the master PPM bars indicate the threshold as well as the operating mode which can be left, right or stereo.

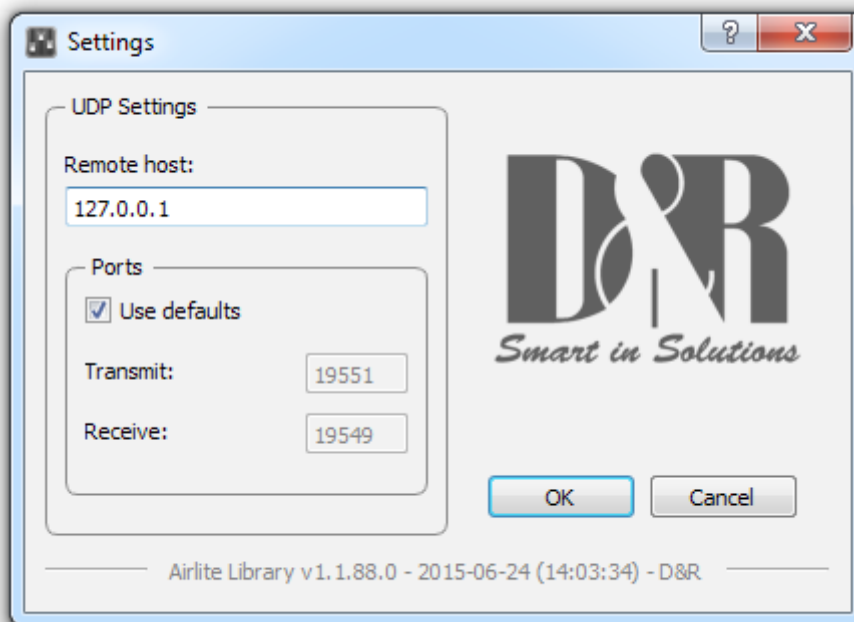
13.1.4 MIC ON Timer

The first two modules of the Webstation can be used for connecting microphones. If one of these mic modules is active (source selector is set to mic, ON is active and fader is up) the MIC ON timer will start. Once the timer is active the elapsed time is shown in the analog clock area below the system date. The timer will reset if all the mic modules are inactive.

13.1.5 Settings

Pressing the gear wheel symbol at the right upper corner will open the (communication) settings window.

Webstation Meters communicates indirectly with the console via a UDP/IP (User Datagram Protocol) connection. Since the only available communication interface on the webstation console is USB, another Webstation Control application is required to run on the PC the Webstation is connected to. The Webstation Control acts as a USB/UDP gateway and provides a communication interface for client applications anywhere on the network, like Webstation Meters.



13.1.6 Online indicator

Below the D&R logo the online indicator is located. This indicator will become green (online) when receiving metering data. Make sure the Webstation Control application is running on the main PC in order to provide the metering data to Webstation Meters.

When the indicator shows an offline status (grey) the Webstation Control application is not running or the Webstation console is disconnected.

13.1.7 Console signals

At the right side Webstation Meters contains a set of console signals indicating internal states of the console.

- PHONE : Informs you about an incoming call on module 6 (VoIP).
- ON AIR 1/2 : Configurable Logical busses. Can be attached to a GPO for example.
- NONSTOP : Used as indicator as well as a remote nonstop switch by clicking on the signal.
- SILENCE : Indicates the silence detector is in alarm state. In this alarm state NONSTOP is flashing to indicate the console has switched automatically to nonstop mode. The alarm can be reset by clicking on NONSTOP or by pressing the nonstop switch on the console.
- MIC ON : One of the mic modules is active. Behaves parallel to the hardware MIC ON output.
- CRM MUTE : CRM buss is muted by active mic module where crm-mute option is enabled.

13.1.8 Module states

The Webstation console contains six modules in which their current state is represented by the rectangular icons at the bottom of the application. Each icon shows the state of the ON switch and the selected source of the relevant module.

13.1.9 ON-switch

A module can be in one of the following three states:

ACTIVE : ON active, fader down

ACTIVE_AND_FADER_ON : ON active, fader up

INACTIVE : ON inactive, fader down

Since the ON switches of the Webstation console have internal LEDs, each of the above states can be configured to represent one of the following colors: NONE, RED, GREEN. It is up to the user to determine which color represents a particular state.

The icons in *Webstation Meters* can be seen as duplicates of the ON switches and can therefore behave as remote of the hardware switches. Clicking on the icons results in toggling the ON state.

*** NOTE: If the icon flashes, the module is in voicetrack-mode.

13.1.10 Source select

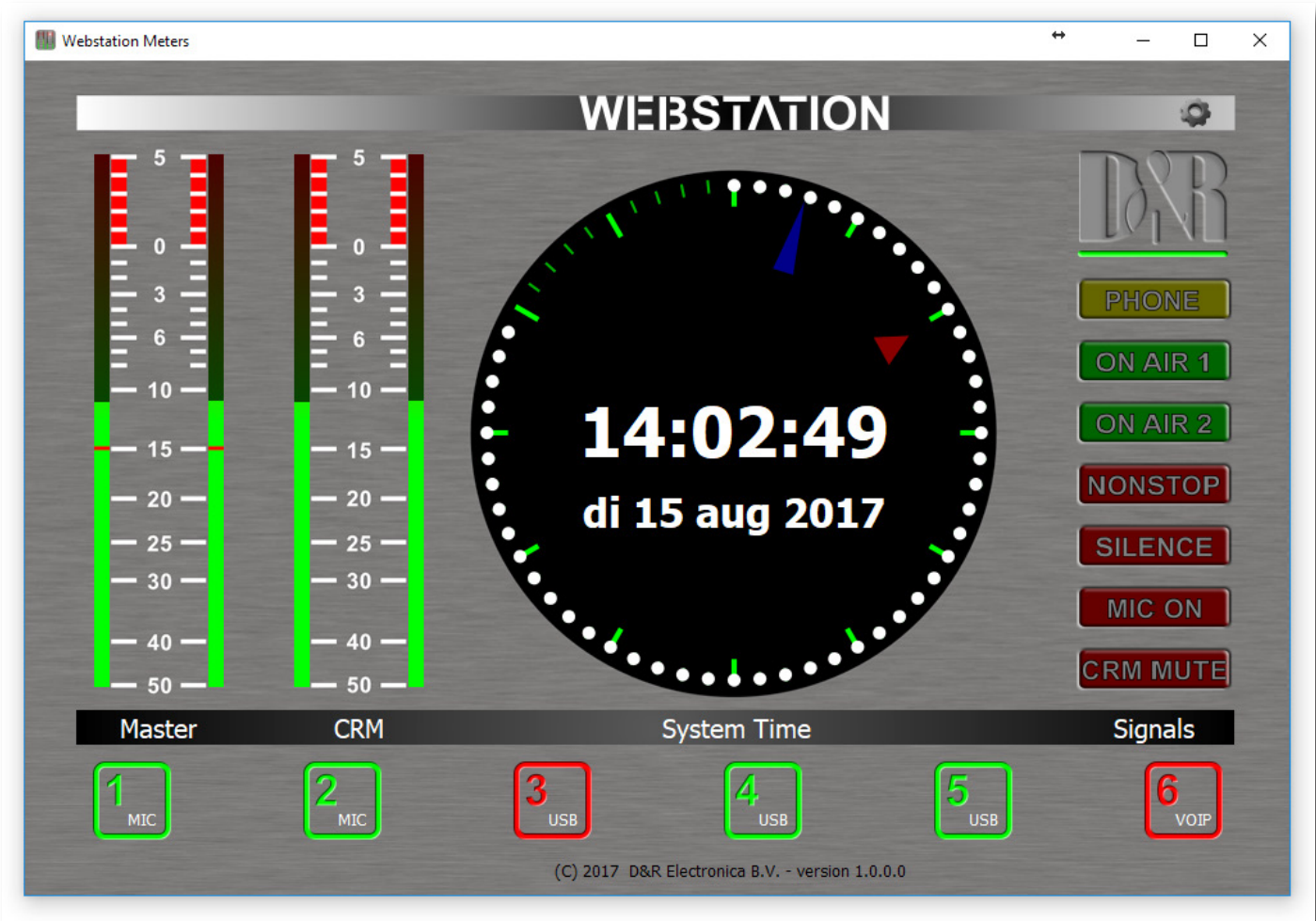
Each module can select between LINE and MIC/USB/VoIP source depending on the module.

Additional to showing the ON switch state, the currently selected source for each module will be shown in the lower right corner of the icons.

13.2 Setup

In order to use *Webstation Meters* follow the steps below:

- Connect the USB-main port of the Webstation to your PC with supplied USB cable
- Install, configure and run the *Webstation Control* application on this main PC
- Run *Webstation Meters* on any PC in the network, or from your home!



14 UNDERSTANDING INTERNET RADIO

One of the key features of the Webstation is that you can set up your own Internet radio station from your home or office and have your friends listen to your broadcasts, be it music, talkshows, political, or religious programming. For more information on the Internet, follow the web links below.

NOTE: D&R does not accept responsibility for the content of the following links or sites.

How it works : <http://www.shoutcast.com/support/docs/>
Winamp : <http://www.classic.winamp.com/>
Shoutcast server : <http://www.shoutcast.com/download/serve.phtml/>
Shoutcast dsp plugin : <http://www.shoutcast.com/download/>

The following paragraphs concerning the Internet might give you a better understanding about Internet radio.

If you wish to set up a broadcast and you are a do-it-yourself kind of person you might do well creating your own online radio station by using your own personal computer to create a dedicated server for doing the job. Some of the software options for getting this done include:

SHOUTcast:

SHOUTcast is one of the original free Internet radio software solutions for streaming audio. You can start your own station fairly easily and the software is free to download. <http://www.shoutcast.com/download>

Helix Server Basic

Free streaming media server software which can distribute live and on-demand video and other media. Realnetworks.com describes it as: "Simple 5-stream server. This free media server is a great solution if you are getting started with streaming media and want to experiment before rolling it out to a large audience." The Helix Server Basic is free to download. <http://www.realnetworks.com/products-services/free-helix-products.aspx>

Quicktime Streaming Server

Apple.com says: "Whether you are looking to add streaming media to your web site, deliver distance learning or provide rich content for your mobile subscribers, Mac OS X Server has all of the tools you need. QuickTime Streaming Server lets you deliver live or prerecorded content in real time over the Internet." You can find out more at apple.com. <http://www.apple.com/quicktime/streamingserver/>

Quicktime Broadcaster

Apple.com writes: "Combining the power of QuickTime with Apple's ease of use, QuickTime Broadcaster allows just about anyone to produce a live broadcast event." Download this software from apple.com <http://www.apple.com/quicktime/broadcaster/>

Peercast

Peercast.org is a non-profit website that provides free peer-to-peer broadcasting software. "PeerCast is a simple, free way to listen to radio and watch video on the Internet. It uses P2P technology to let anyone become a broadcaster without the costs of traditional streaming," according to the peercast.org website. <http://www.peercast.org/>

Icecast

Icecast is "free server software for streaming multimedia." Download a copy from icecast.org. <http://www.icecast.org/>

Andromeda

Andromeda is delivery-on-demand software. "Andromeda scans your MP3s and presents them as a fully-featured streaming Web site. That means you simply add, move, rename, and delete files and folders to update the contents of your Andromeda-powered site. It's as easy as drag, drop, stream," according to turnstyle.com where you can download an evaluation copy. <http://www.turnstyle.com/andromeda/>

15 TECHNICAL SPECIFICATIONS

15.1 SPECIFICATIONS

INPUTS.	: Mic inputs : XLR connector balanced impedance 2 kOhm. : Pin 1 = ground. : Pin 2 = hot (in phase). : Pin 3 = cold (out of phase). : +48 volt Phantom power : bal, 2 kOhm, XLR. ,48 volt Phantom. : Noise 128 dBr (A-weighted). : Sensitivity- 70dB min, OdB Max.
LINE	: unbal, 10kOhm, Cinch. : Gain range of 40dB.
INSERTS.	: Stereo jack, -10dBv : Tip =Input (connect to output of signal processor) : Ring =Output (connect to input of signal processor) : Ground=shield
EQUALIZER	: High: + / -12 dB at 12kHz shelving. : Low: + / -12dB at 60 Hz shelving.
USB	: 3x Stereo in and 3x stereo out (+ and incl VoIP) : Fully compliant with USB 2.0 playback and record mode. 3x Stereo in and Main stereo, Voice Track or VoIP signal out. HID Functions: Volume Mute Control
USB CONTROL SECTION.	: 12 free assignable illuminated switches plus encoder, based on the HID protocol.
MIC ON	: Stereo jack, Tip is a change over contact between sleeve and ring. NOT FOR 110/220 VOLT SWITCHING!!!!!!! It can only switch 24V/50mA max!
OUTPUTS	: Left/Right + 0 dBu unbalanced on Cinch : Headphone 32-600 Ohm, Jack. : USB out can be Main program stereo signal/VoiceTrack/VoIP
OVERALL	: Frequency response: 10 - 60.000Hz. : Distortion: < 0.01% max at 1 kHz. : Start switch: isolated reed relay. (24volt/50mA) : Metering On Screen
SOFTWARE	: A software protocol is available for programming of the USB HID protocol to match your software.

"We reserve the right to change or improve specifications when necessary"

15.2 DIMENSIONS

Left-Right	: 350 mm
Front-Back	: 315 mm
Height	: 30 mm to 90 mm.
Front panel thickness	: 2 mm
Radius Corners	: 20 mm
Weight	: 8 kg.
Drop through hole	: 320mm x 295mm

We wish you many creative years of productivity using this quality product from:

Company	: D&R Electronica b.v.
Address	: Rijnkade 15B
Zip Code	: 1382 GS
City	: WEESP
Country	: The Netherlands
Phone	: 0031 (0)294-418 014
Fax	: 0031 (0)294-416 987
Website	: http://www.d-r.nl
E-mail	: mail@d-r.nl

15.3 SUMMARY

We hope this manual has given you sufficient information to use this new Webstation mixer in your studio.

If you require more info please contact your local dealer or send us an email at mail@d-r.nl and we will answer your email within 24 hours during weekdays.

In case you have bought this mixer from a previous owner, check out the dealer in your area on our website www.d-r.nl in case you need assistance.



15.4 ELECTROMAGNETIC COMPATIBILITY

This unit conforms to the Product Specifications noted on the Declaration of Conformity.

Operation is subject to the following two conditions:

This device may not cause harmful interference

This device must accept any interference received, including interference that may cause undesired operation Operation of this unit within significant electromagnetic fields should be avoided. Use only shielded interconnecting cables.

15.5 DECLARATION OF CONFORMITY

Name Manufacturer : D&R Electronica b.v.
Address manufacturer : Rijnkade 15B,
: 1382 GS Weesp
: The Netherlands

declares that this product

Name product : webstation
Model number : n.a.
Product options installed : none
passed the following product specifications
Safety : IEC 60065 (7th ed. 2001)
EMC : EN 55013 (2001+A1)
: EN 55020 (1998)

Supplementary Information:

The product passed the specifications of the following regulations;
: Low voltage 72 / 23 / EEC
: EMC-Directive 89 / 336 / EEC. as amended by Directive 93/68/EEC

(*) The product is tested in a normal user environment.

15.6 PRODUCT SAFETY

This product is manufactured with the highest standards and is double checked in our quality control department for reliability in the "HIGH VOLTAGE" section.

15.7 CAUTION

Never remove any panels, or open this equipment. No user serviceable parts inside.

Equipment power supply must be grounded at all times. Only use this product as described in the user manual or brochure. Do not operate this equipment in high humidity or expose it to water or other liquids. Check the AC power supply cable to assure secure contact. Have your equipment checked yearly by a qualified dealer service center. Hazardous electrical shock can be avoided by carefully following the above rules.

Ground all equipment using the ground pin in the AC power supply cable. Never remove this pin.
Ground loops should be eliminated only by use of isolation transformers for all inputs and outputs.

Replace any blown fuse with the same type and rating only after equipment has been disconnected from AC power. If problem persists, return equipment to qualified service technician

Always earth all your equipment by the grounding pin in your mains plug.

Hum loops should be only cured by proper wiring and isolation input/output transformers.

Replace fuses always with the same type and rating after the equipment has been turned off and unplugged.

If the fuse blows again you have an equipment failure, do not use it again and return it to your dealer for repair.

Always keep the above information in mind when using electrically powered equipment.



The place where all mixers are designed and build

NEW PRODUCT

Six dual inputs
Built in auto Silence detector
3 USB in/out stereo channels
Play out USB control section included
2 band EQ

Available end of October 2017

The Online World of Radio In Your Hands with
WEBSTATION

AIRCAST
radio automation software

feels good **does more**

D&R Electronica B.V., Rijnkade 15B, 1382GS Weesp, The Netherlands

Phone: +31 (0)294-418014, Fax: +31 (0)294-416987, Website: <http://www.d-r.nl>,

E-Mail: mail@d-r.nl

