

WM TOUCH APPLICATIONS



ARMONIA PLUS PROJECTS DOWNLOAD

Click on the link below to download the ArmoniaPlus projects with the applications seen in the Webinar

http://bit.ly/WM_Touch_Applications



BOUTIQUE CLOTHING STORE

WM TOUCH SOLUTION

System Overview

In this boutique clothing store dedicated BGM audio systems are in place for the store area and changing area. Dynamic Music Distribution allows to play any of the selected background music sources by using the source selection offered in MEZZO. This system allows for flexible power sharing to FR loudspeakers in combination with subwoofer and Hi-Z ceiling mount loudspeakers.

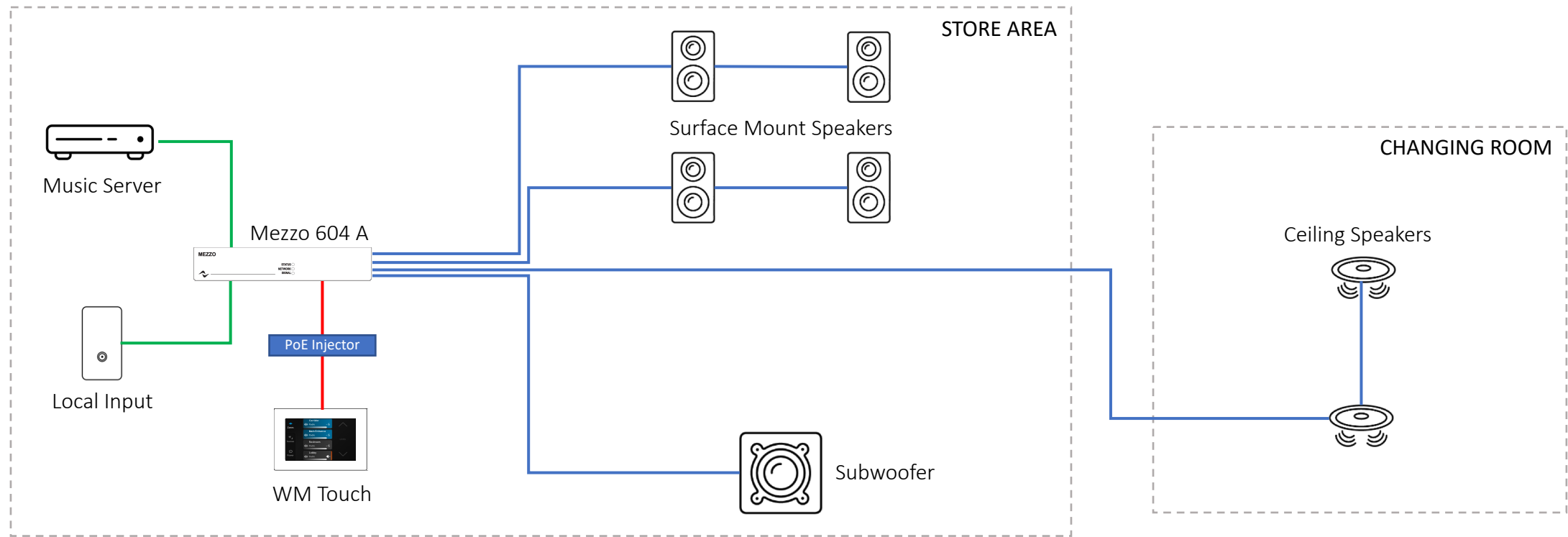
Key Features

- Full power sharing allow for flexible use of sub-woofer, full range and high impedance loudspeakers
- Dynamic routing capability embedded on amplifiers
- Dynamic music distribution for easy and flexible deployment
- Equipment can easily be placed in the store elements without the need for a dedicated rack.



BOUTIQUE CLOTHING STORE

WM TOUCH SOLUTION



- LINE LEVEL SIGNAL
- NETWORK
- SPEAKER



BOUTIQUE CLOTHING STORE

WM TOUCH SOLUTION

Mezzo 604A



Output Stage	604 A/AD		
Max. output power		symmetric	a-sym.
	per channel @ 100 V	125 W	500 W
	per channel @ 70 V	150 W	600 W
	per channel @ 16 Ω	150 W	600 W
	per channel @ 8 Ω	150 W	600 W
	per channel @ 4 Ω	150 W	400 W

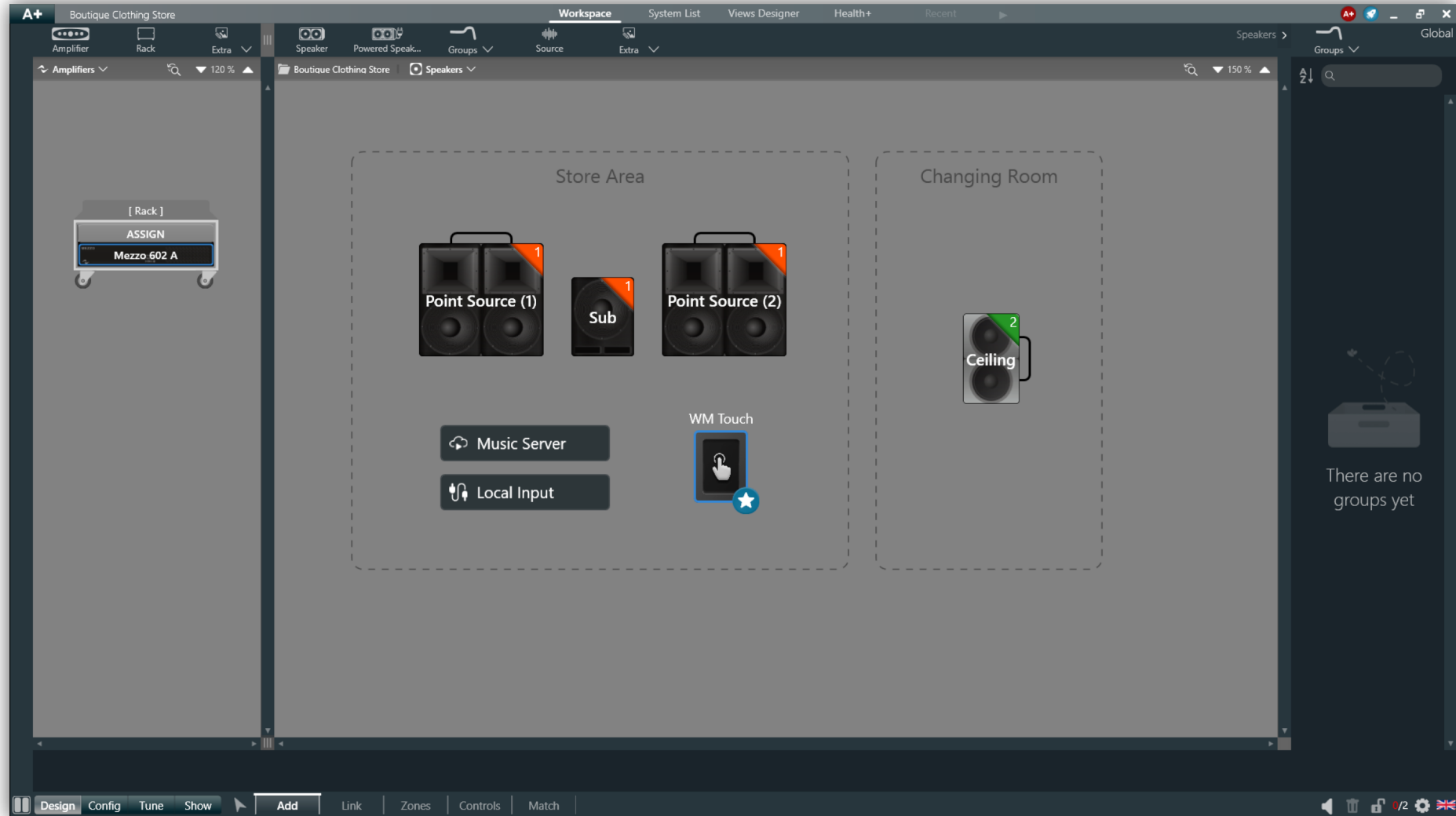
WM Touch



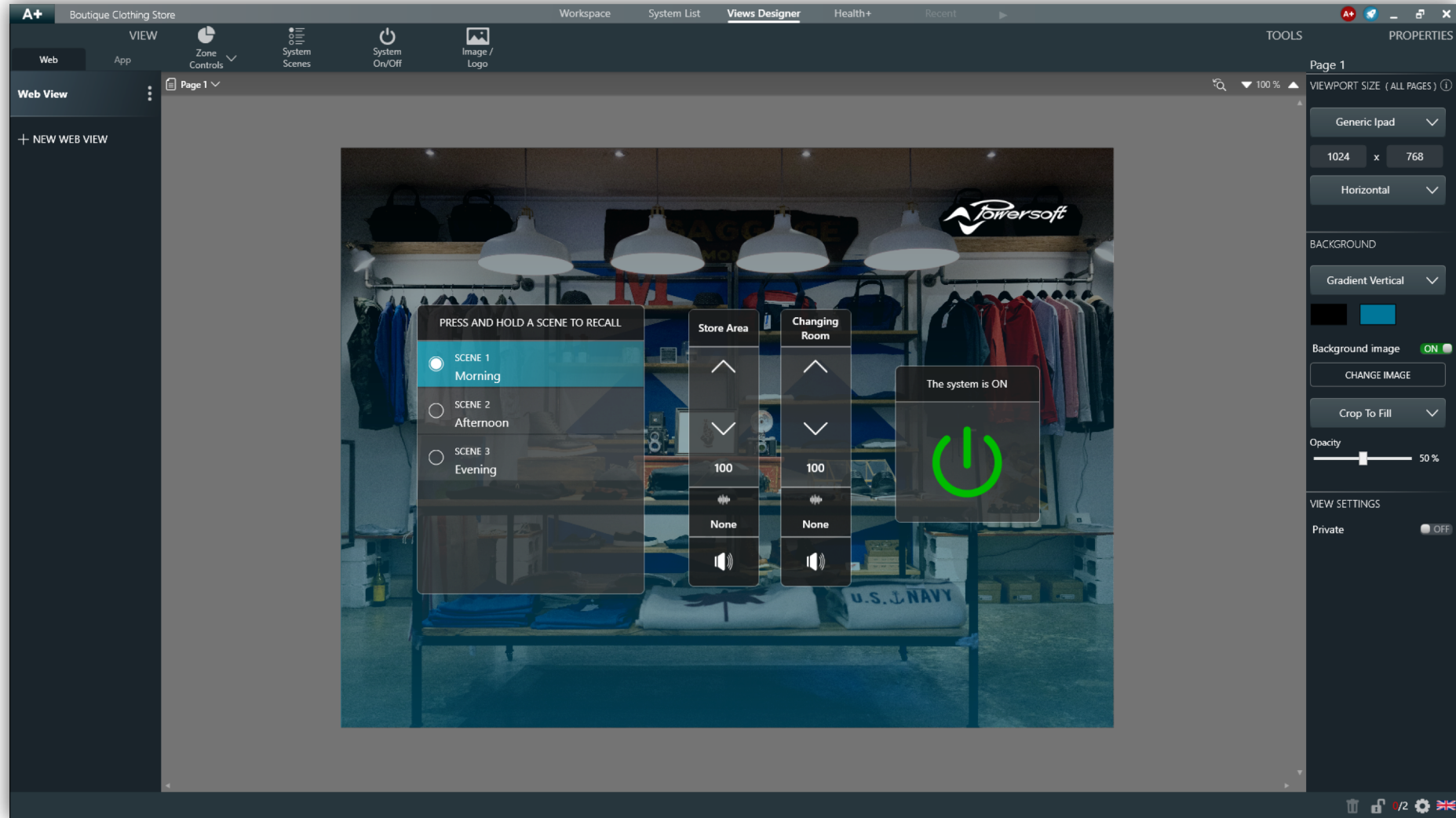
Technical Specifications	
Dimensions	L: 127.4 mm x H: 86.4mm x D:14.4 mm
LCD Screen	4.3 Inch
Aspect Ratio	16:9 (W:H)
Mounting Option	Wall Mount
Orientation	Landscape or portrait
Power Supply (not included)	PoE Injector or PoE Switch



BOUTIQUE CLOTHING STORE WM TOUCH SOLUTION



BOUTIQUE CLOTHING STORE WM TOUCH SOLUTION



BOUTIQUE CLOTHING STORE WM TOUCH SOLUTION



COFFEE HOUSE

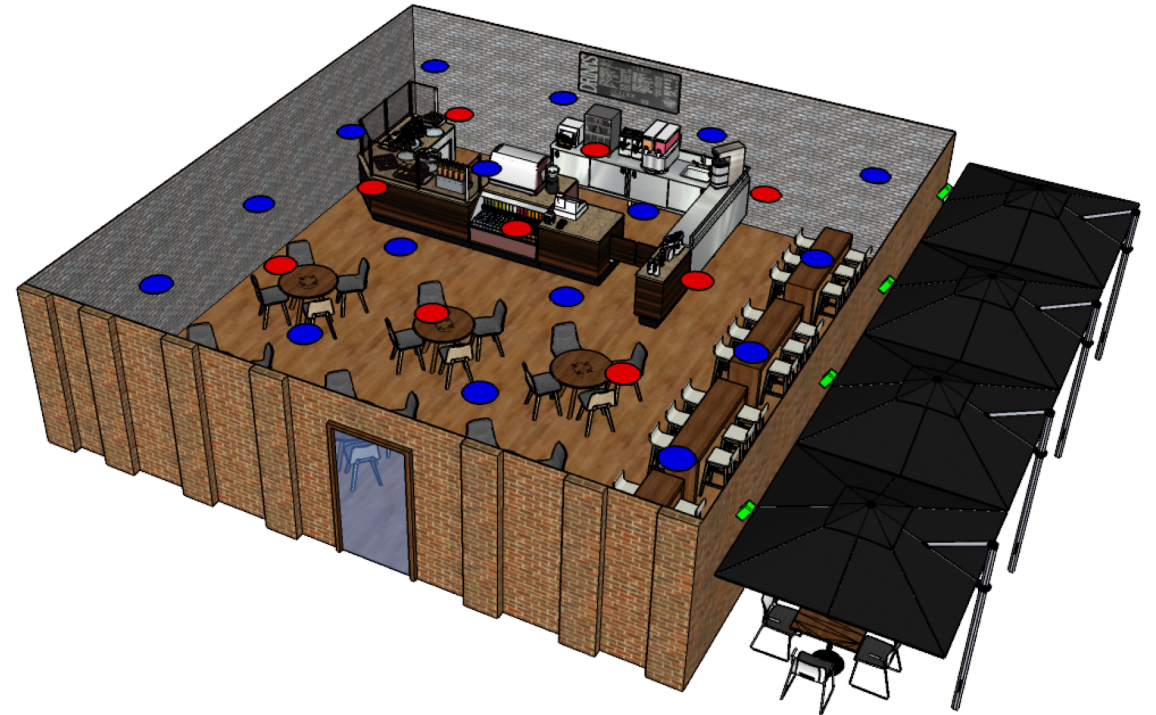
WM TOUCH SOLUTION

System Overview

In this coffee house dedicated BGM audio systems are in place for the indoor area and outdoor area. Dynamic Music Distribution allows to play any of the selected background music sources by using the source selection offered in MEZZO. This system allows for flexible power sharing to FR loudspeakers in combination with subwoofer and Hi-Z ceiling mount loudspeakers. With dynamic routing, an analog signal can be easily share via Dante to other amplifiers.

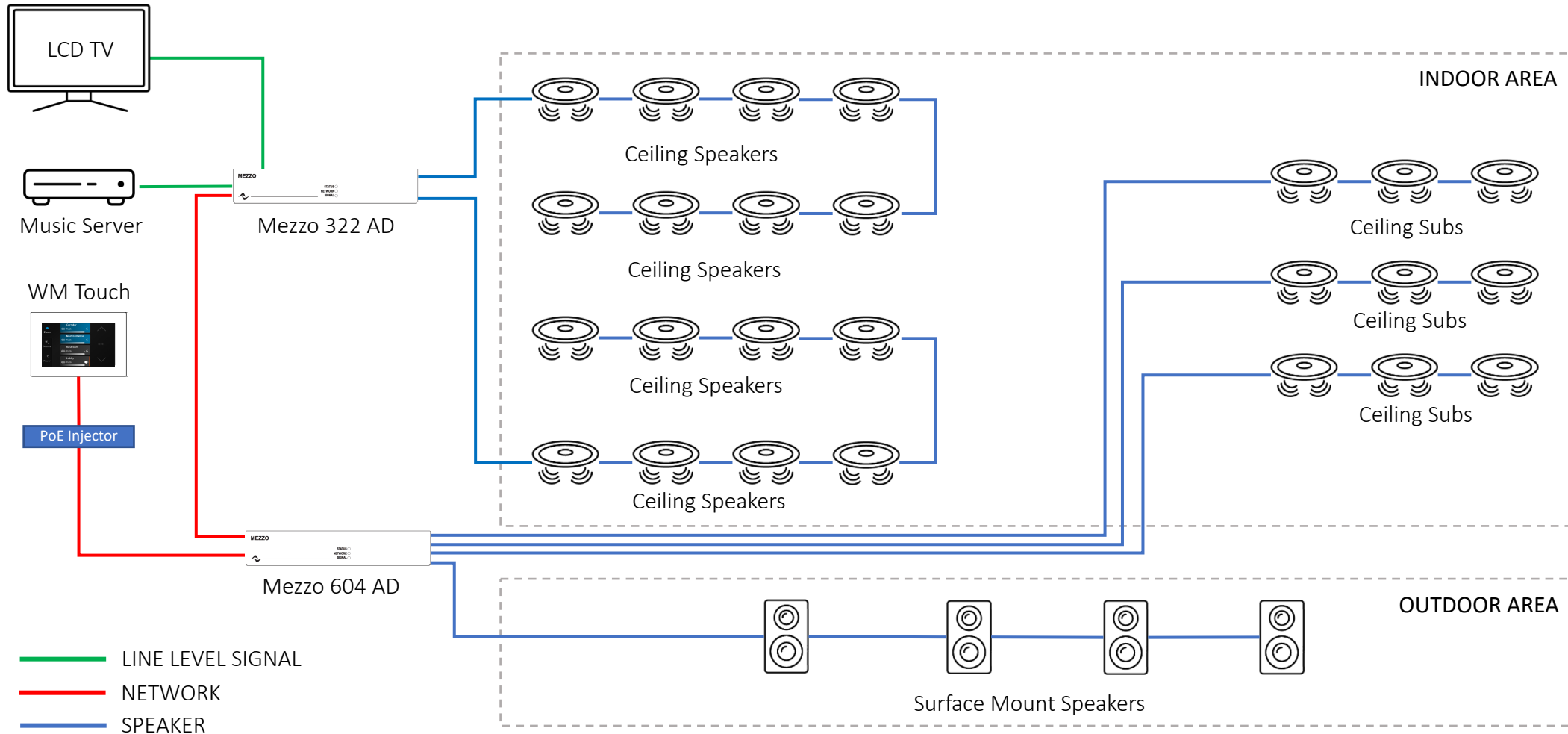
Key Features

- Full power sharing allow for flexible use of sub-woofer, full range and high impedance loudspeakers
- Dynamic routing capability embedded on amplifiers
- Dynamic music distribution for easy and flexible deployment
- Equipment can easily be placed in the store elements without the need for a dedicated rack.
- Dynamic routing enable an analog input on one amplifier to be routed to a second amplifier.



COFFEE HOUSE

WM TOUCH SOLUTION



COFFEE HOUSE

WM TOUCH SOLUTION

Mezzo 604A



Mezzo 322AD



WM Touch



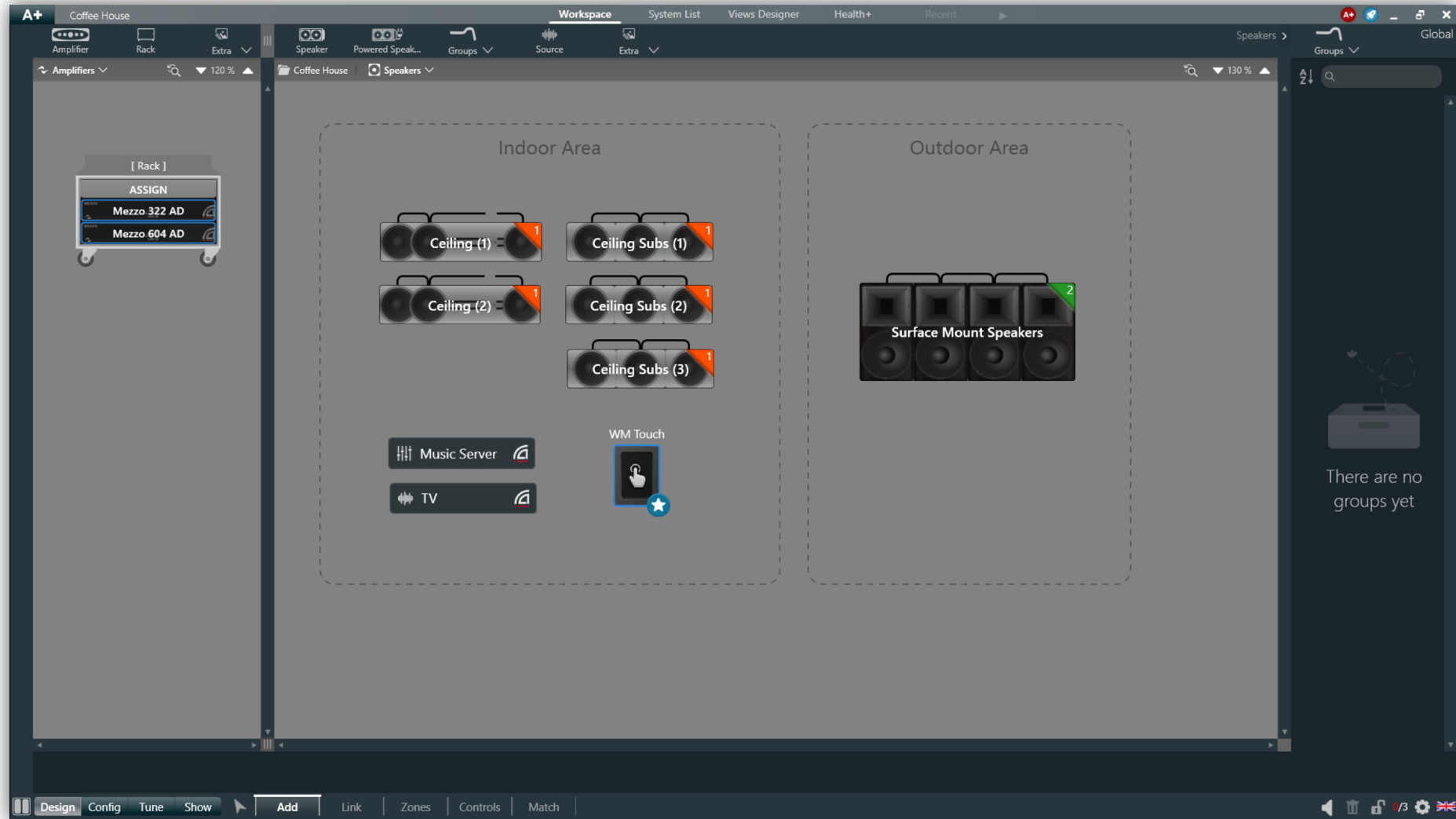
Output Stage	604 A/AD	
Max. output power		symmetric a-sym.
	per channel @ 100 V	125 W 500 W
	per channel @ 70 V	150 W 600 W
	per channel @ 16 Ω	150 W 600 W
	per channel @ 8 Ω	150 W 600 W
	per channel @ 4 Ω	150 W 400 W

Output Stage	322 A/AD	
Max. output power		symmetric a-sym.
	per channel @ 100 V	160 W 320 W
	per channel @ 70 V	160 W 320 W
	per channel @ 16 Ω	160 W 320 W
	per channel @ 8 Ω	160 W 320 W
	per channel @ 4 Ω	160 W 320 W

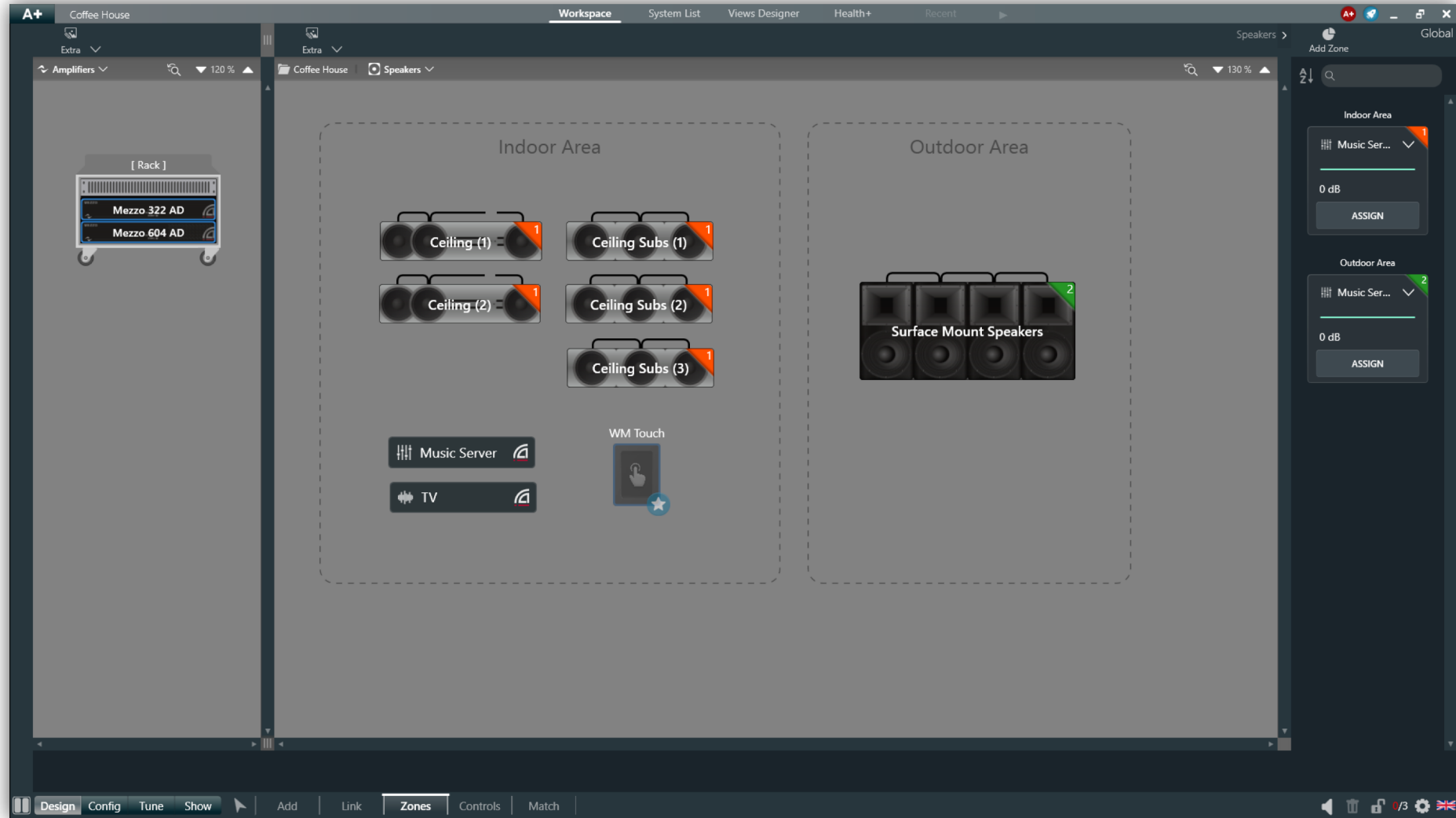
Technical Specifications	
Dimensions	L: 127.4 mm x H: 86.4mm x D:14.4 mm
LCD Screen	4.3 Inch
Aspect Ratio	16:9 (W:H)
Mounting Option	Wall Mount
Orientation	Landscape or portrait
Power Supply (not included)	PoE Injector or PoE Switch



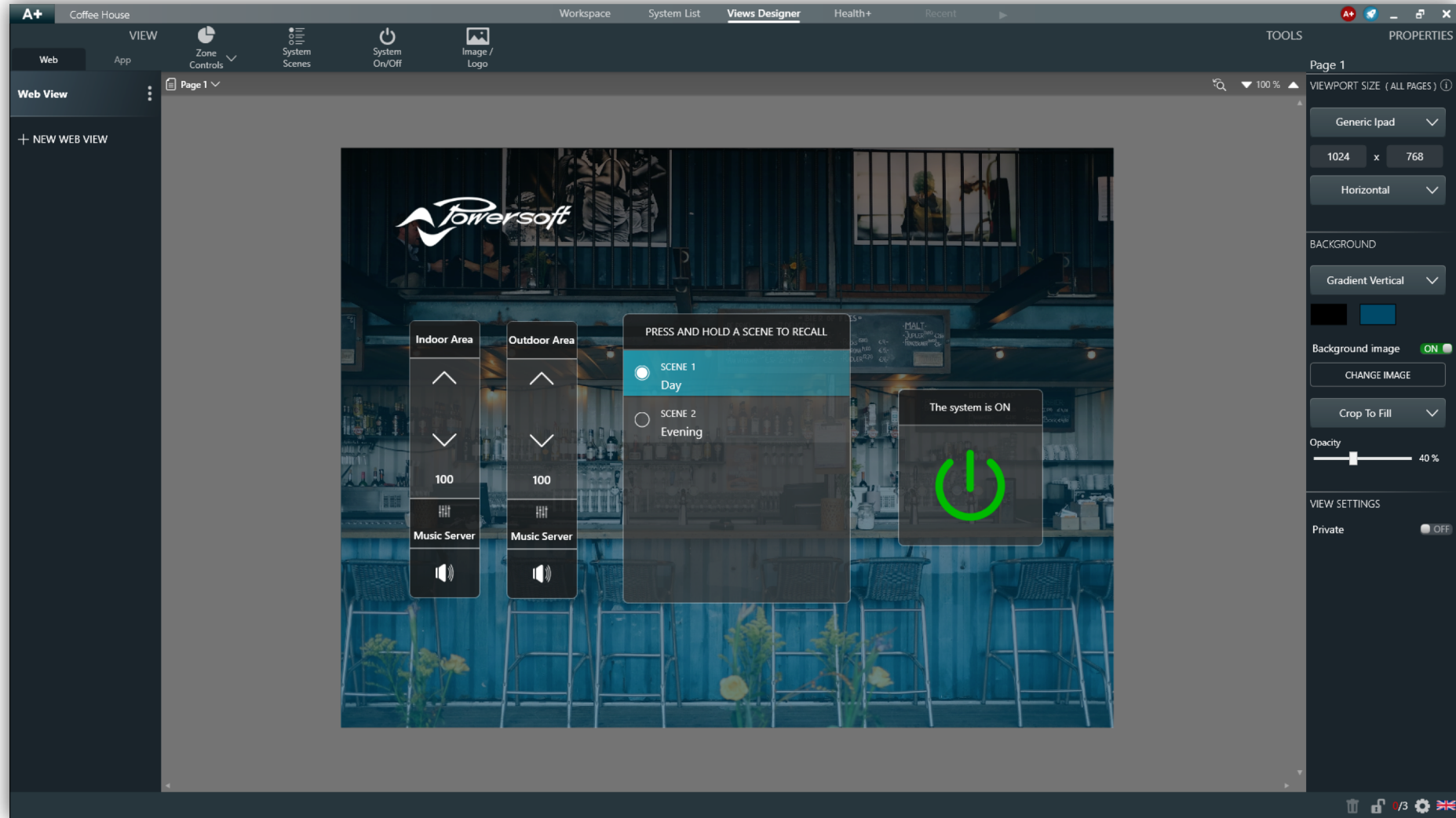
COFFEE HOUSE WM TOUCH SOLUTION



COFFEE HOUSE WM TOUCH SOLUTION



COFFEE HOUSE WM TOUCH SOLUTION



YOGA STUDIO

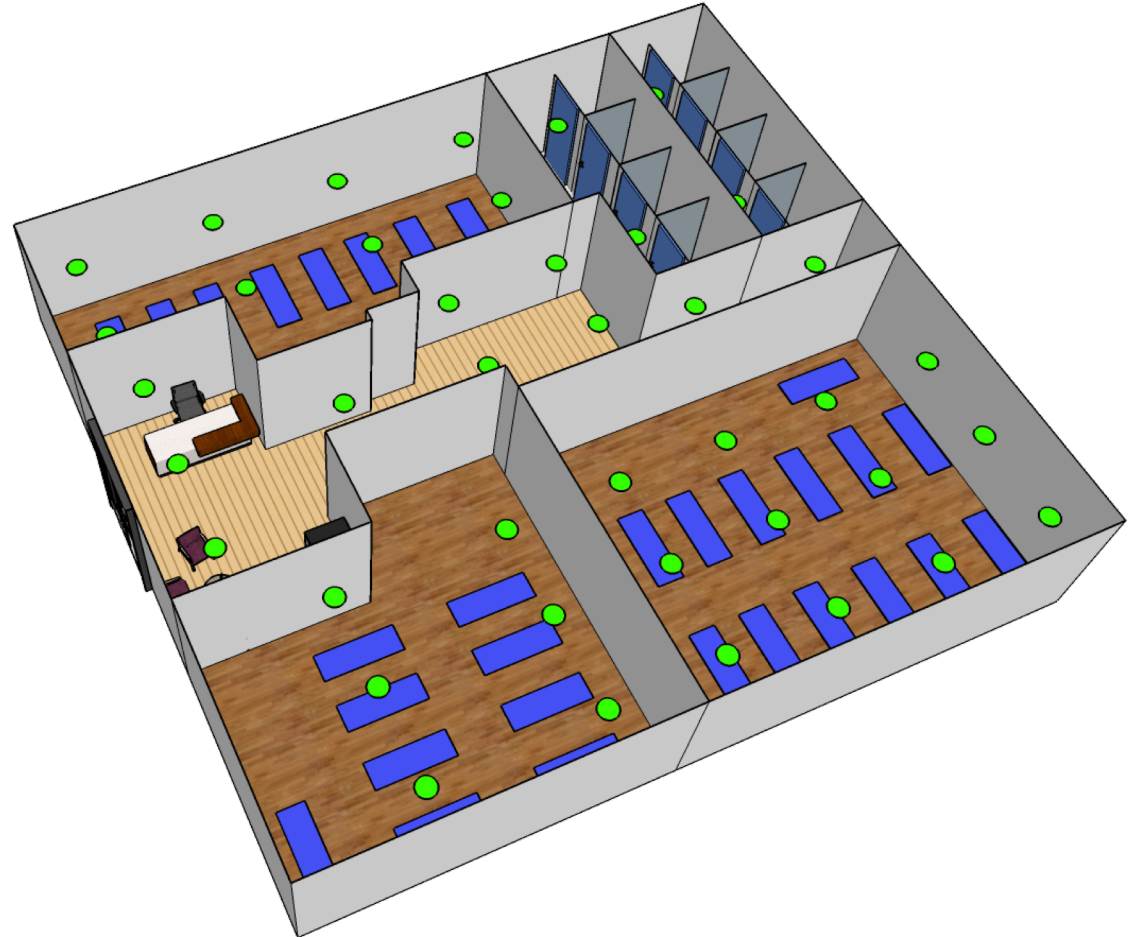
WM TOUCH SOLUTION

System Overview

In this yoga studio dedicated BGM/FGM audio systems are in place for the 3 yoga studios, male and female locker and the reception and common area. Dynamic Music Distribution allows to play any of the selected background/foreground music sources by using the source selection offered in MEZZO. This system allows for flexible power sharing to FR loudspeakers in combination with subwoofer and Hi-Z ceiling mount loudspeakers. With dynamic routing, an analog signal can be easily share via Dante to other amplifiers.

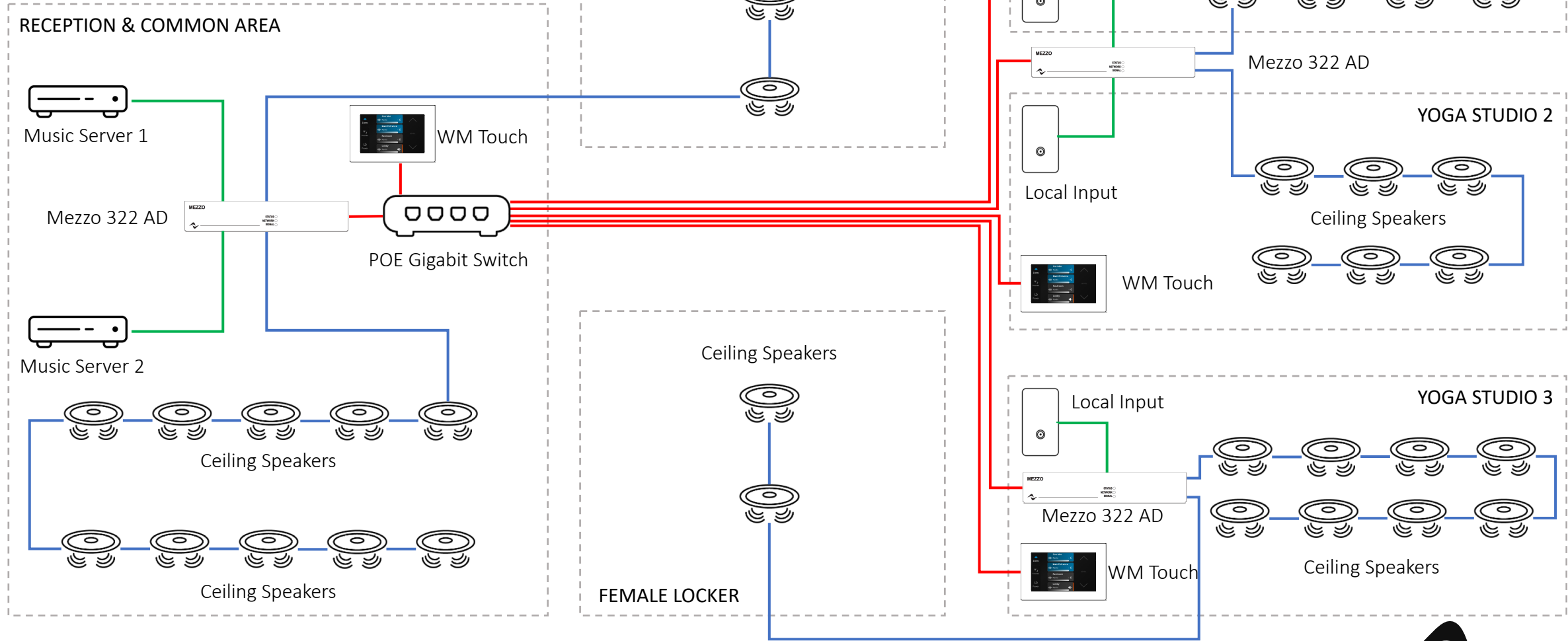
Key Features

- Full power sharing allow for flexible use of sub-woofer, full range and high impedance loudspeakers
- Dynamic routing capability embedded on amplifiers
- Dynamic music distribution for easy and flexible deployment
- Equipment can easily be placed in the store elements without the need for a dedicated rack.
- Dynamic routing enable an analog input on one amplifier to be routed to other amplifiers.
- Multiple WM Touch can be used as individual zone control or as a master control.



YOGA STUDIO

WM TOUCH SOLUTION



YOGA STUDIO

WM TOUCH SOLUTION

Mezzo 322AD



Output Stage	322 A/AD	
Max. output power		symmetric a-sym.
	per channel @ 100 V	160 W 320 W
	per channel @ 70 V	160 W 320 W
	per channel @ 16 Ω	160 W 320 W
	per channel @ 8 Ω	160 W 320 W
	per channel @ 4 Ω	160 W 320 W

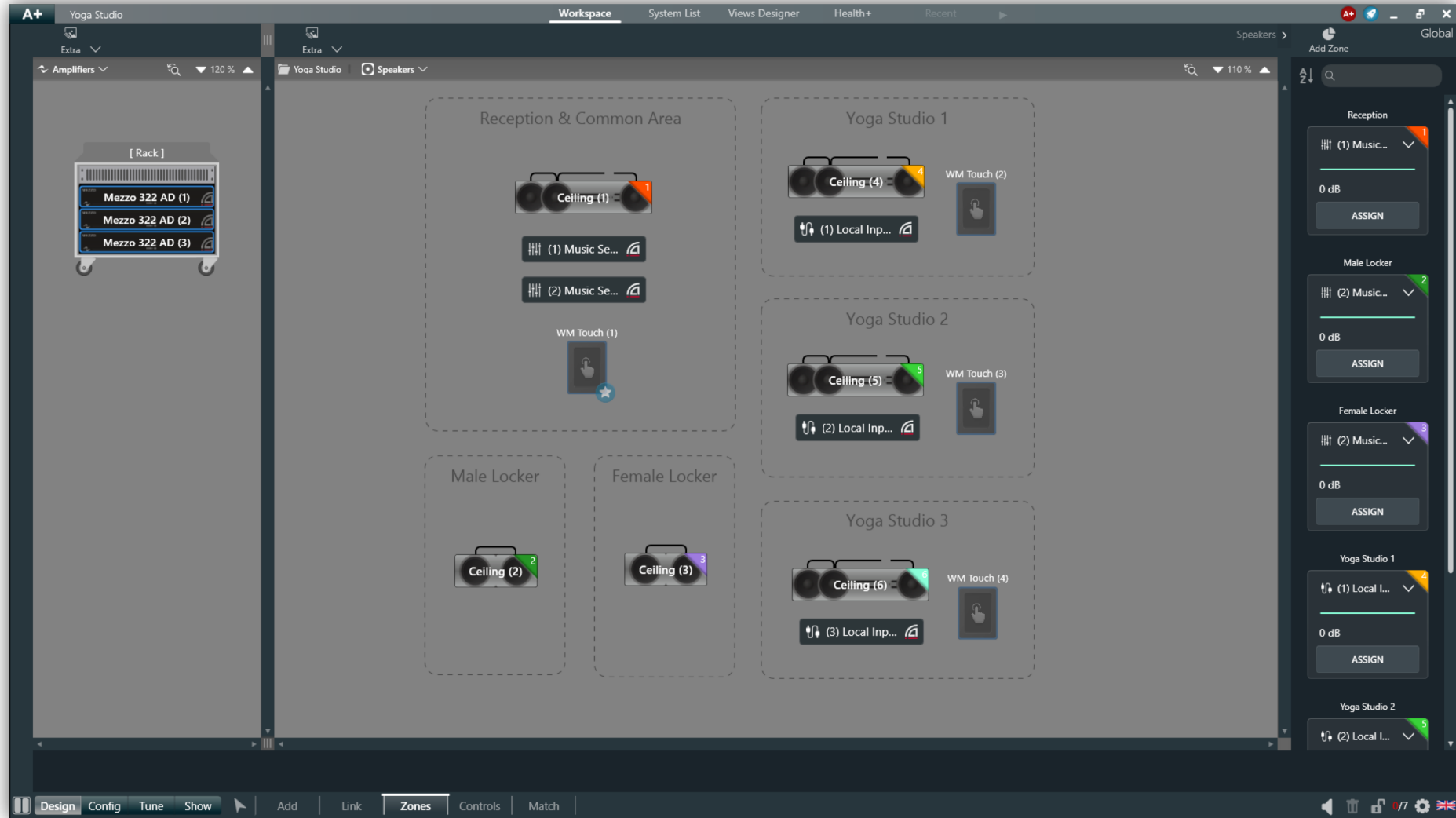
WM Touch



Technical Specifications	
Dimensions	L: 127.4 mm x H: 86.4mm x D:14.4 mm
LCD Screen	4.3 Inch
Aspect Ratio	16:9 (W:H)
Mounting Option	Wall Mount
Orientation	Landscape or portrait
Power Supply (not included)	PoE Injector or PoE Switch



YOGA STUDIO WM TOUCH SOLUTION



YOGA STUDIO WM TOUCH SOLUTION

The screenshot displays the Yoga Studio software interface. A 'PROJECT PROPERTIES' dialog box is open, showing a table of device configurations. The background shows a speaker layout for 'Reception & Common Area' and 'Yoga Studio 1'.

PREFERRED	NAME AND STATUS	LOCATION	ACTIONS
<input type="checkbox"/>	WM Touch (4) • VIRTUAL	Speakers	⊕ ⊖
<input type="checkbox"/>	WM Touch (3) • VIRTUAL	Speakers	⊕ ⊖
<input type="checkbox"/>	WM Touch (2) • VIRTUAL	Speakers	⊕ ⊖
<input checked="" type="checkbox"/>	WM Touch (1) • VIRTUAL	Speakers	⊕ ⊖
<input type="checkbox"/>	PC MBP-TT-WIN • AVAILABLE	This PC	⊕ ⊖

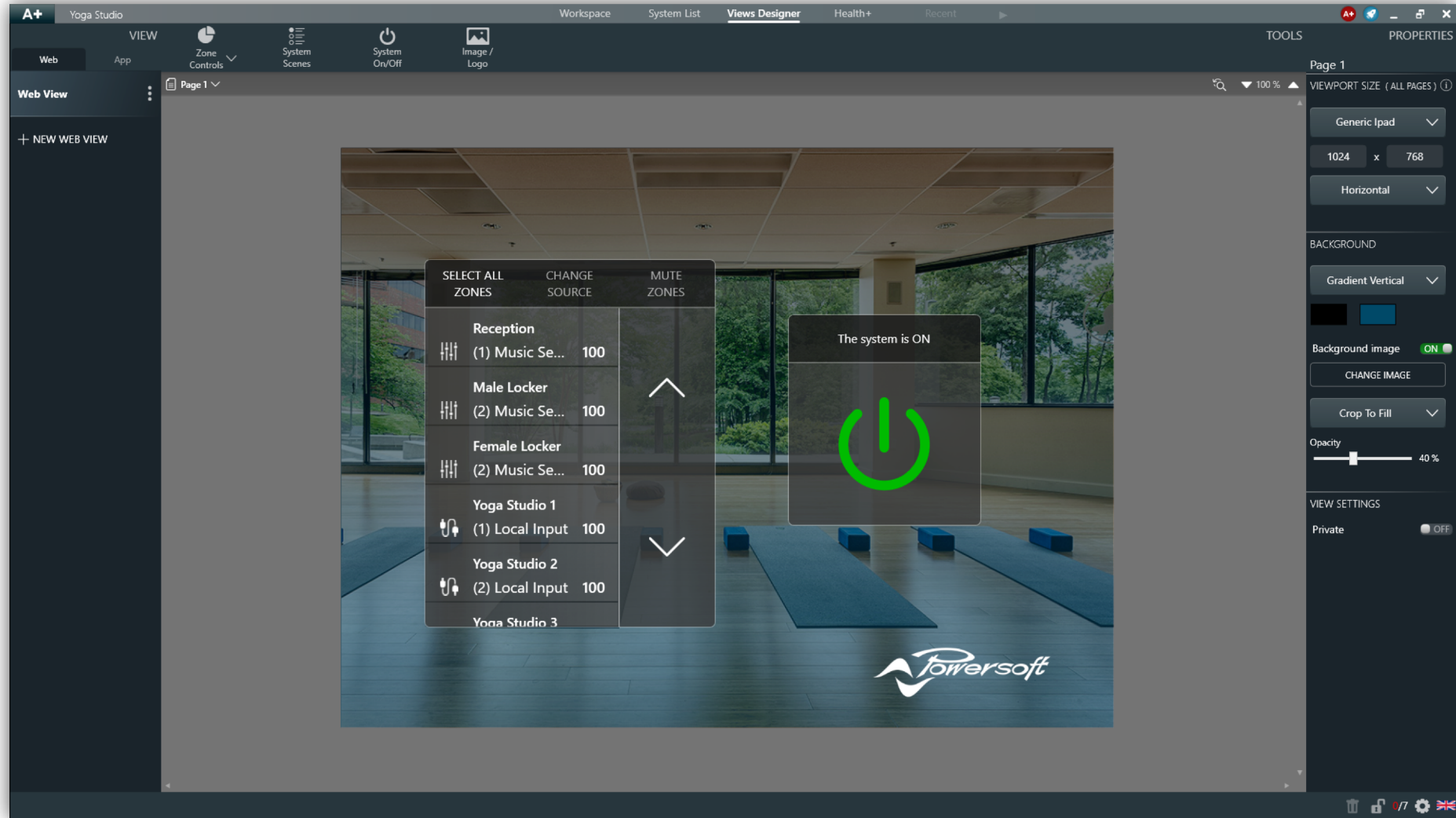
PROJECT PROPERTIES

- PROJECT DETAILS
- VIEWS HOST
- SUPPORT

DONE CANCEL



YOGA STUDIO WM TOUCH SOLUTION



BAR & RESTAURANT

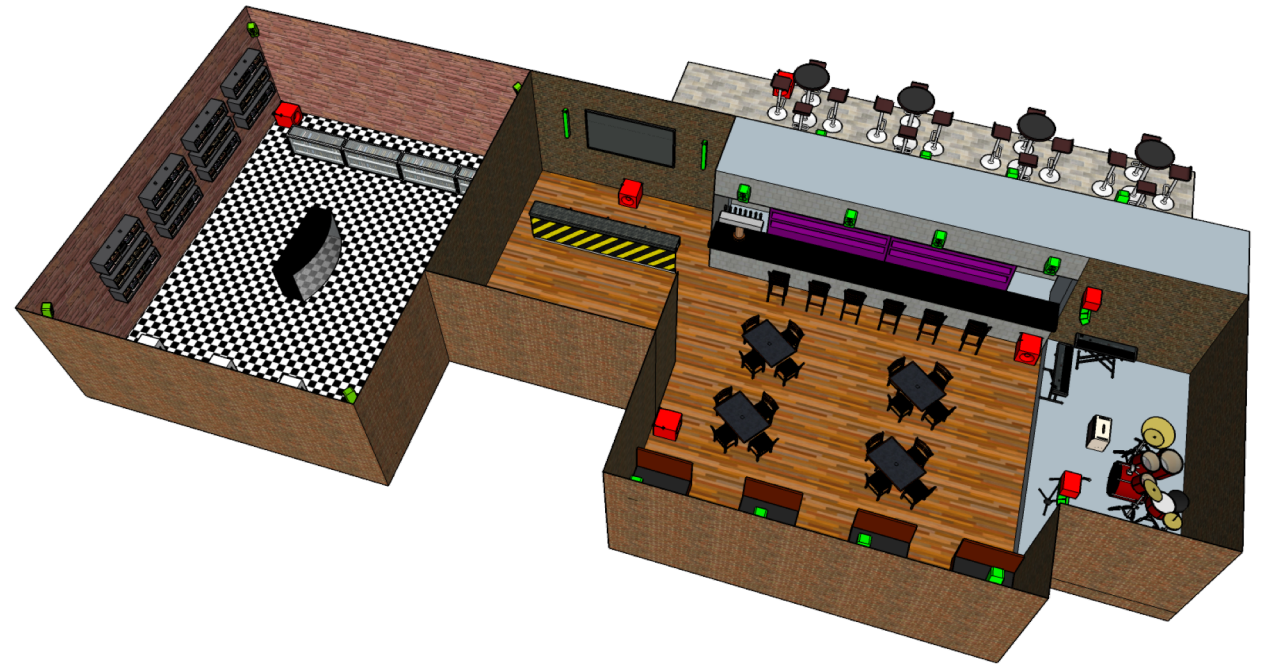
WM TOUCH SOLUTION

System Overview

In this bar & restaurant dedicated BGM/FGM audio systems are in place for the gift store, reception and cashier area, stage, indoor and outdoor dining area. Dynamic Music Distribution allows to play any of the selected background/foreground music sources by using the source selection offered in the system. This system allows for flexible power sharing to FR loudspeakers in combination with. With dynamic routing, an analog signal can be easily share via Dante to a other amplifiers.

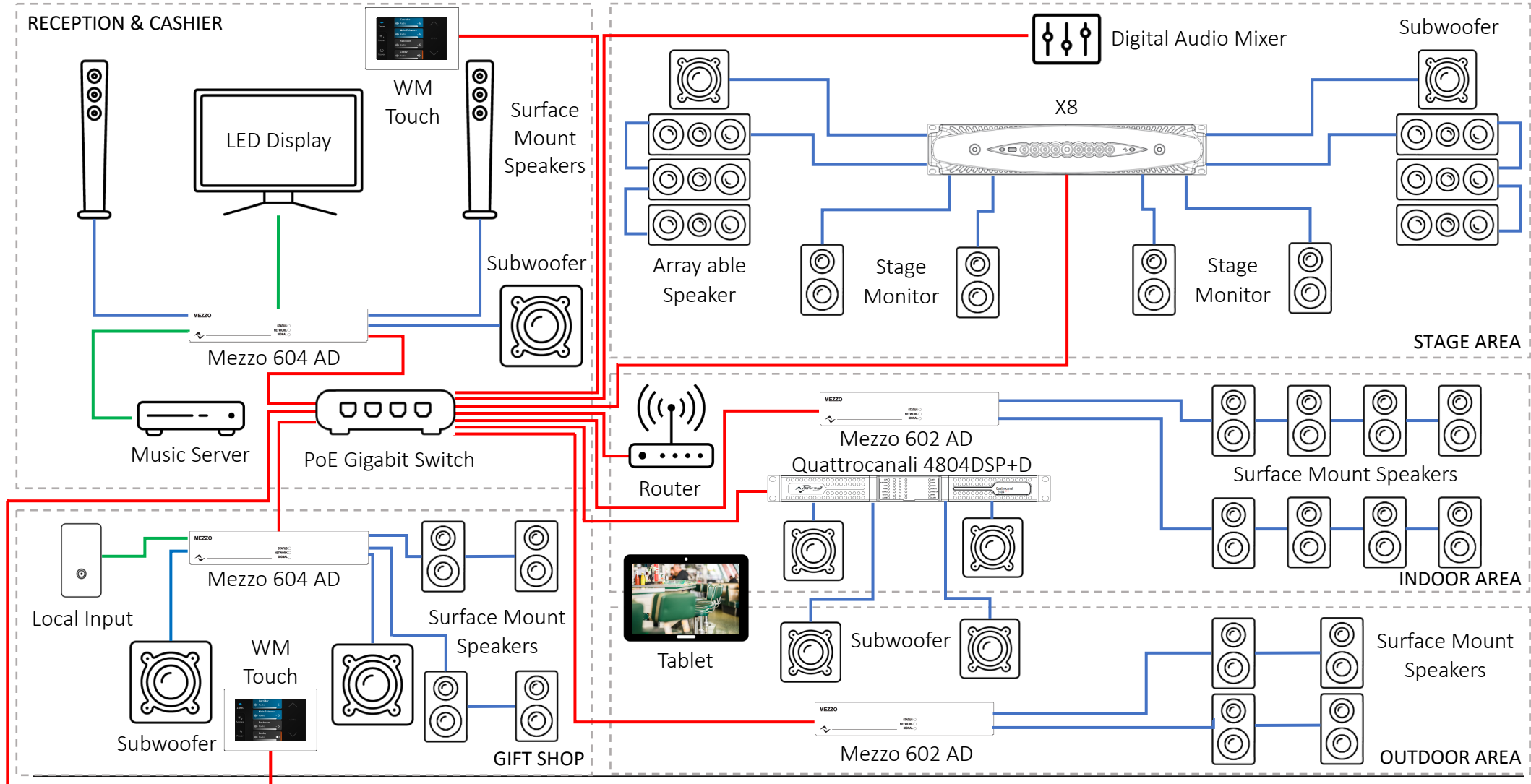
Key Features

- Full power sharing allow for flexible use of sub-woofer, full range and high impendence loudspeakers
- Dynamic routing capability embedded on amplifiers
- Dynamic music distribution for easy and flexible deployment
- Dynamic routing enable an analog input on one amplifier to be routed to other amplifiers.
- Multiple WM Touch can be used as individual zone control or as a master control.
- WM Touch can act as a Views Host for Web views or App Sys Control.



BAR & RESTAURANT

WM TOUCH SOLUTION



BAR & RESTAURANT

WM TOUCH SOLUTION

Mezzo 604AD



Output Stage	604 A/AD	
Max. output power	symmetric	a-sym.
	per channel @ 100 V	125 W 500 W
	per channel @ 70 V	150 W 600 W
	per channel @ 16 Ω	150 W 600 W
	per channel @ 8 Ω	150 W 600 W
	per channel @ 4 Ω	150 W 400 W

Mezzo 602AD



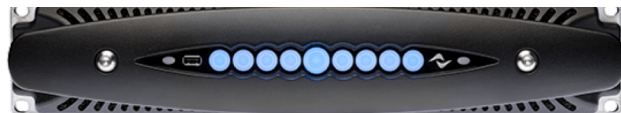
Output Stage	602 A/AD	
Max. output power	symmetric	a-sym.
	per channel @ 100 V	250 W 500 W
	per channel @ 70 V	300 W 600 W
	per channel @ 16 Ω	300 W 600 W
	per channel @ 8 Ω	300 W 600 W
	per channel @ 4 Ω	300 W 400 W

WM Touch



Technical Specifications	
Dimensions	L: 127.4 mm x H: 86.4mm x D:14.4 mm
LCD Screen	4.3 Inch
Aspect Ratio	16:9 (W:H)
Mounting Option	Wall Mount
Orientation	Landscape or portrait
Power Supply (not included)	PoE Injector or PoE Switch

X8



Output Stage	X8	
Max. output power	per channel @ 8 Ω	1600 W
	per channel @ 4 Ω	3000 W
	per channel @ 2.7 Ω	4000 W
	per channel @ 2 Ω	5200 W

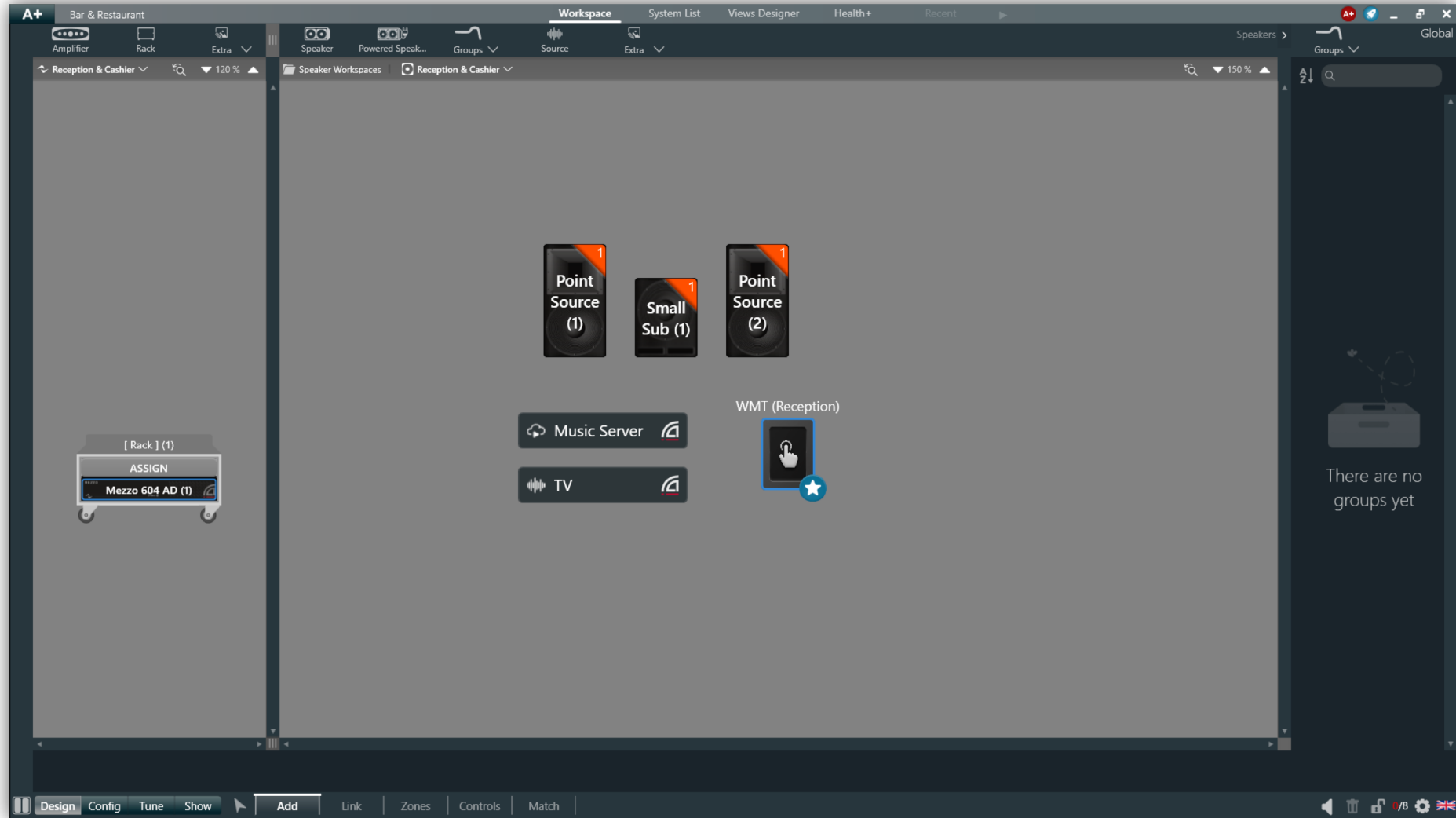
Quattrocanali 4804 DSP+D



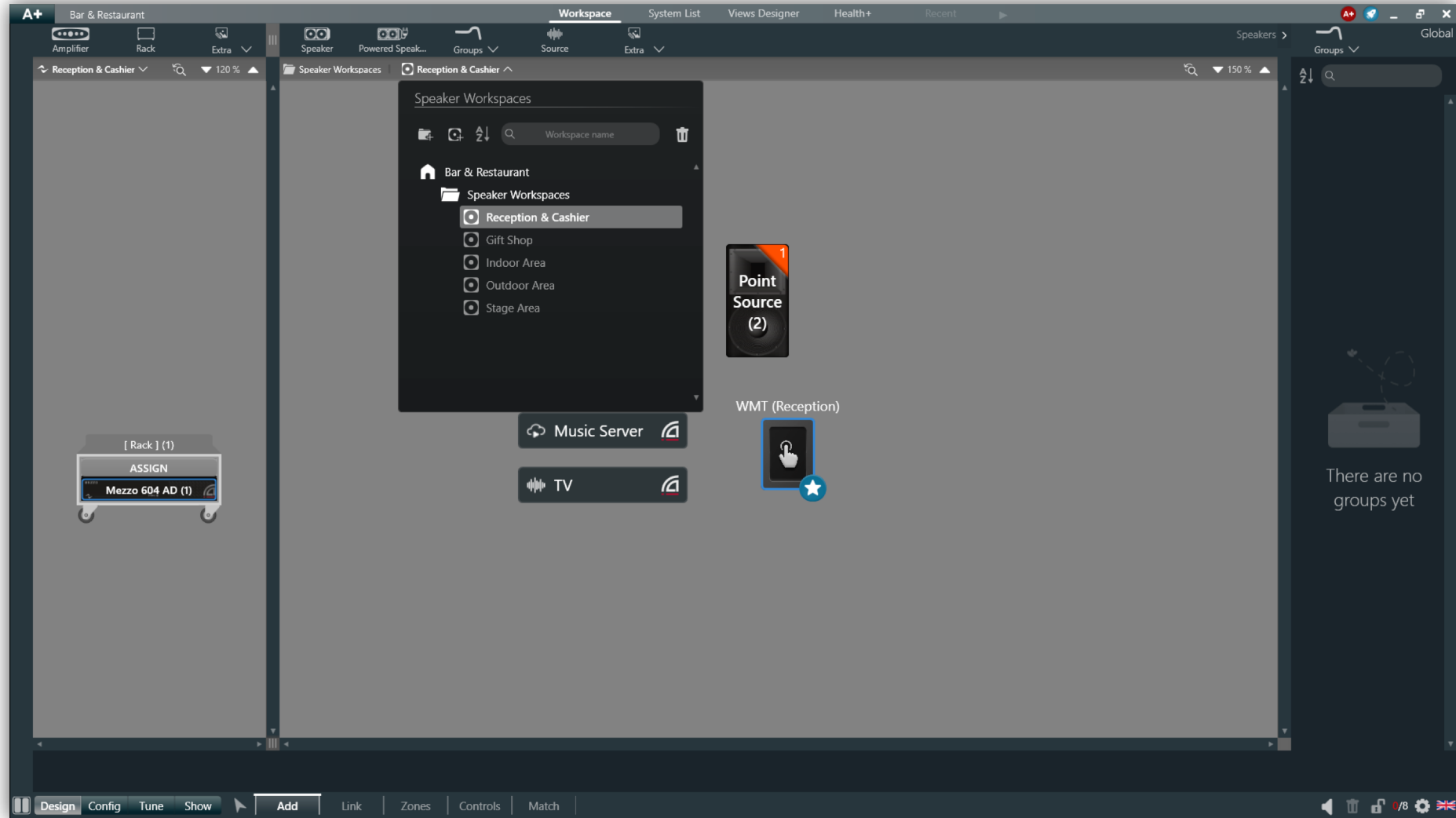
Output Stage	Quattrocanali 4804 DSP+D	
Max. output power	symmetric	a-sym.
	per channel @ 100 V	1.200 W 2.200 W
	per channel @ 70 V	1.200 W 1.600 W
	per channel @ 8 Ω	1.200 W 1.200 W
	per channel @ 4 Ω	1.200 W 2.200 W
	per channel @ 2 Ω	1.500 W 1.600 W



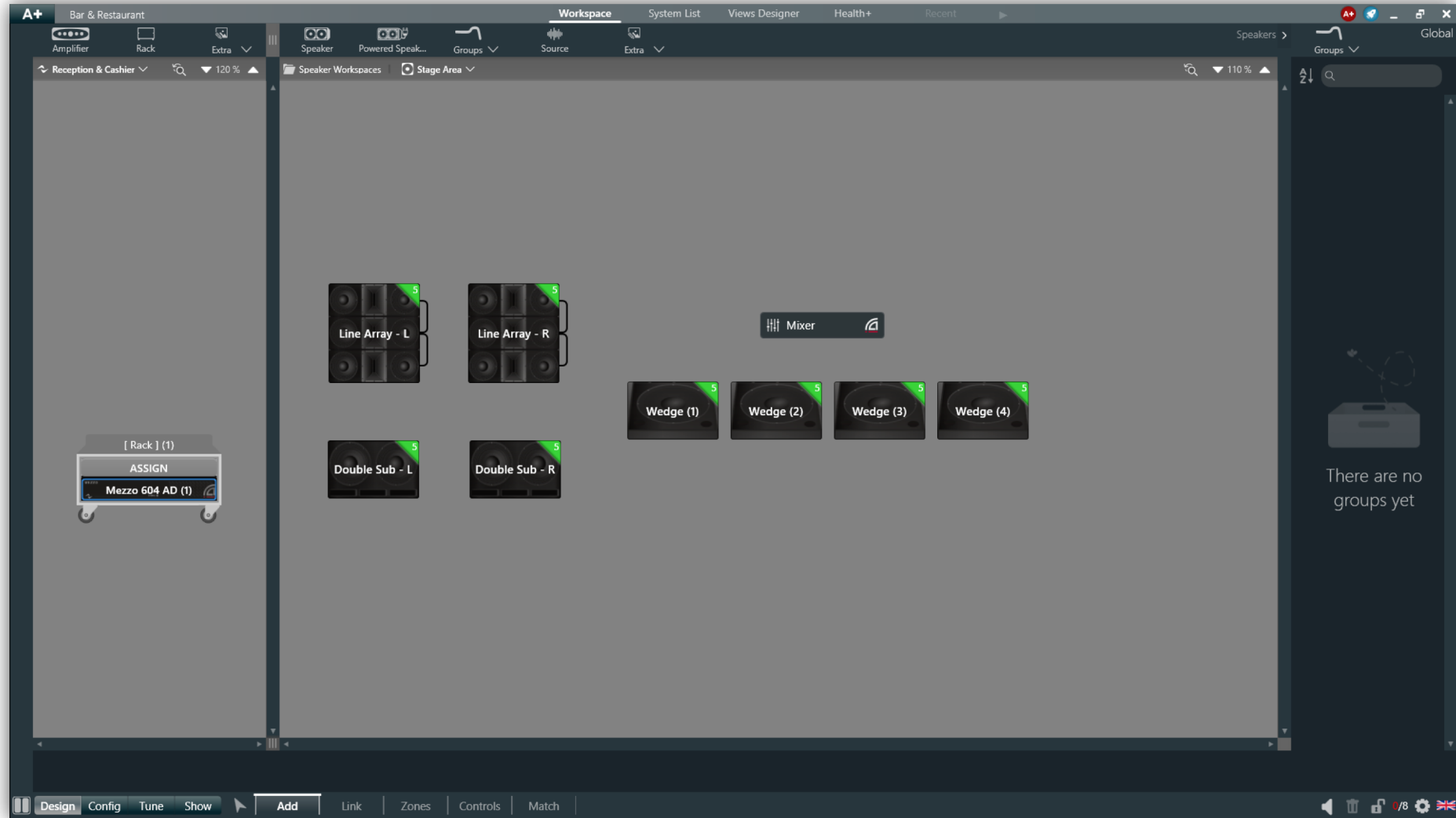
BAR & RESTAURANT WM TOUCH SOLUTION



BAR & RESTAURANT WM TOUCH SOLUTION



BAR & RESTAURANT WM TOUCH SOLUTION



BAR & RESTAURANT WM TOUCH SOLUTION



DESIGN CONSIDERATIONS



ZONE MANAGEMENT



MEZZO 322 A/AD

MEZZO 602 A/AD

2 ZONES/ 2 DANTE FLOWS

MEZZO 324 A/AD

MEZZO 604 A/AD

2 ZONES/ 2 DANTE FLOWS



ZONE MANAGEMENT

INSTALL AMPLIFIERS

Ottocanali

4 ZONES



Quattrocanali

2 ZONES

Duecanali

1 ZONE

TOURING AMPLIFIERS

X8

4 ZONES

X4

2 ZONES



T*04

2 ZONES

T*02

1 ZONE



ZONE MANAGEMENT



AMPLIFIER SERIES	DANTE CARD	DANTE PORTS	DANTE INPUT	DANTE OUTPUT	DANTE FLOWS	SWITCHED MODE	SPLIT MODE	REDUNDANT MODE
X Series	Brooklyn II	2	16	8	32	✓	✓	✓
T Series	Ultimo XT	2	4	4	2	✓		
Mezzo AD	Ultimo XT	2	4	4	2	✓	✓	
Ottocanali DSP+D	Brooklyn II	2	16	8	32	✓	✓	✓
Quattrocanali DSP+D	Ultimo XT	1	4	-	2		✓	
Duecanali DSP+D	Ultimo XT	1	2	-	2		✓	



CONTACT

Powersoft Support Audio

Application Engineering Team

Email

support.audio@powersoft.com

Phone

+39 055 7350230

HQ Italy

Via E. Conti, 5 – 50018 Scandicci (FI), Italy

Website

powersoft.com





THANK YOU FOR YOUR ATTENTION

The information contained in these documents is confidential and only for the information of the intended recipient and may not be used, published or redistributed without the prior written consent of Powersoft S.p.A. All forecasts included in this document are subject to risks and uncertainties of Powersoft itself and of markets. All forecasts are based on currently available information and reflect our management expectations. All forecasts reflect market parameters, assumptions and other fundamentals which could change and therefore influence the future results. All the forecasts are based on an hypothesis of organic growth and commercial and regulatory stability.